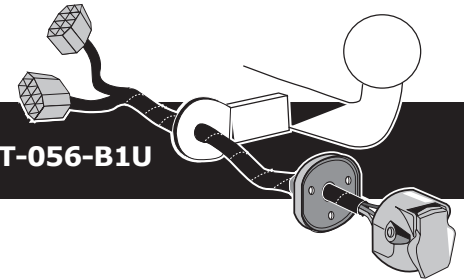


Citroën Berlingo 06/2015-
Peugeot Partner 06/2015-

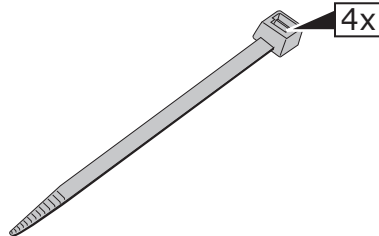
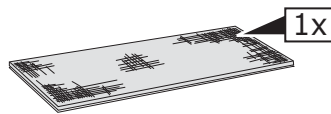
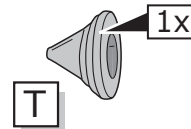
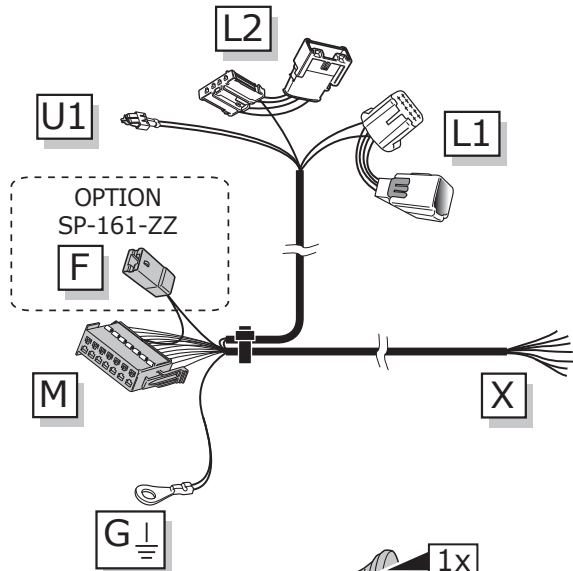
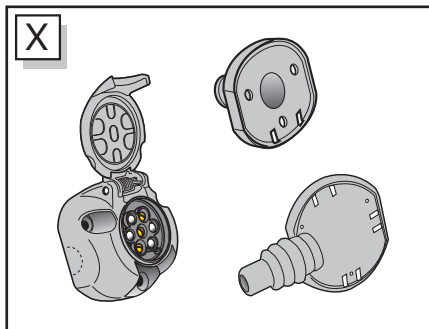
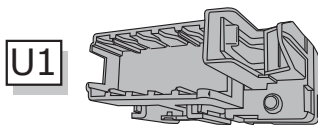
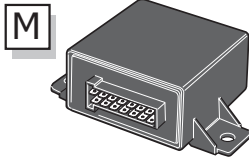
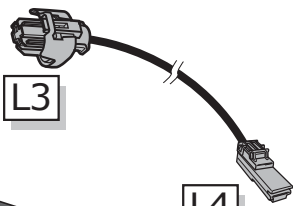
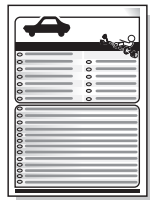
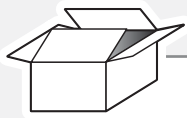
Partnr.: CT-056-B1U



- Fitting instructions electric wiring kit tow bar with 12-N socket up to DIN/ISO Norm 1724.
- We would expressly point out that assembly not carried out properly by a competent installer will result in cancellation of any right to damage compensation, in particular those arising by virtue of the product liability act.
- Contents of these kits and their fitting manuals are subject to alteration without notice, please ensure that these instructions are read and fully understood before commencing installation.
- Do not overload circuits; the maximum loads per connection are detailed in this manual.
- Attention! Before Installation, please read this manual carefully and inform your customer to consult the vehicle owners manual to check for any vehicle modifications required before towing.
- In the event of functional problems, troubleshooting must be limited to about 0.5 hours, contact the technical support:
ukts@ecs-electronics.com / 07440 202 052.



Part list

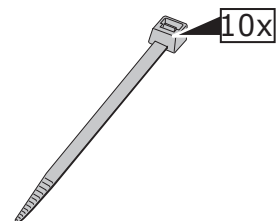
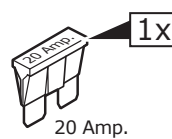
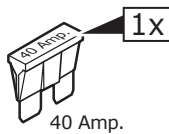
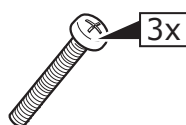


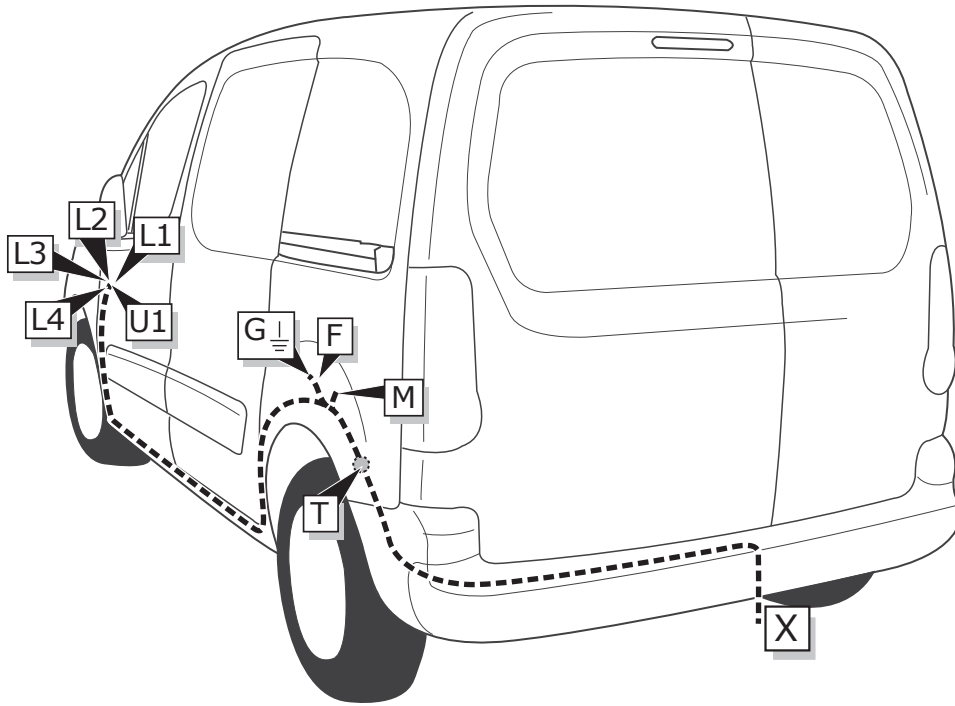
UN-243-YZ
Optional reverse lamp pre-wire extension included

Pag. 13

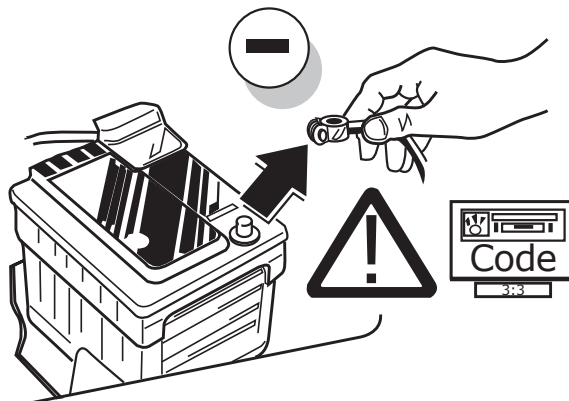
Option SP-161-ZZ: Fog off extension harness

Pag. 11

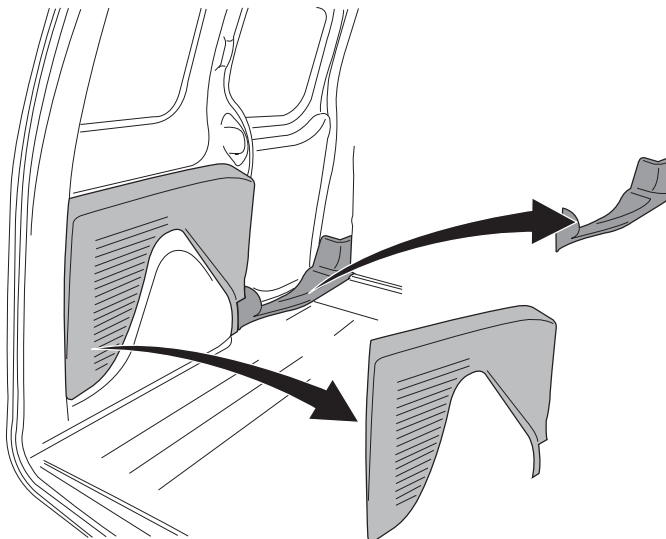
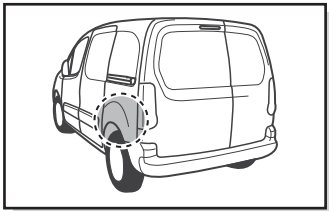




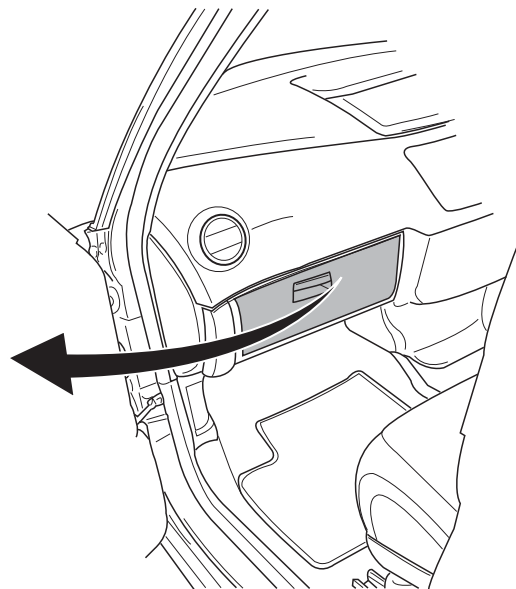
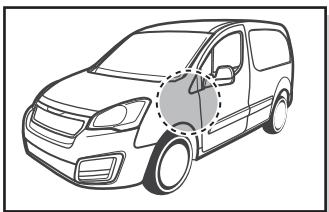
1



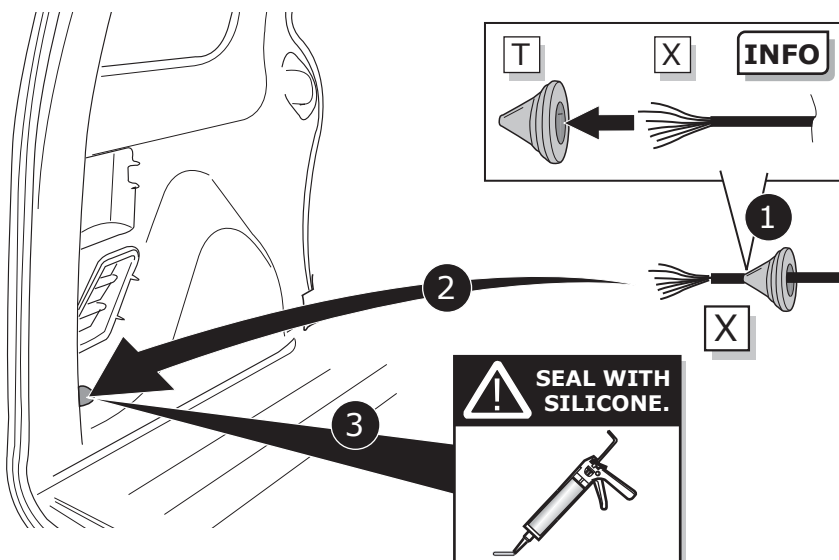
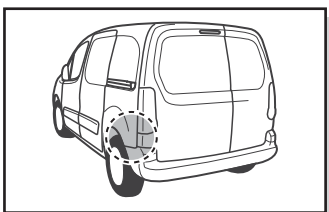
2

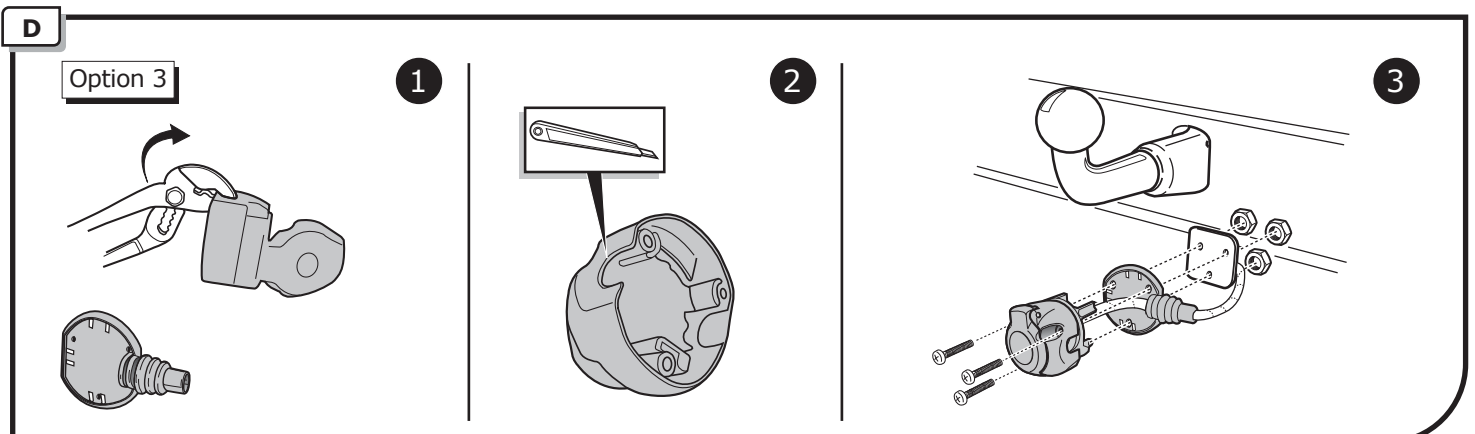
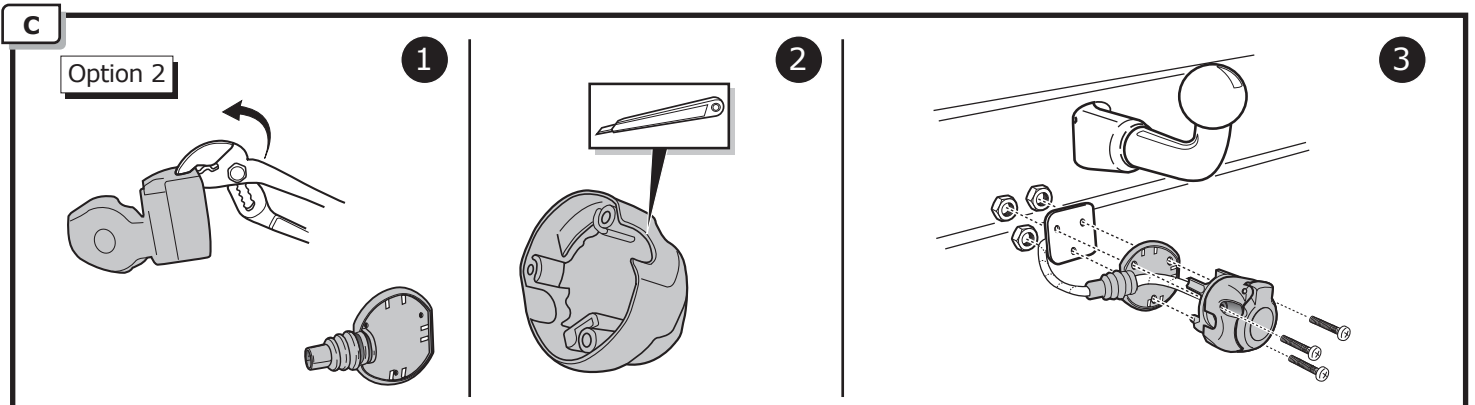
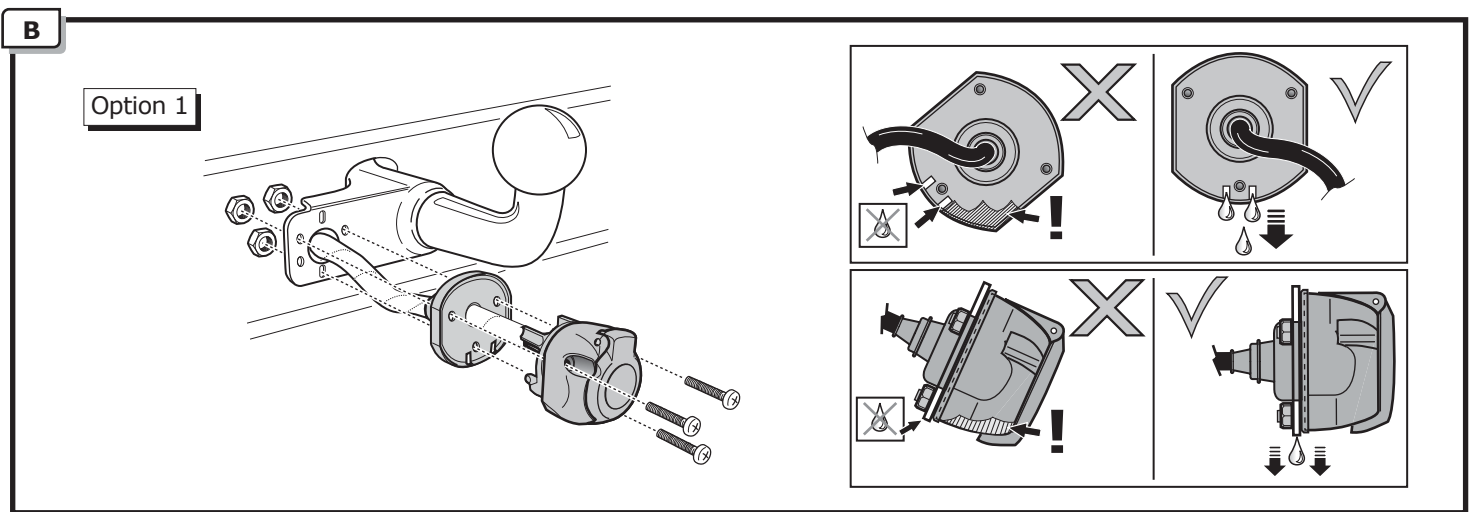
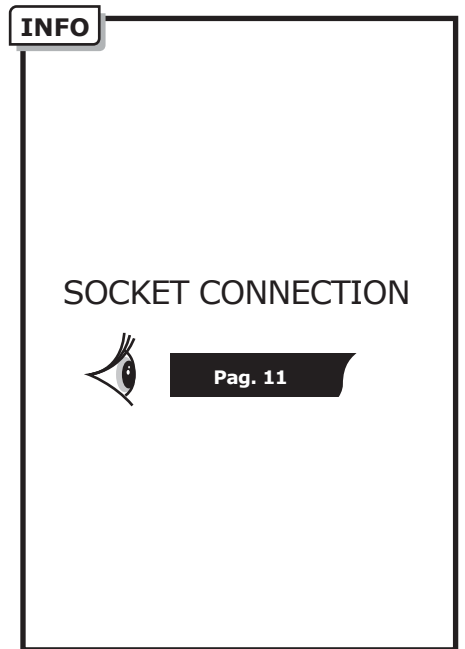
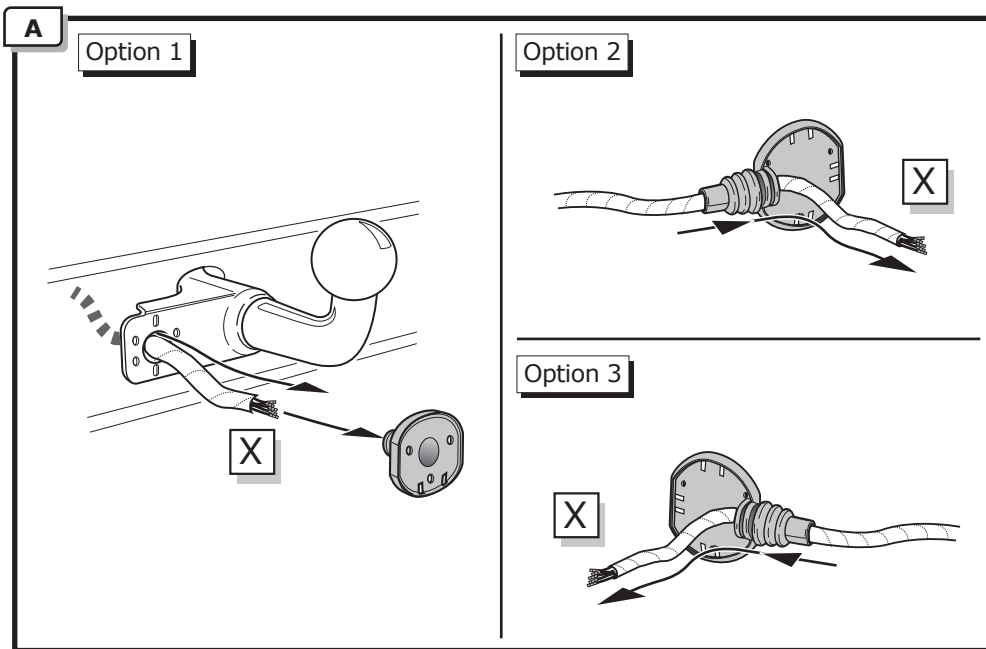


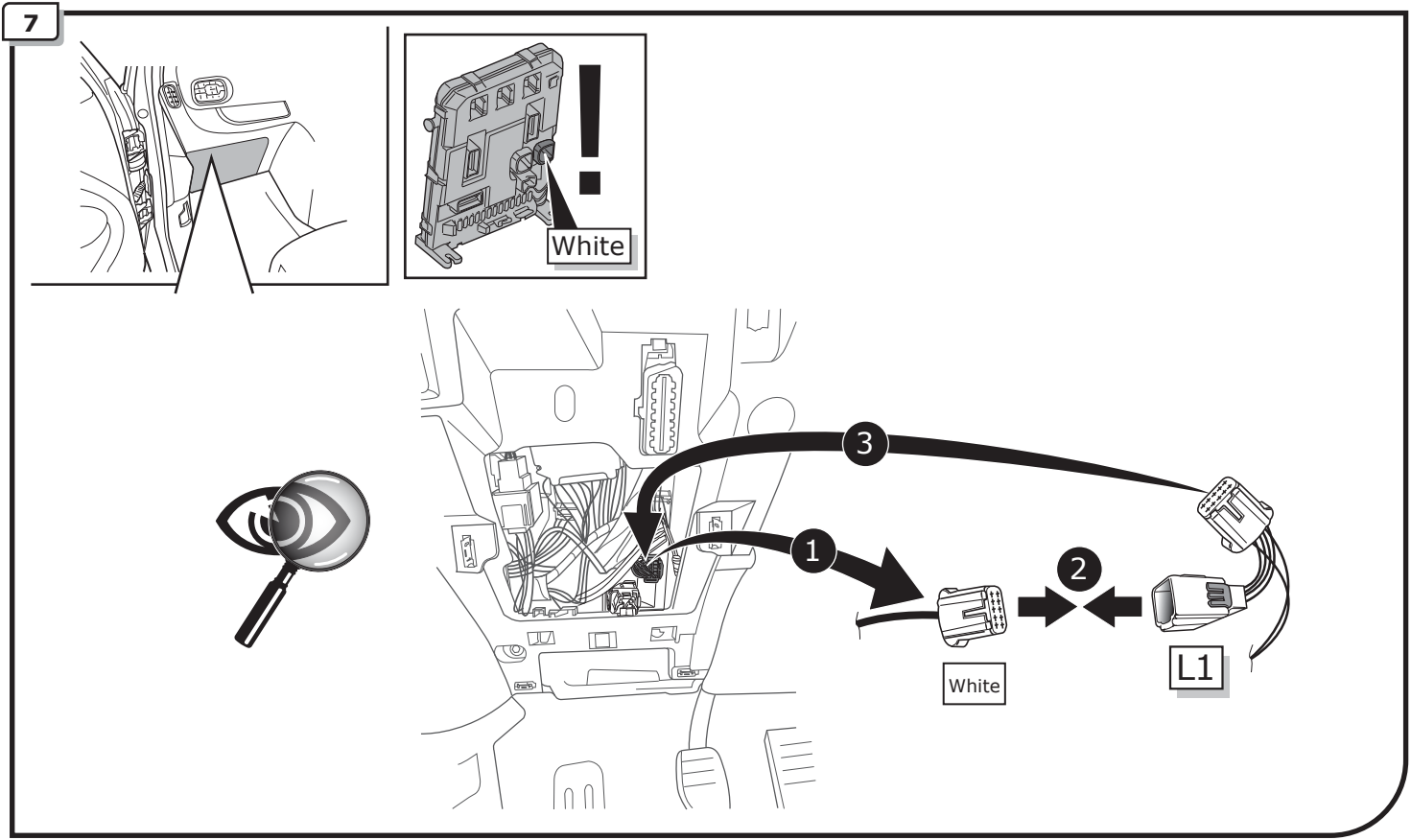
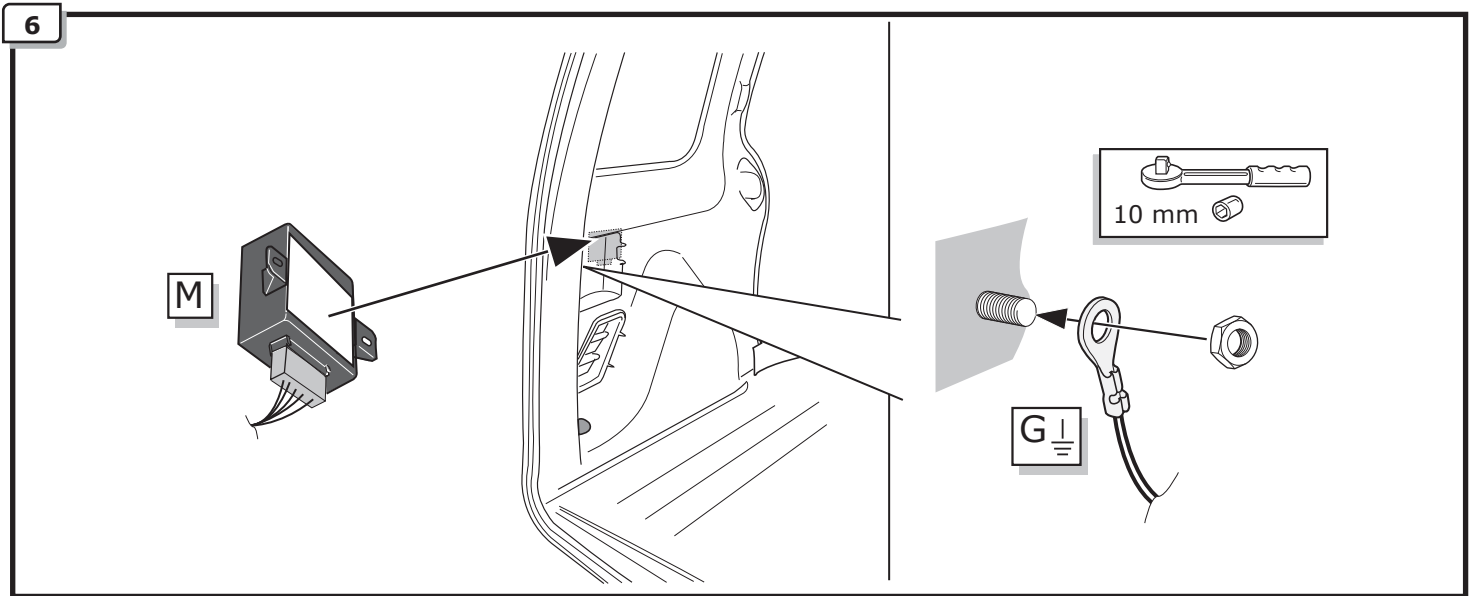
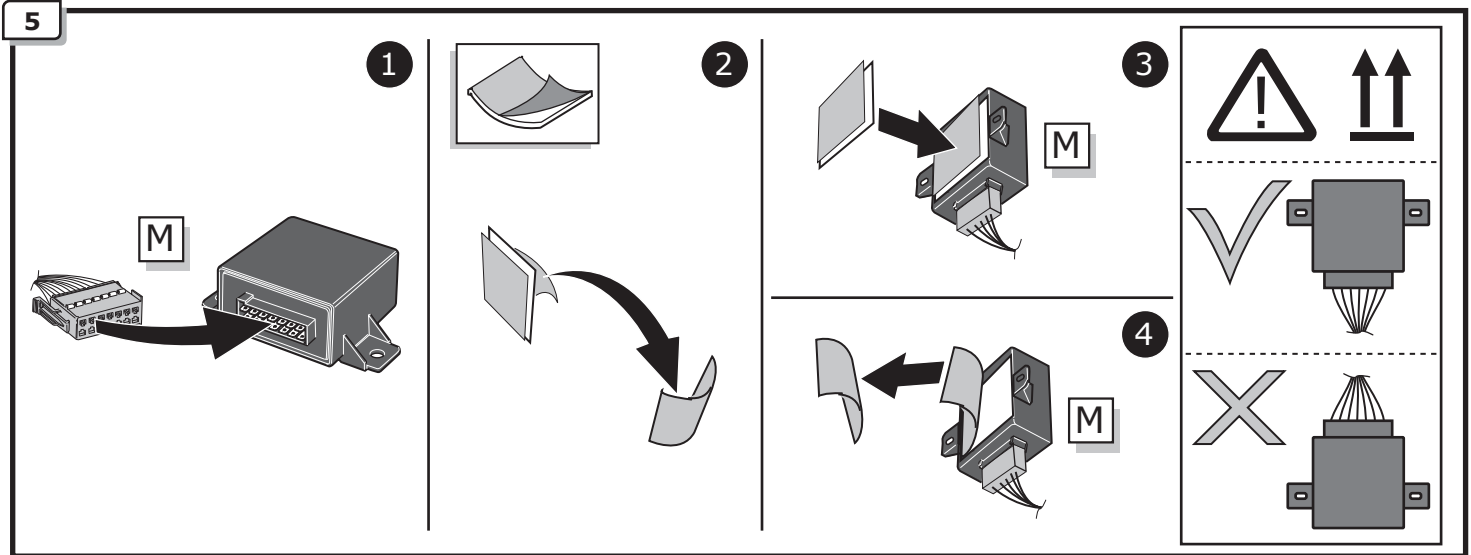
3



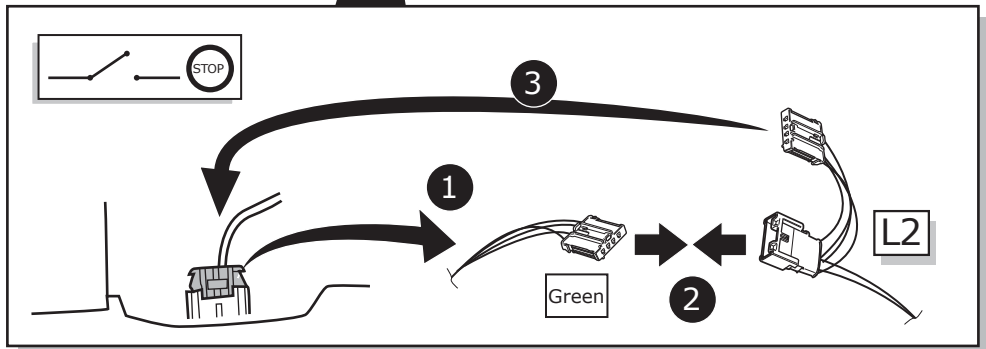
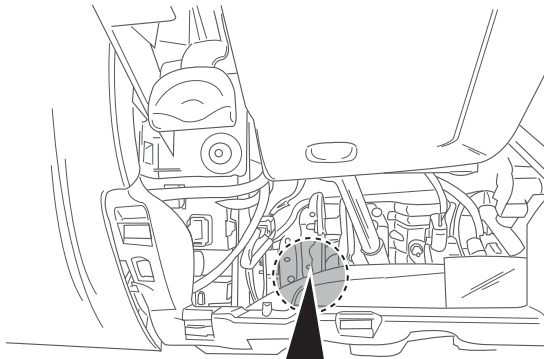
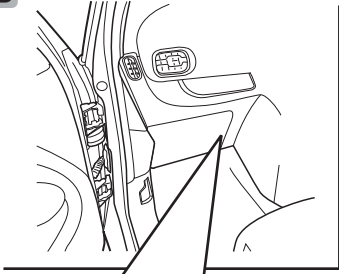
4



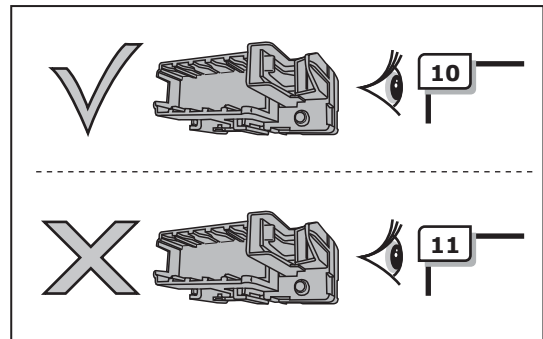
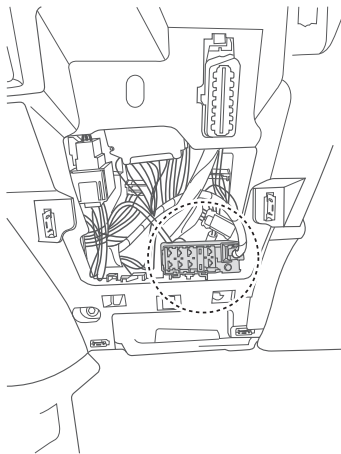
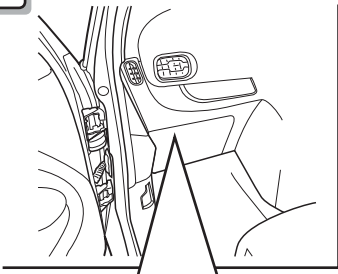


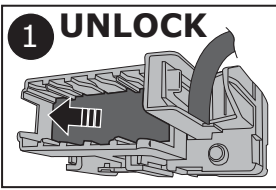
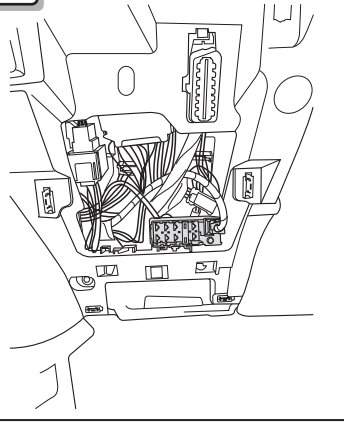


8

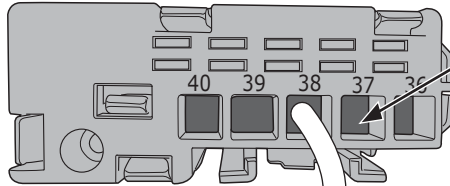


9

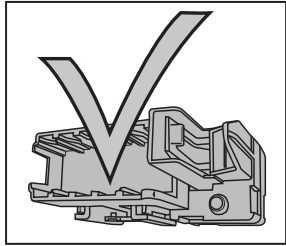




! Choose free position



Orange +30

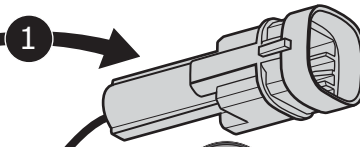
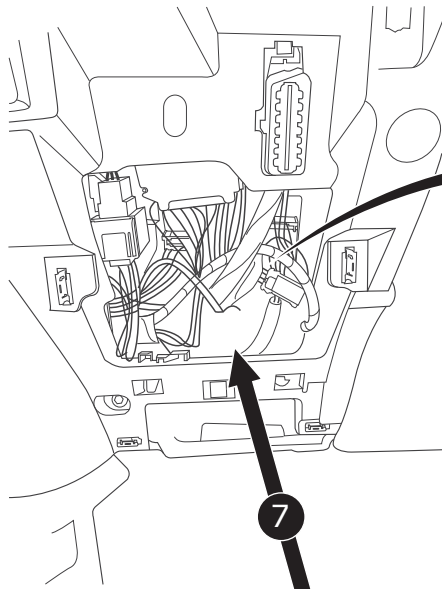
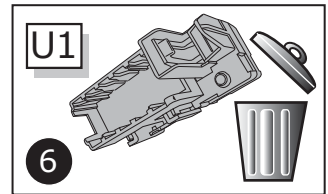
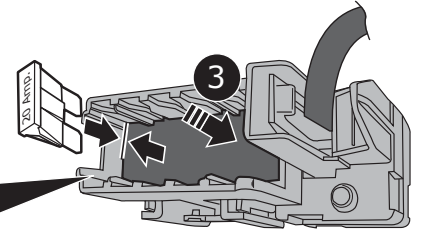


Position

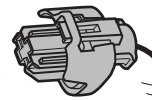
4 20 Amp.

5

User guide.



L3

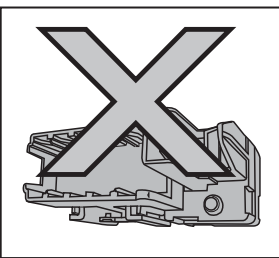
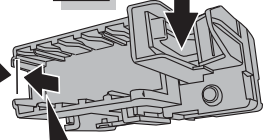


2

L4

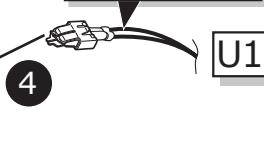
3

U1



U1

Orange +30



4

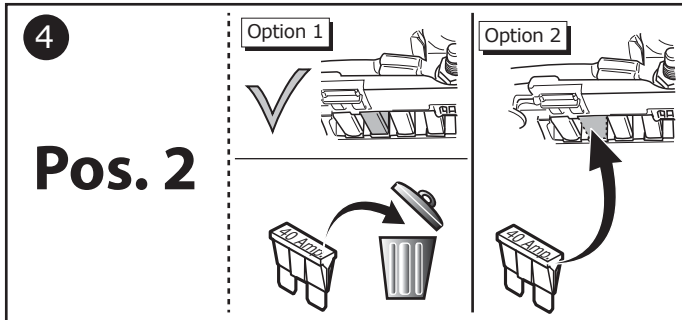
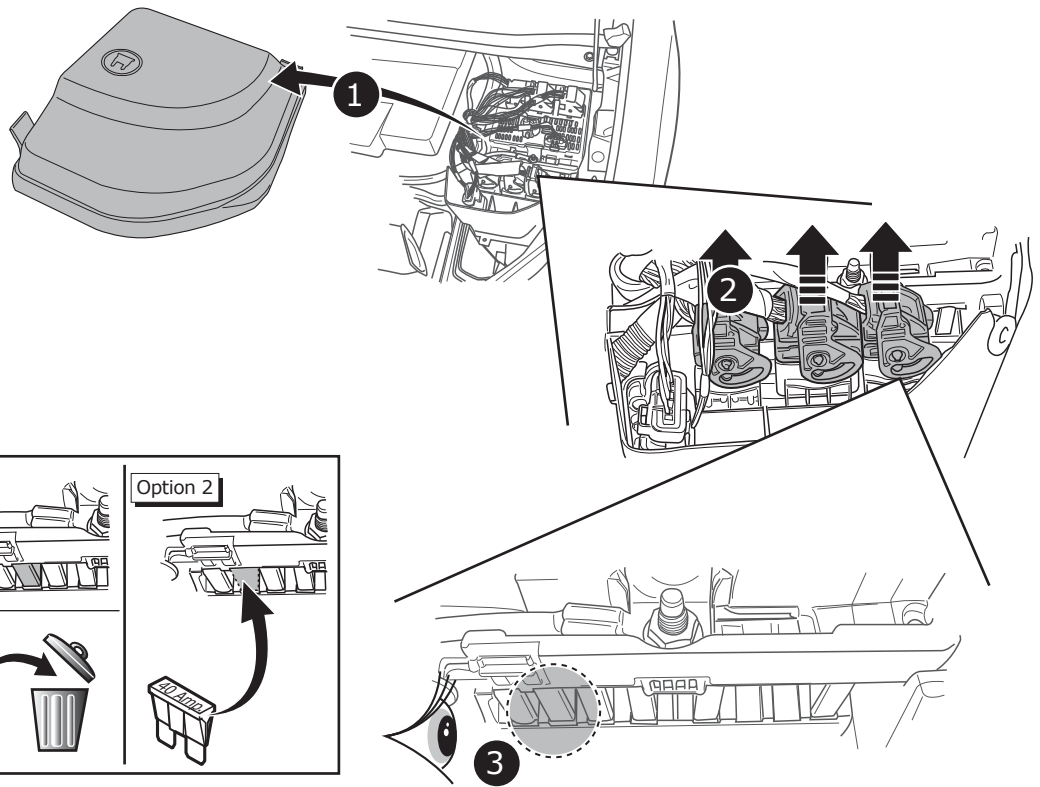
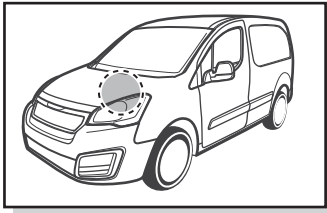
Position

6

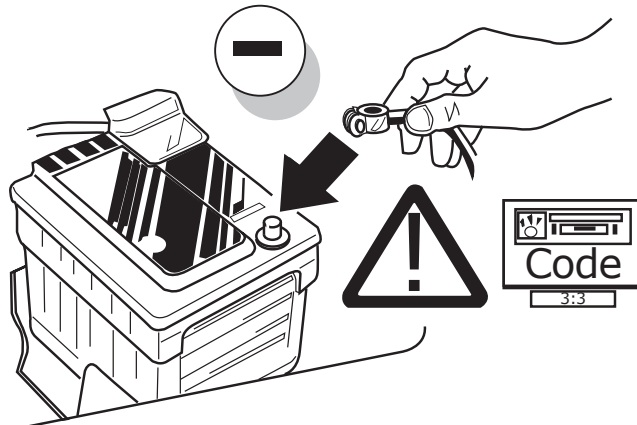
User guide.

5 20 Amp.

12



13



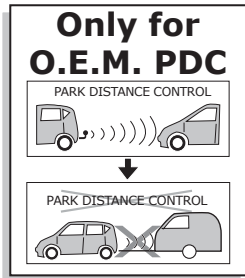
14

TEST ALL THE CIRCUITS WITH A TEST DEVICE WITH THE CORRECT POWER LOAD FOR EACH FUNCTION. A TEST DEVICE WITH LED'S CANNOT BE USED FOR THIS PURPOSE.

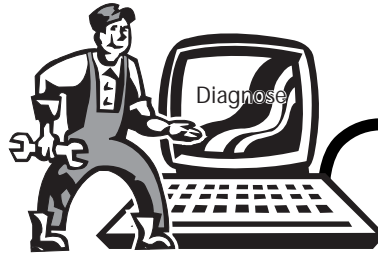
INFO

REINSTALL TRIM.

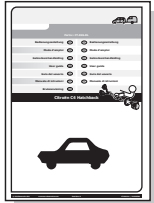
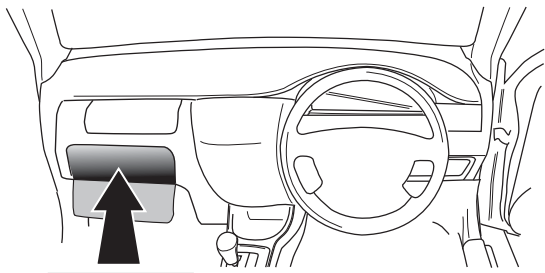
INFO



C2



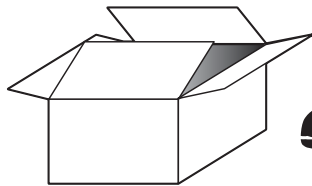
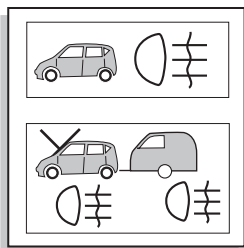
15



User guide

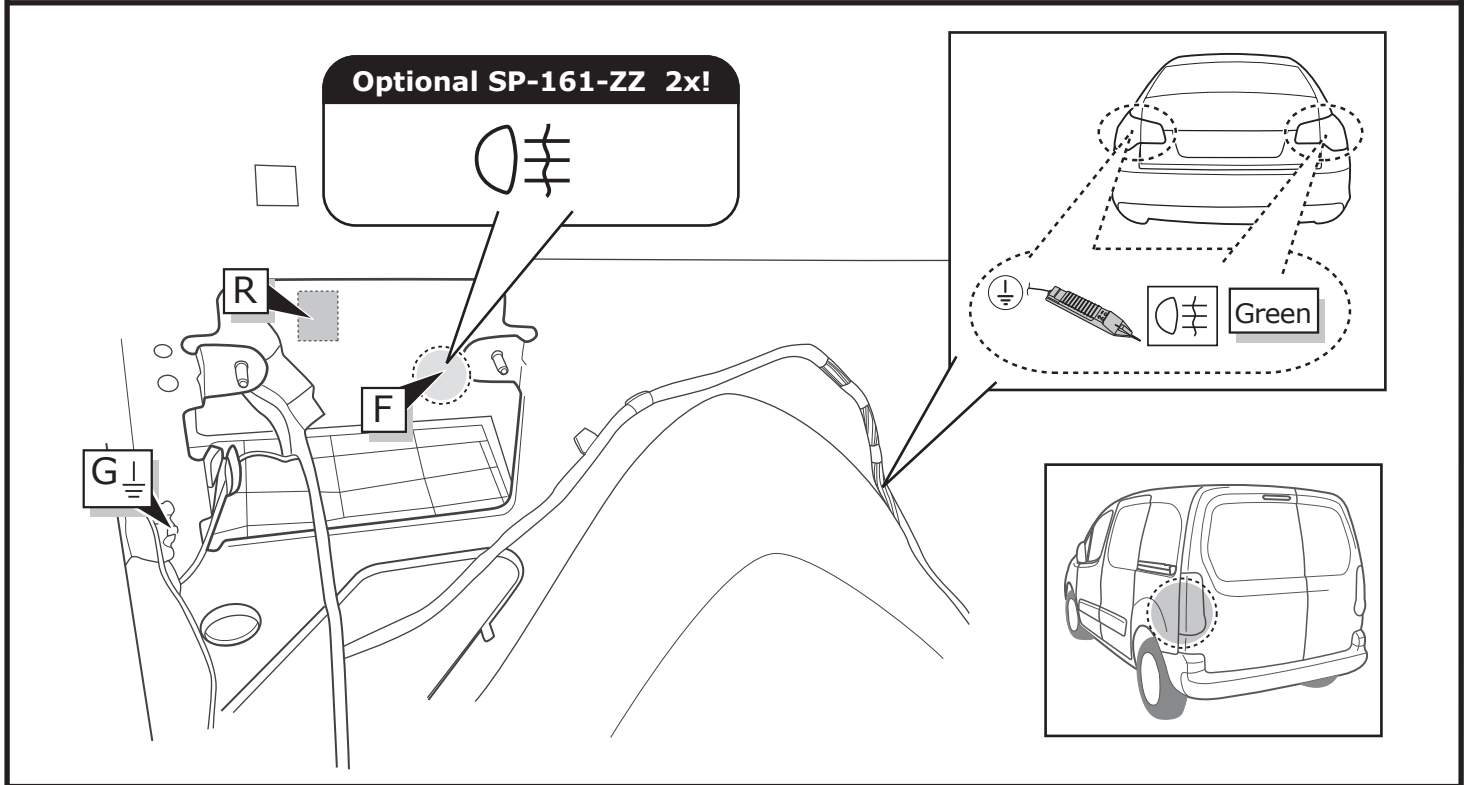


OPTION



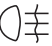



Consult your supplier.

SP-161-ZZ

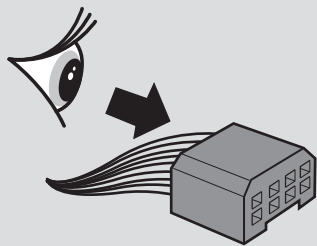


INFO

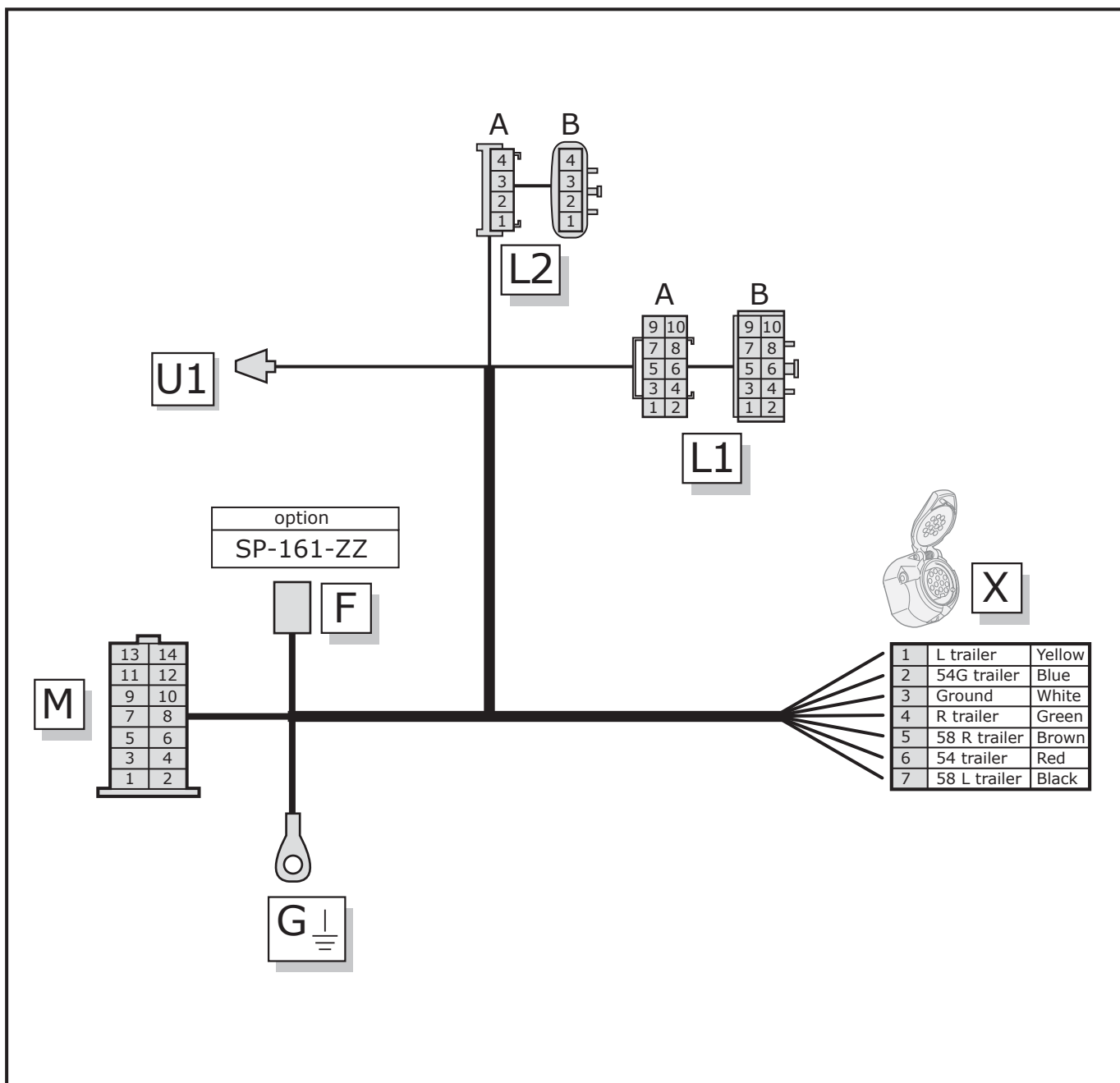
SOCKET CONNECTION

DIN/ISO 1724	←	🚗 	⏚ 1-7	→			
	1/L	2	3/31	4/R	5/58-R	6/54	7/58-L
Pmax	21W	21W		21W	42W	3x21W	42W
Colour	Yellow	Blue	White	Green	Brown	Red	Black

INFO POWER SCHEDULE CT-056-B1U

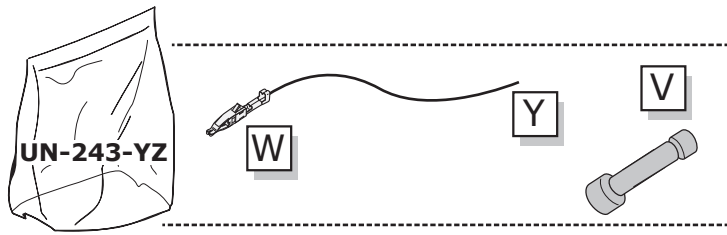


L	←	54	STOP
R	→	54G	⚡
58L	⚡	BU	⚡
58R	⚡	Ground/31	⚡

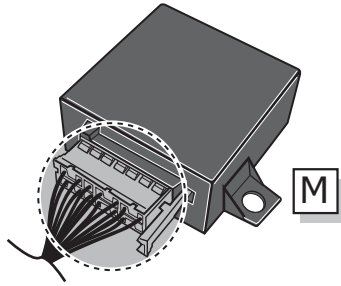


UN-243-YZ Reverse lamp pre-wire extension

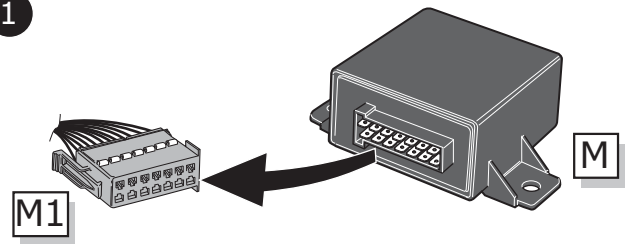
⚠ MAX = 21W



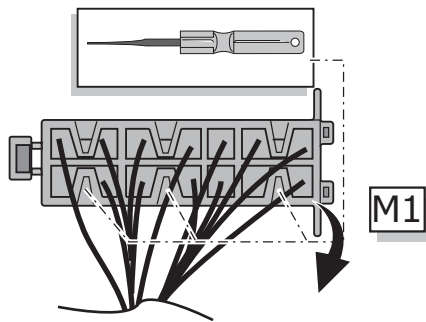
A



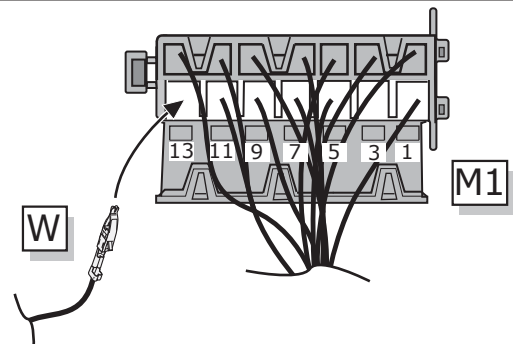
1



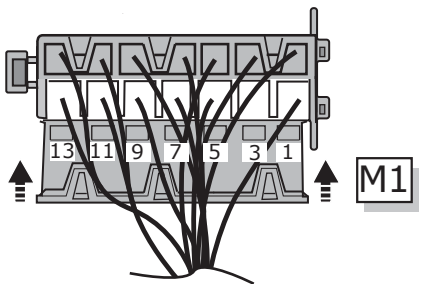
2



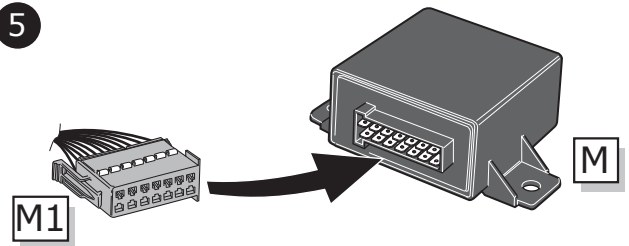
3



4



5



B

⚠ MAX = 21W

