

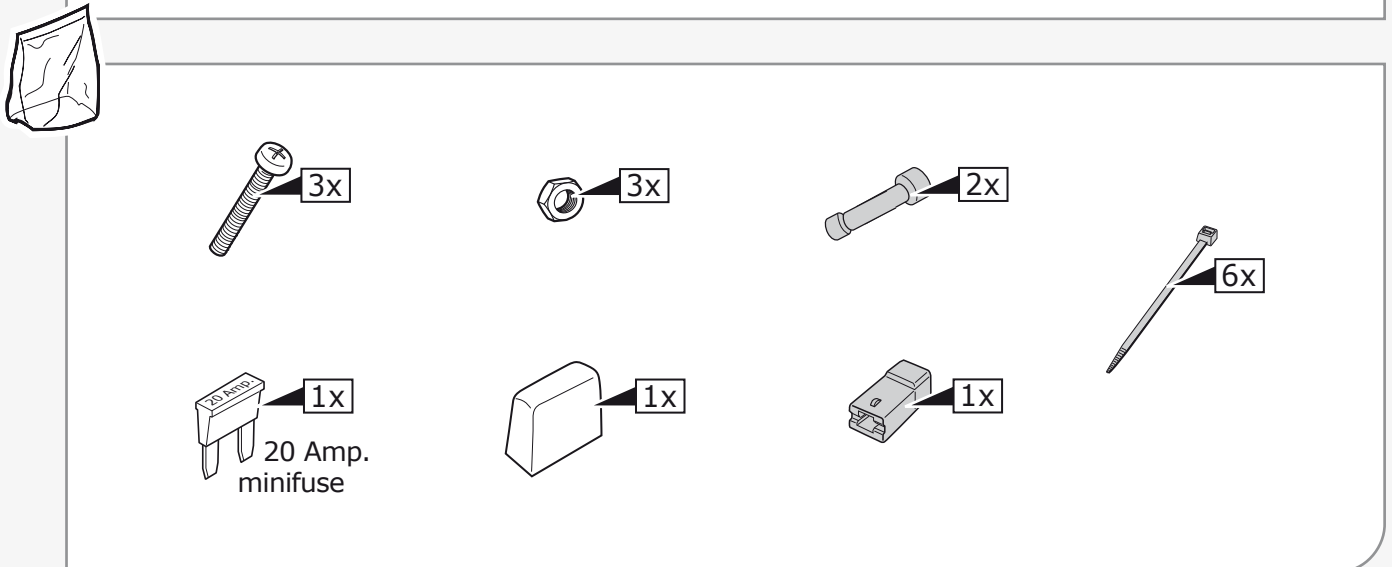
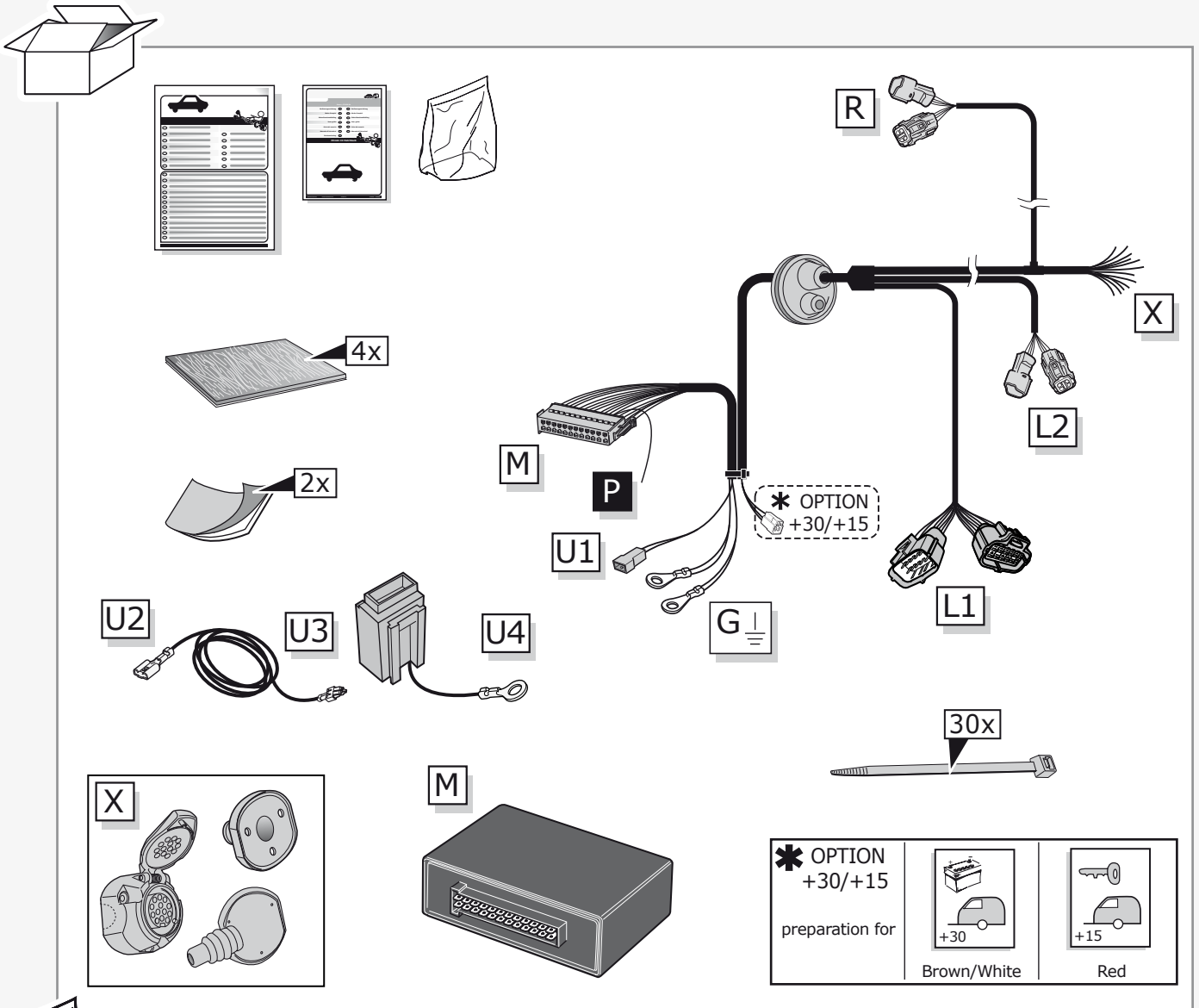
Kia Sportage QL 01/2016 >> 07/2018
Kia Sportage QL 08/2018 >>

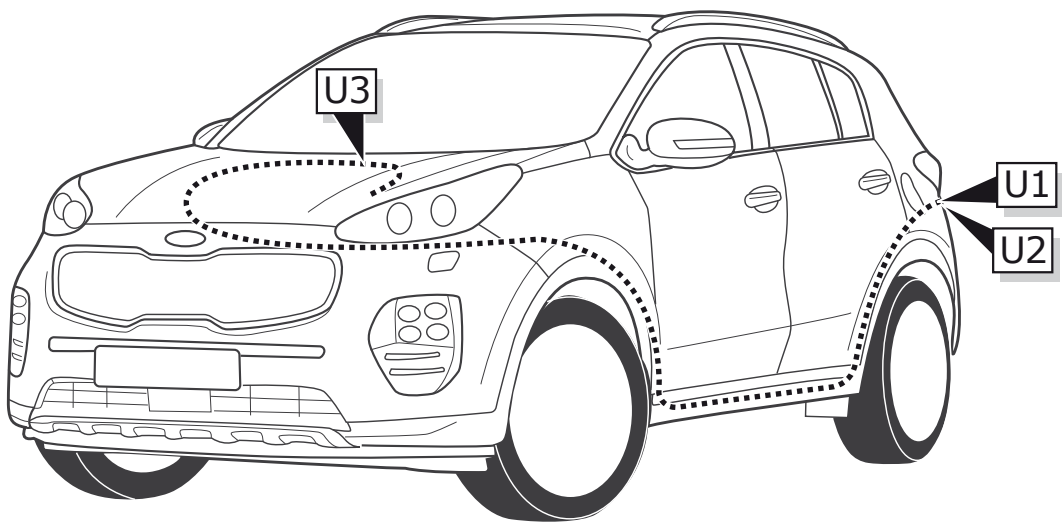
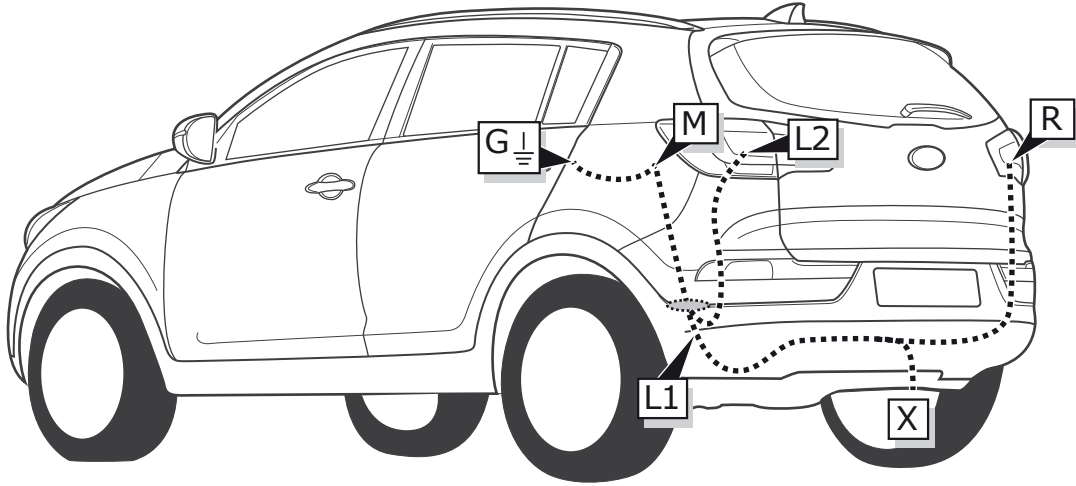
Partnr.: KI-087-DHU

- Fitting instructions electric wiring kit tow bar with 13-P socket up to DIN/ISO Norm 11446.
- We would expressly point out that assembly not carried out properly by a competent installer will result in cancellation of any right to damage compensation, in particular those arising by virtue of the product liability act.
- Contents of these kits and their fitting manuals are subject to alteration without notice, please ensure that these instructions are read and fully understood before commencing installation.
- Do not overload circuits; the maximum loads per connection are detailed in this manual.
- Attention! Before Installation, please read this manual carefully and inform your customer to consult the vehicle owners manual to check for any vehicle modifications required before towing.
- In the event of functional problems, troubleshooting must be limited to about 0.5 hours, contact the technical support:
ukts@ecs-electronics.com / 07440 202 052.

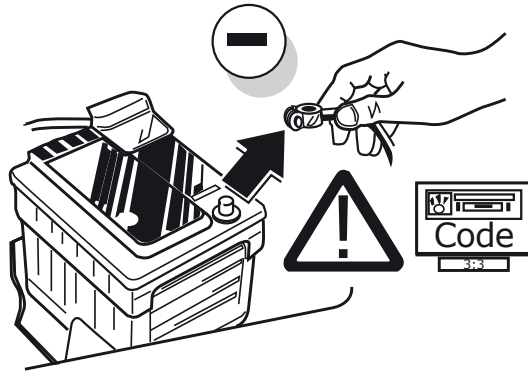


Part list

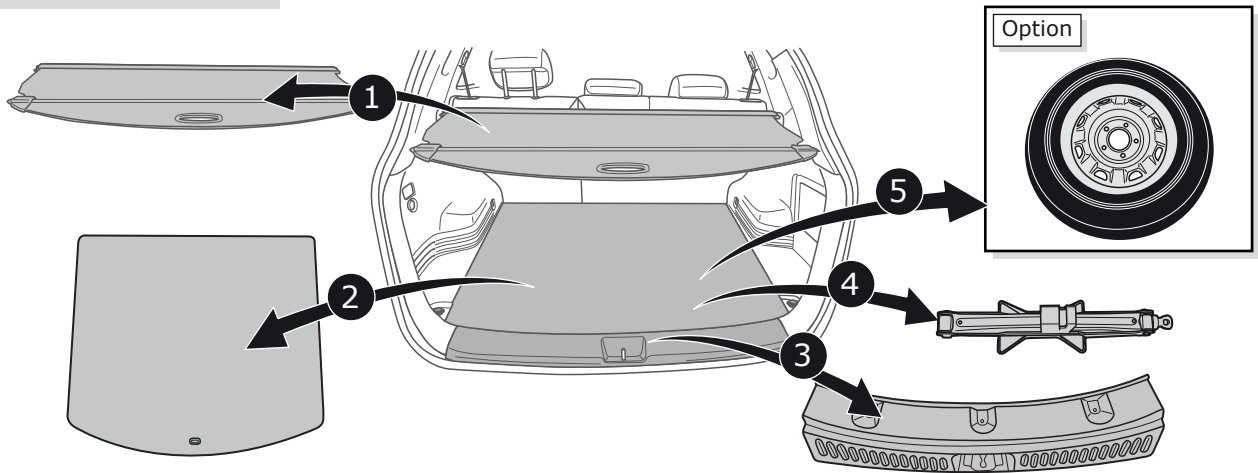
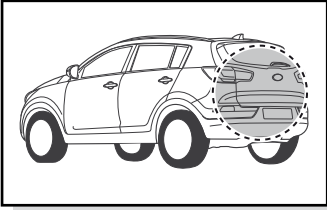




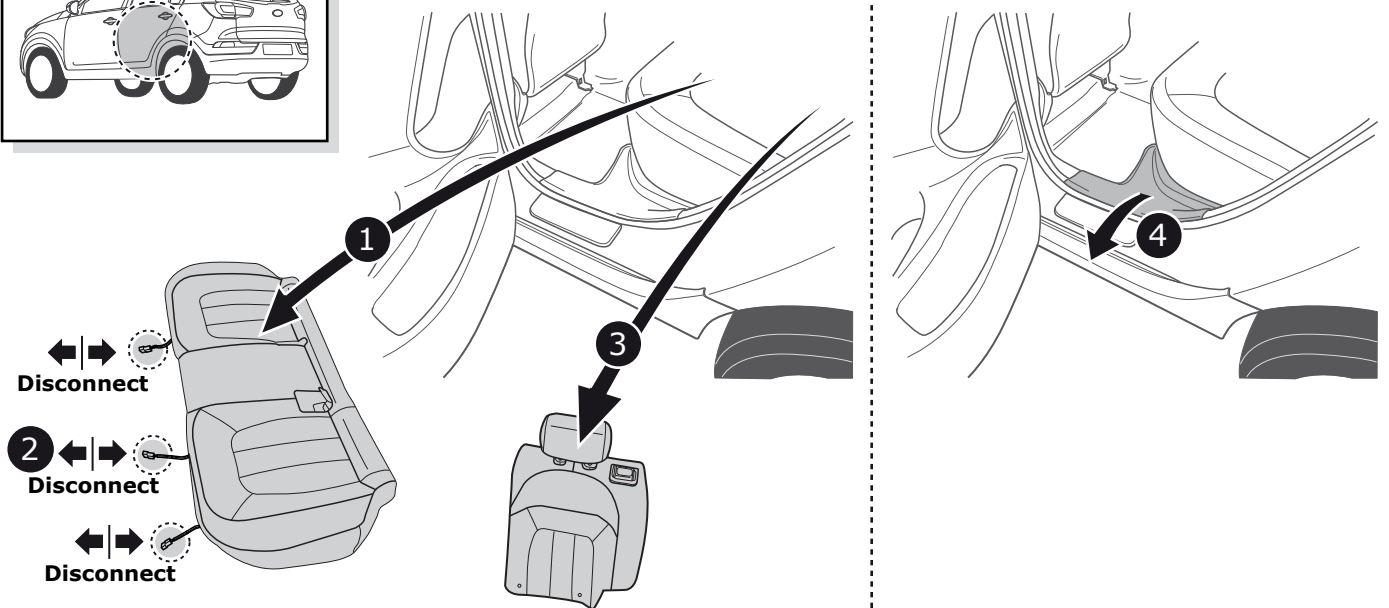
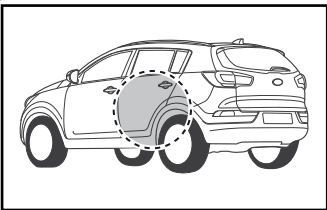
1



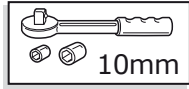
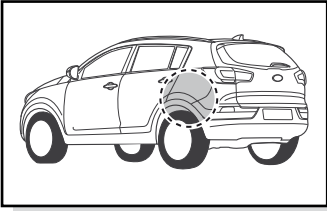
2



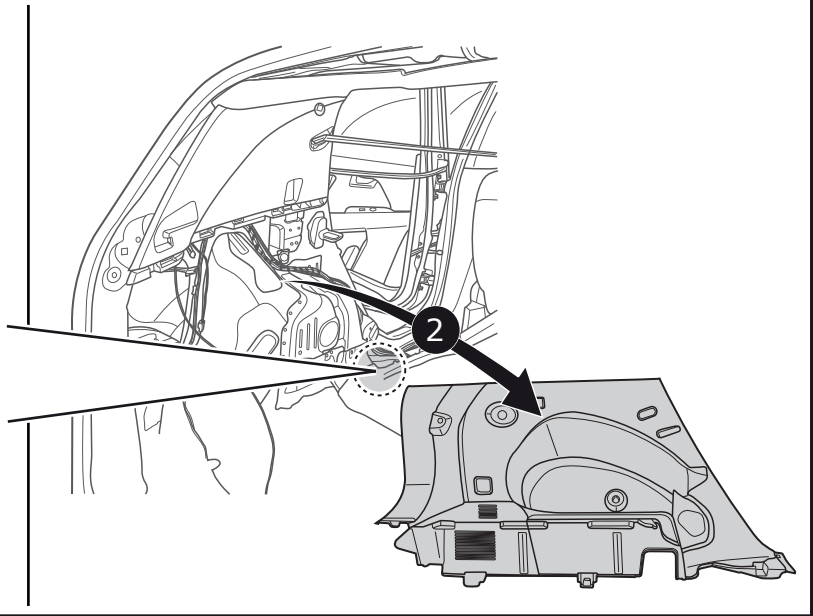
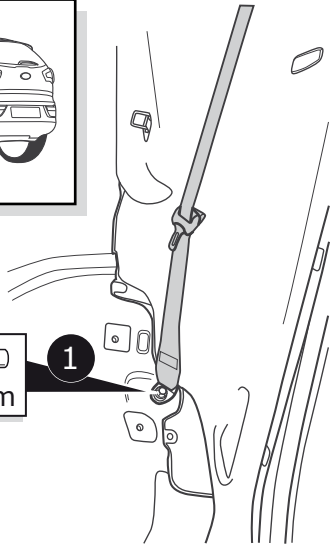
3



4

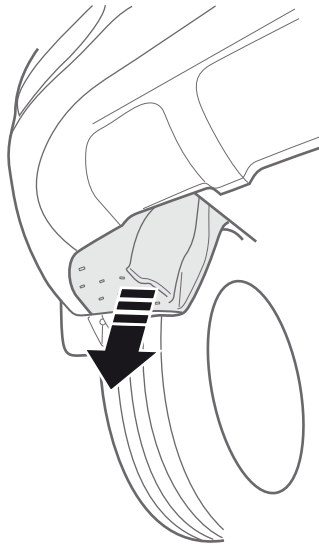
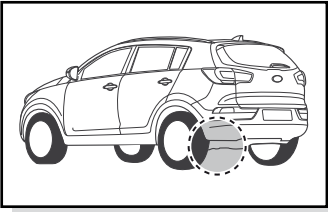


1

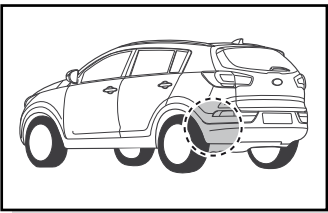


2

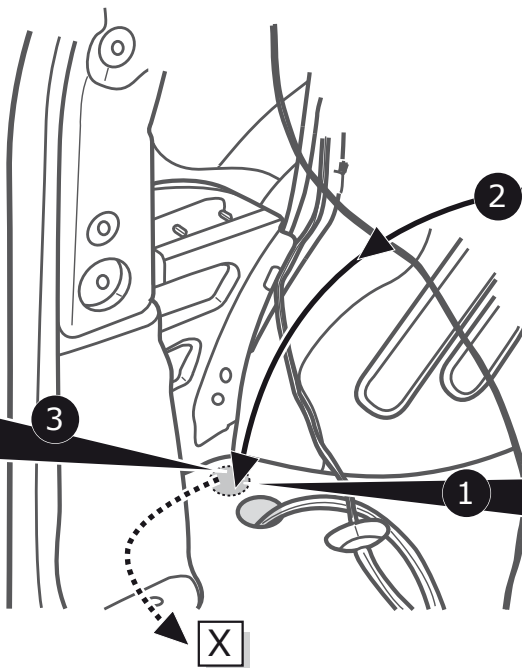
5



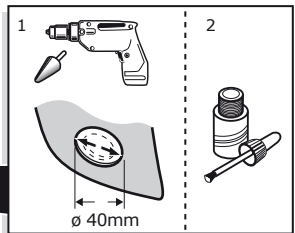
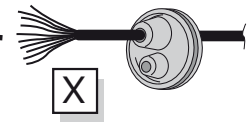
6



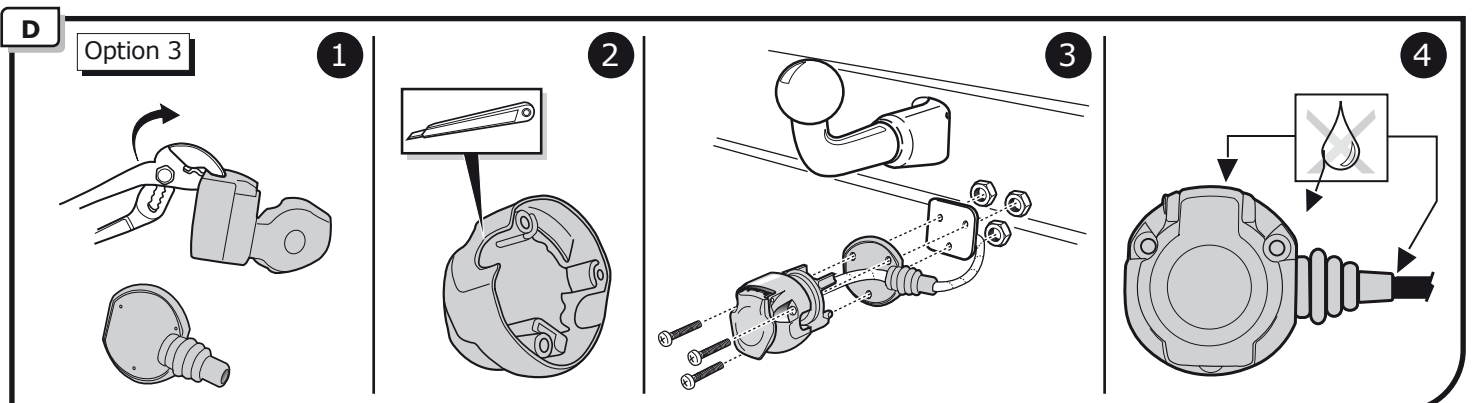
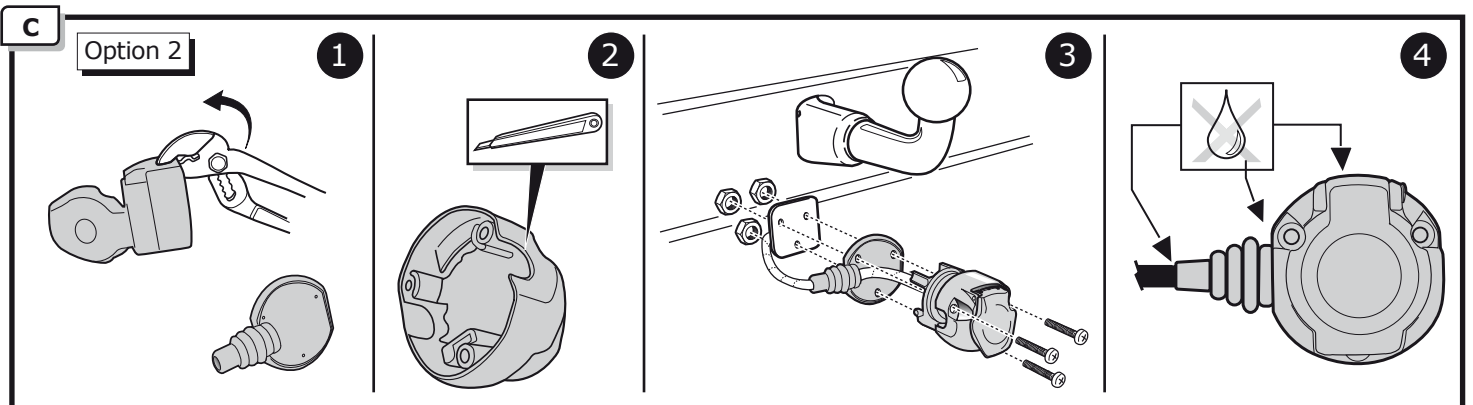
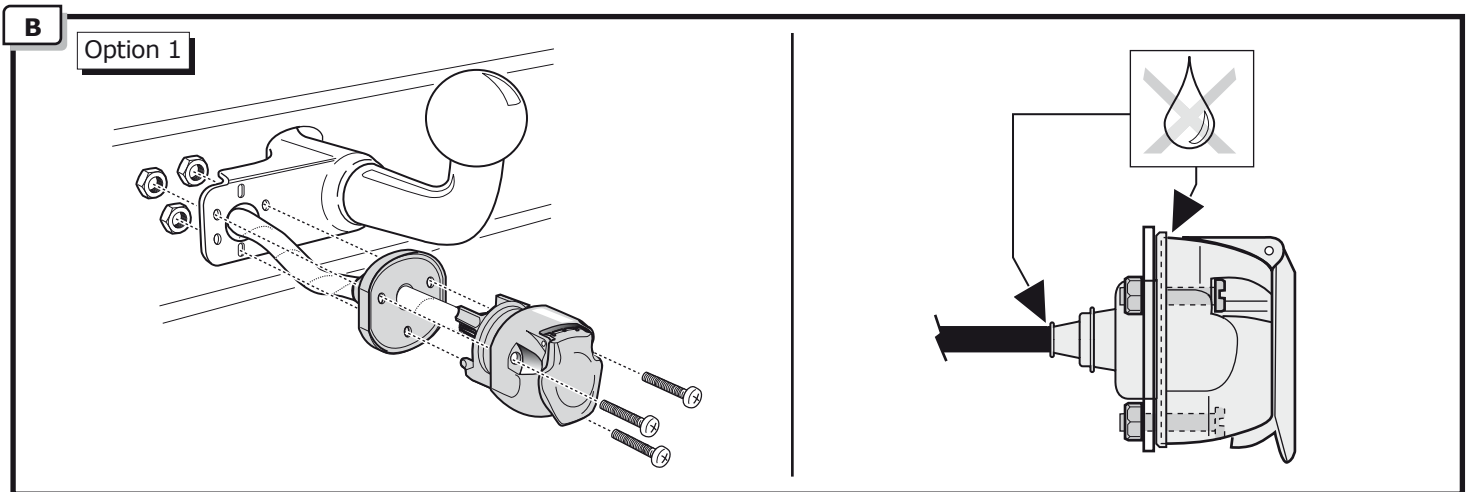
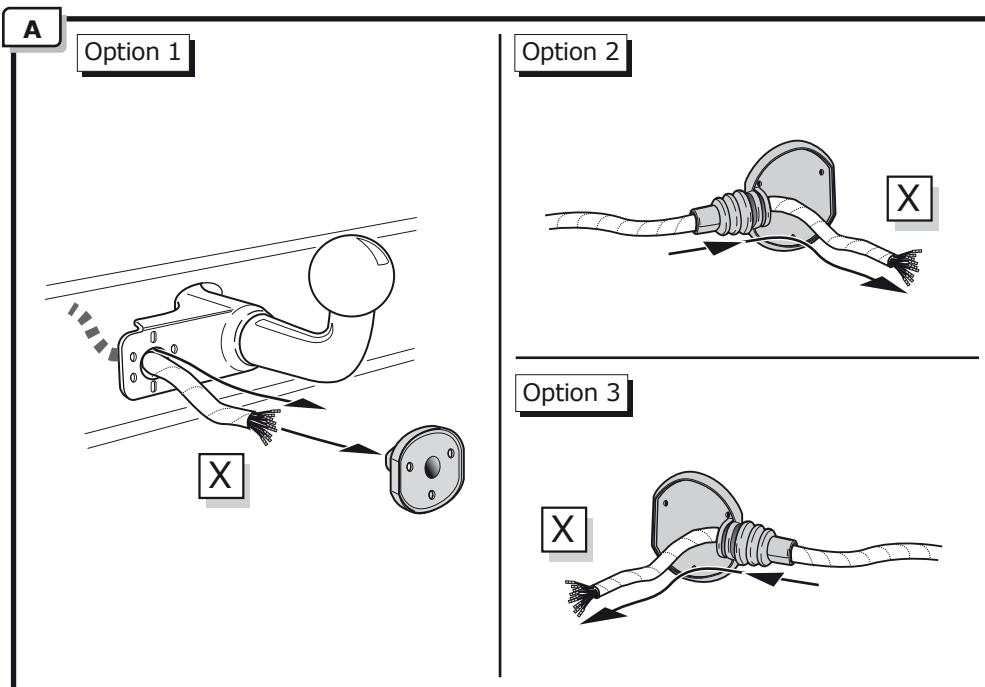
3



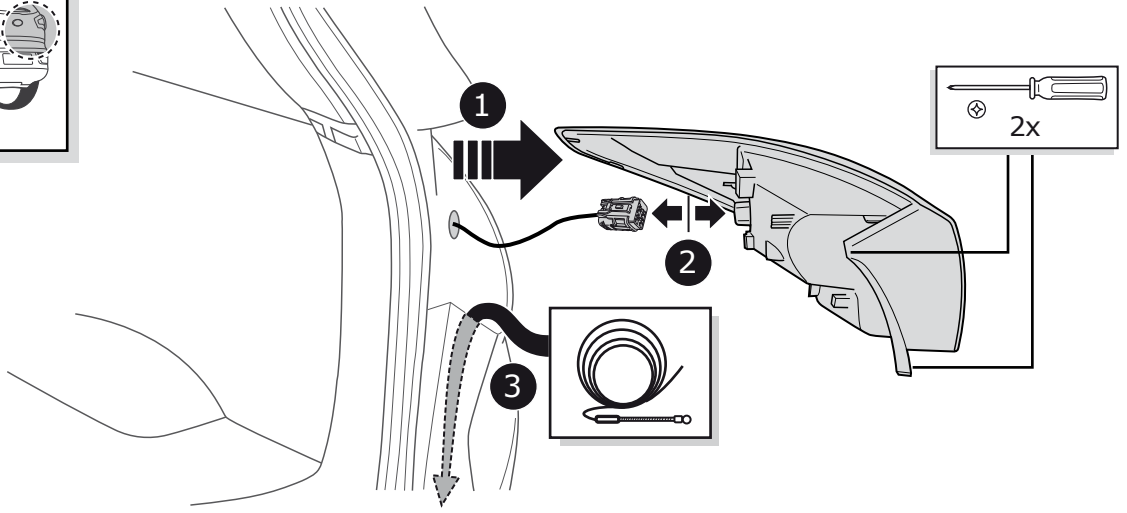
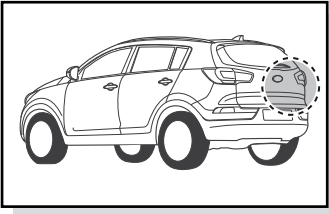
2



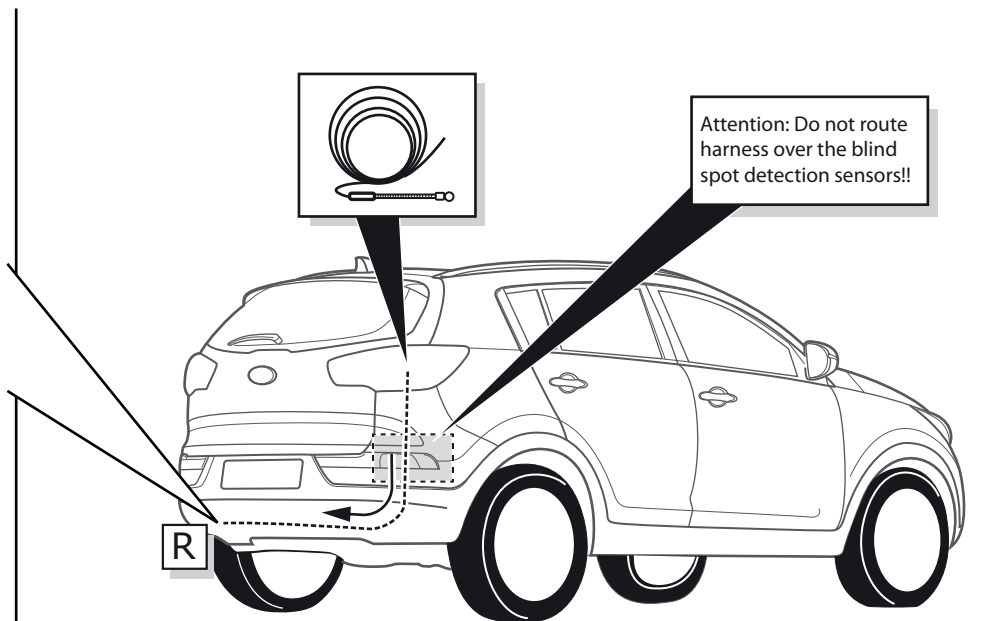
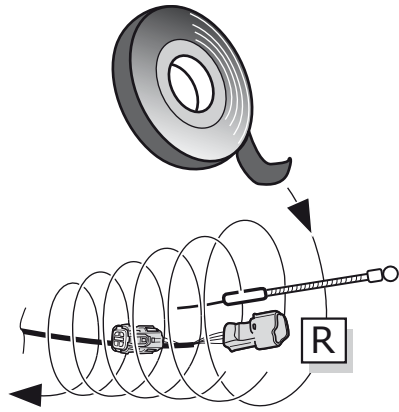
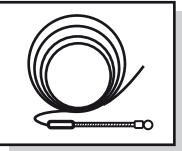
1



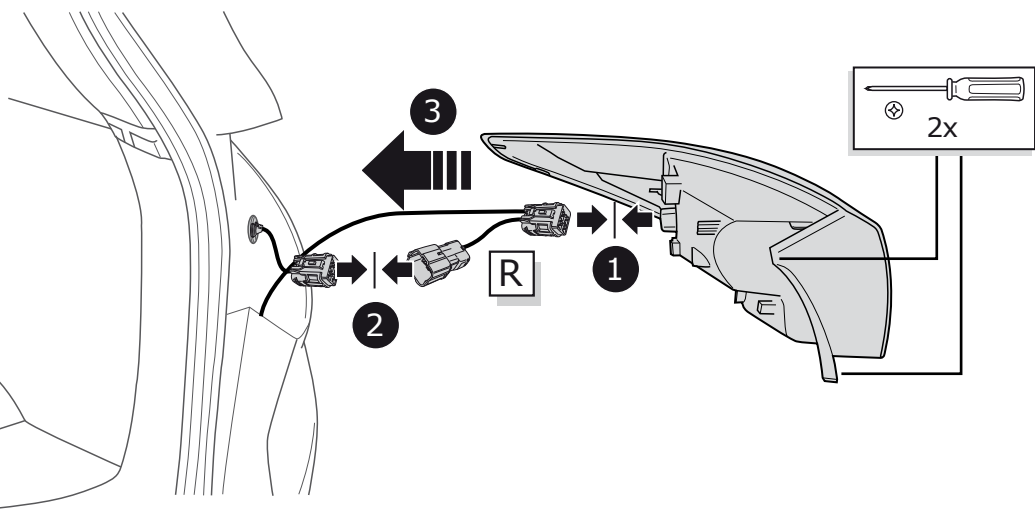
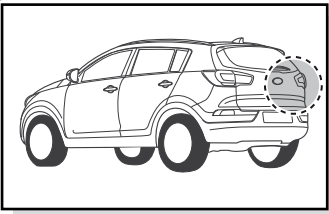
7



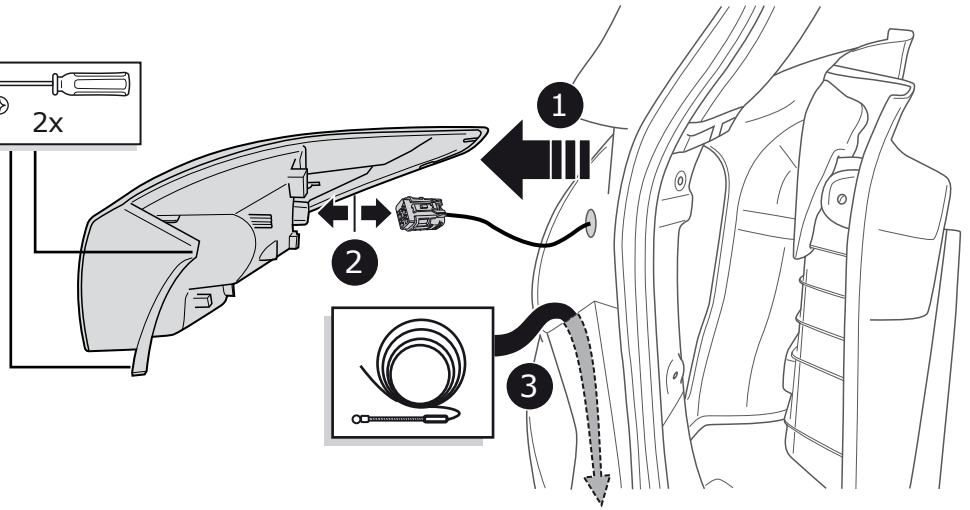
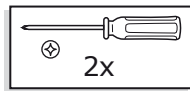
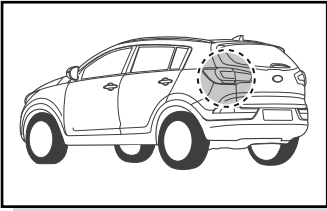
8



9

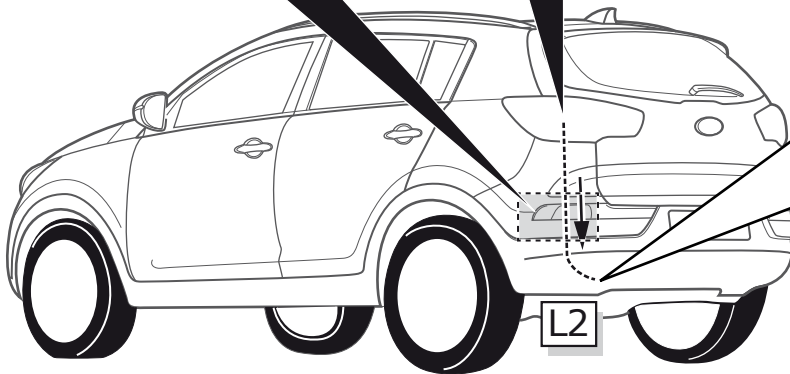
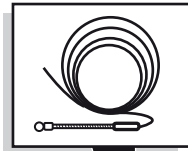


10

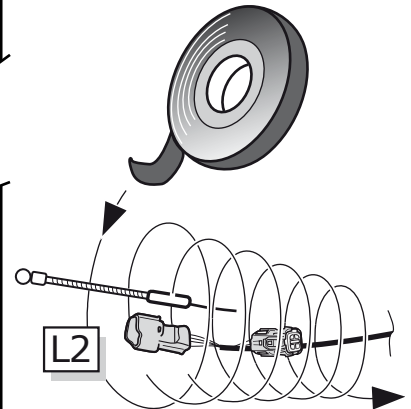
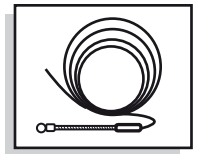


11

Attention: Do not route harness over the blind spot detection sensors!!

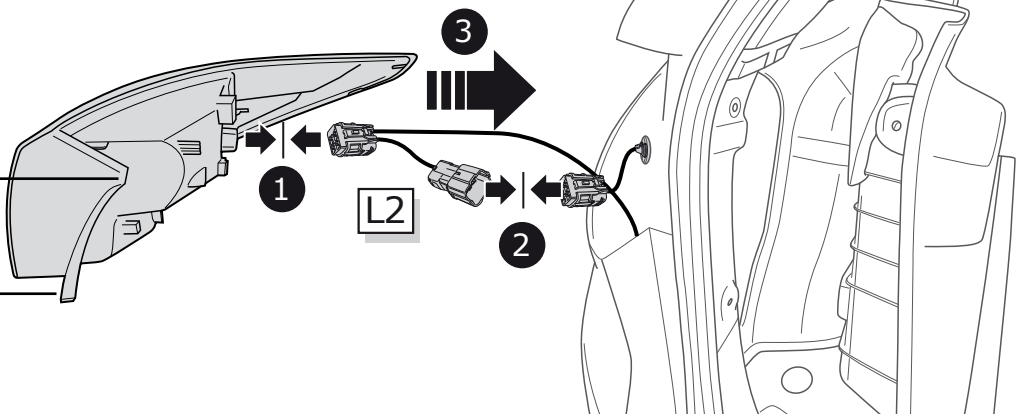
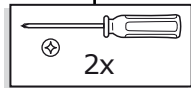
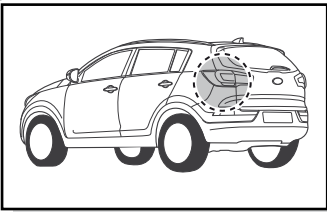


L2

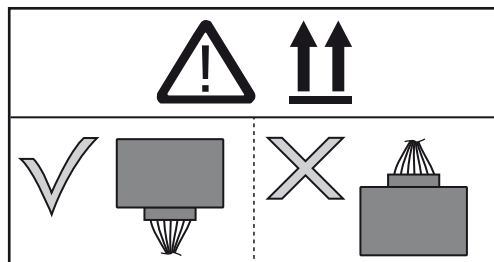
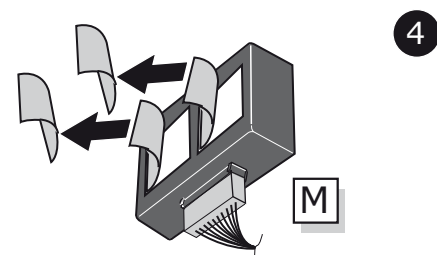
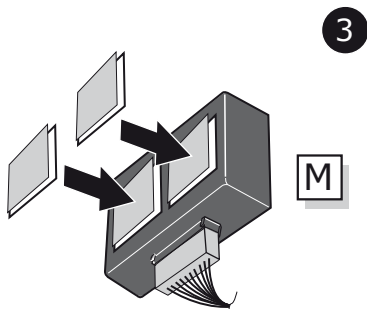
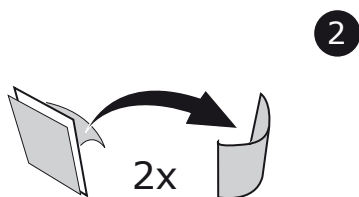
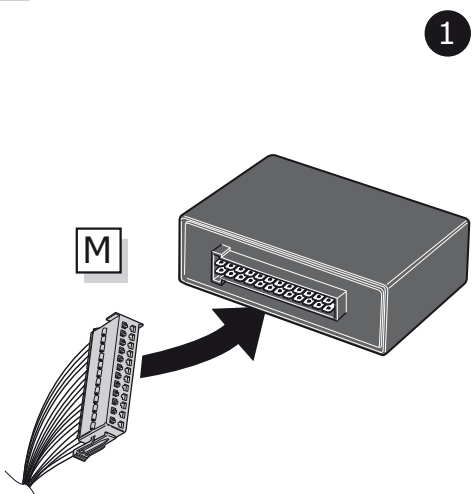
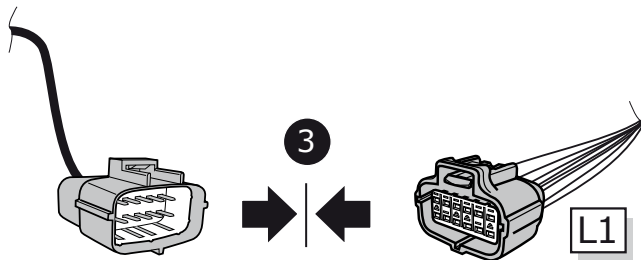
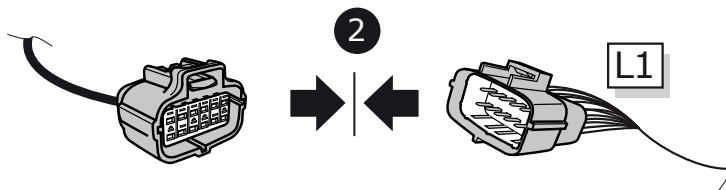
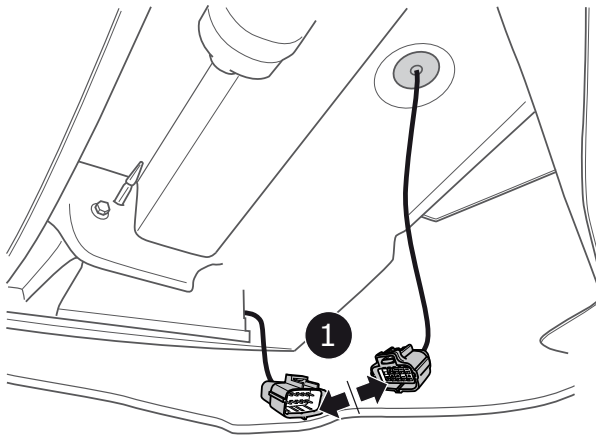
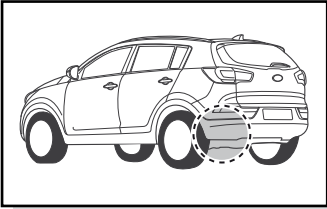


L2

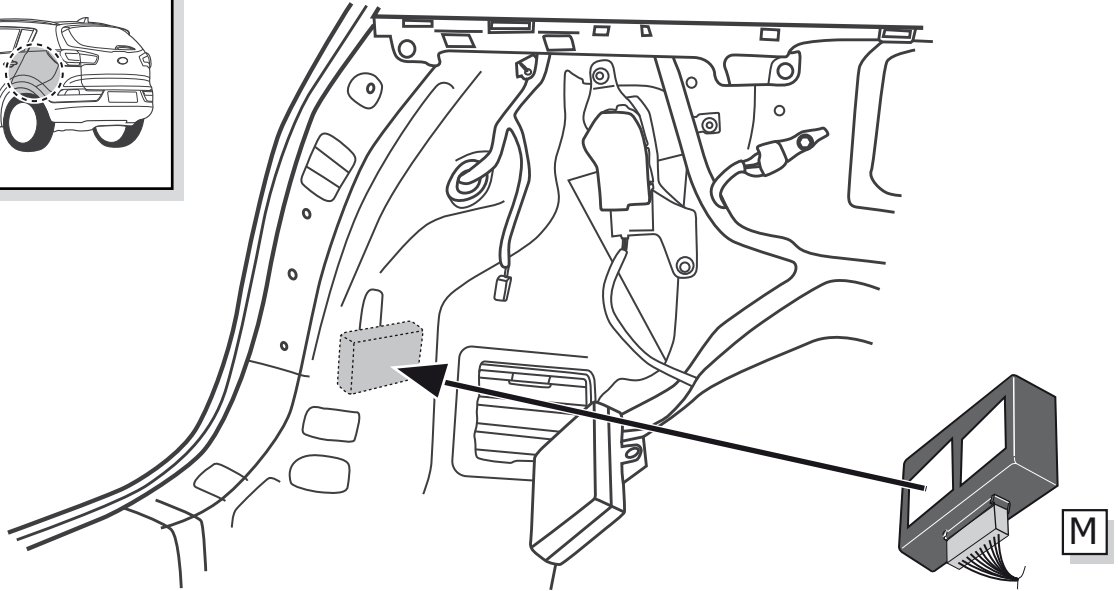
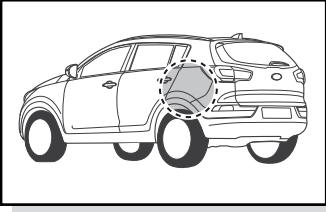
12



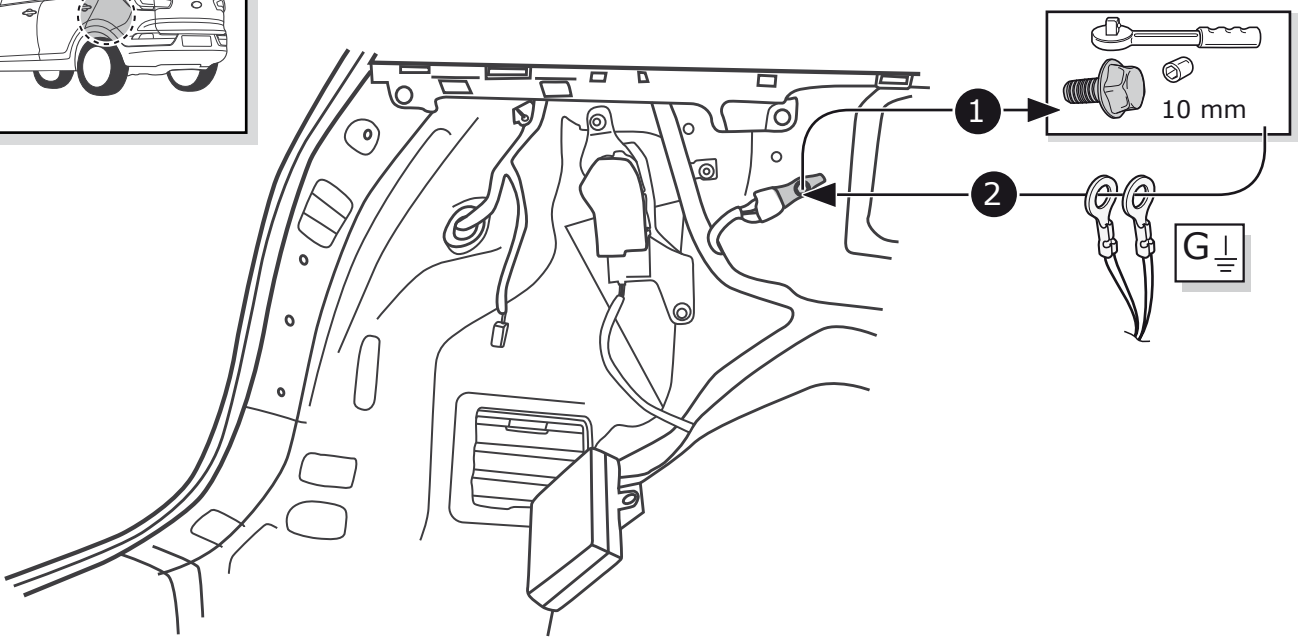
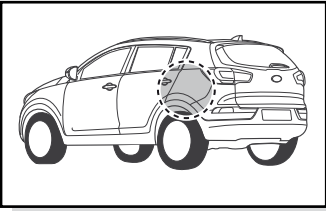
L2



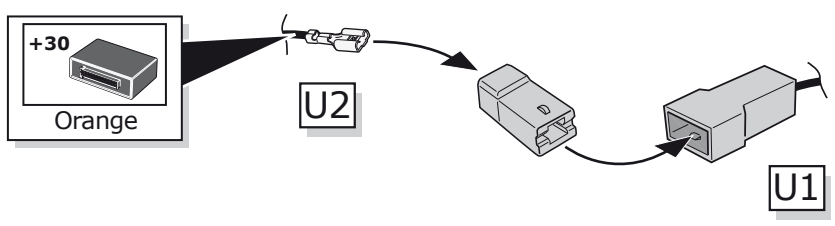
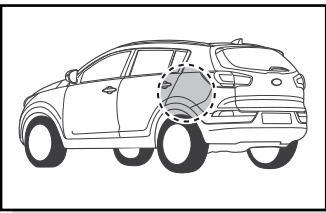
15

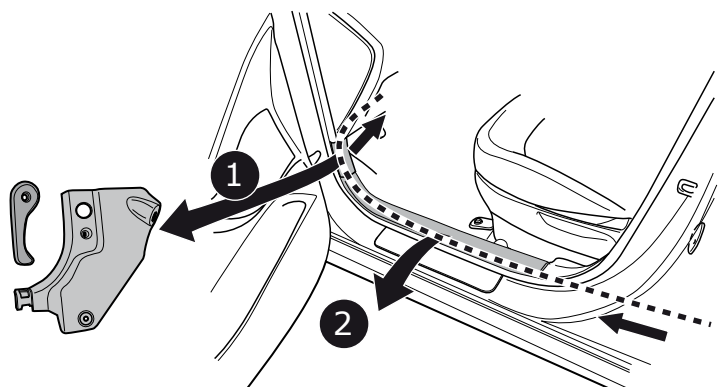
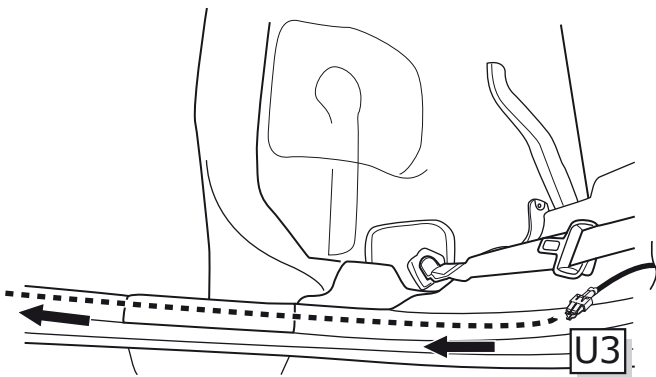
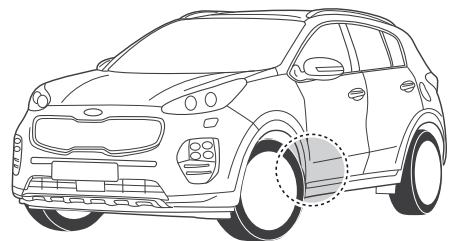
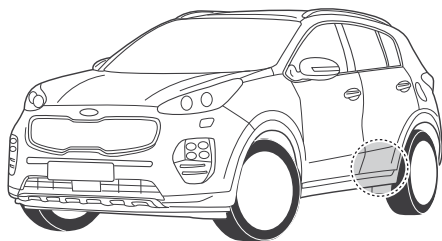
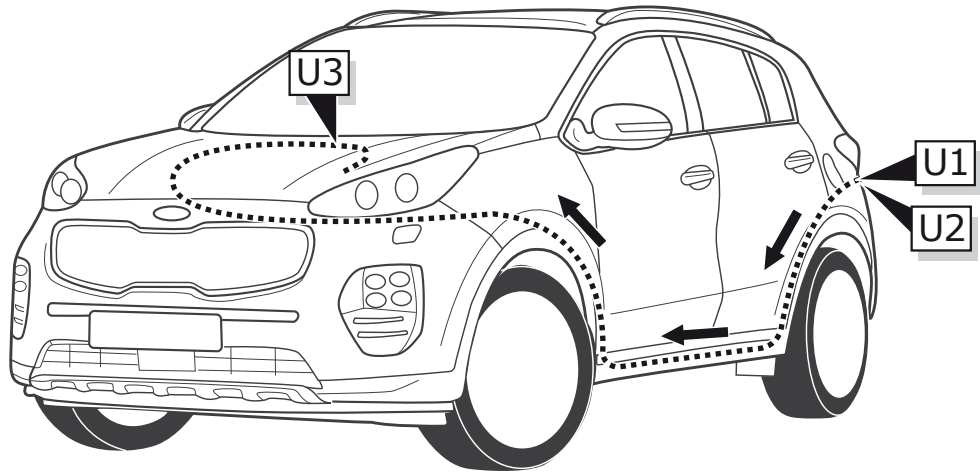


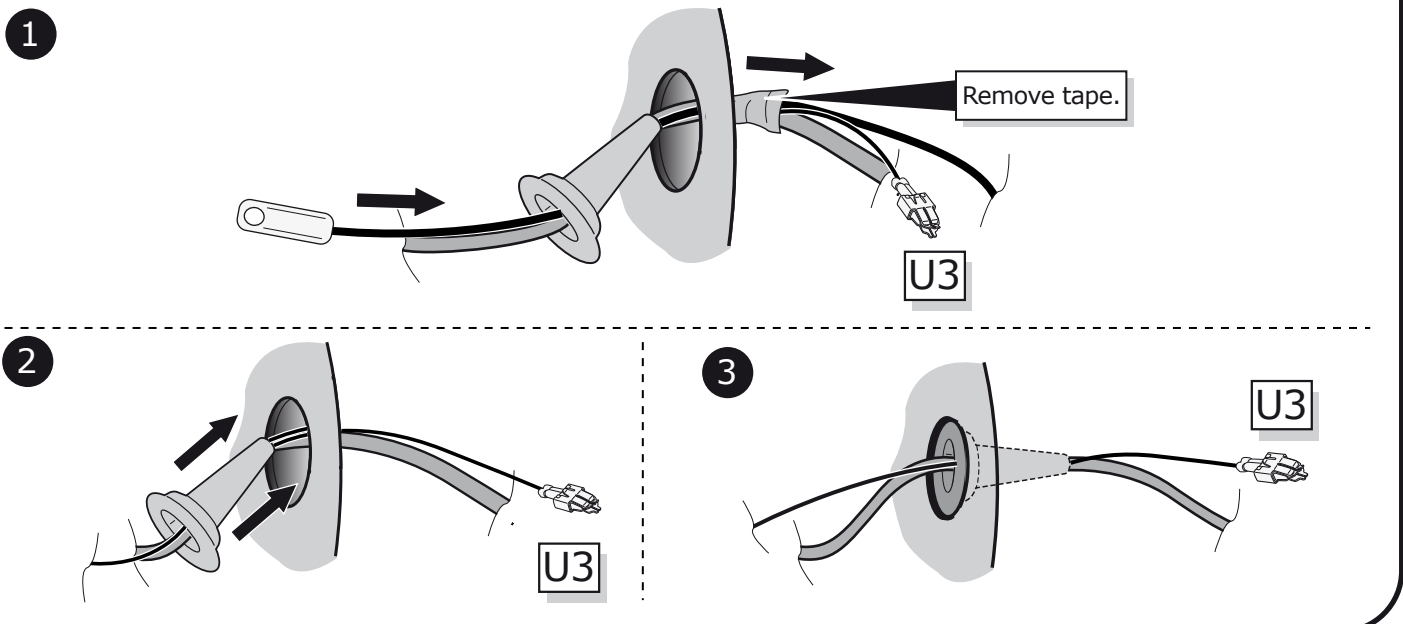
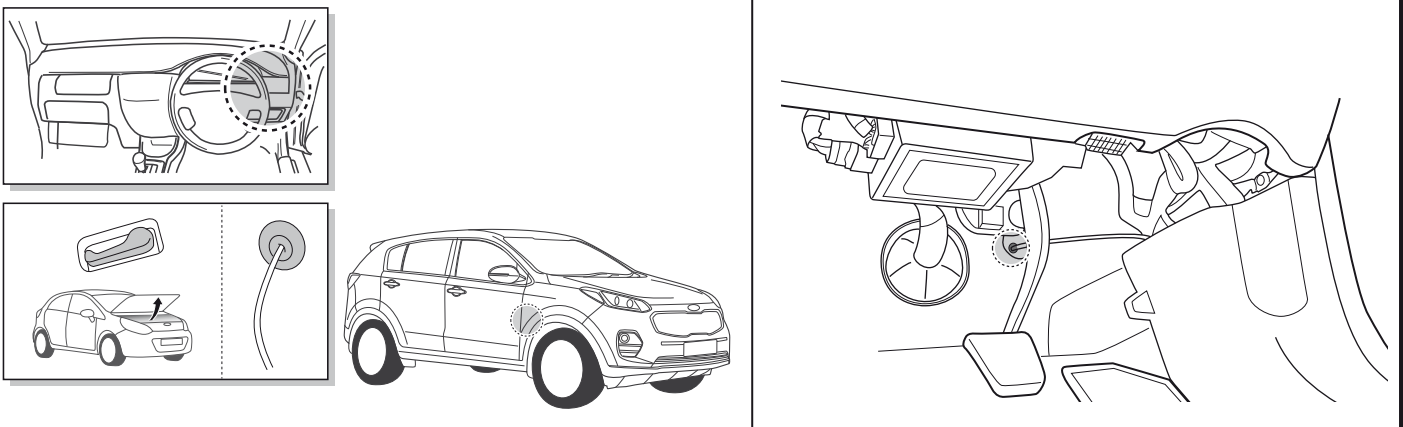
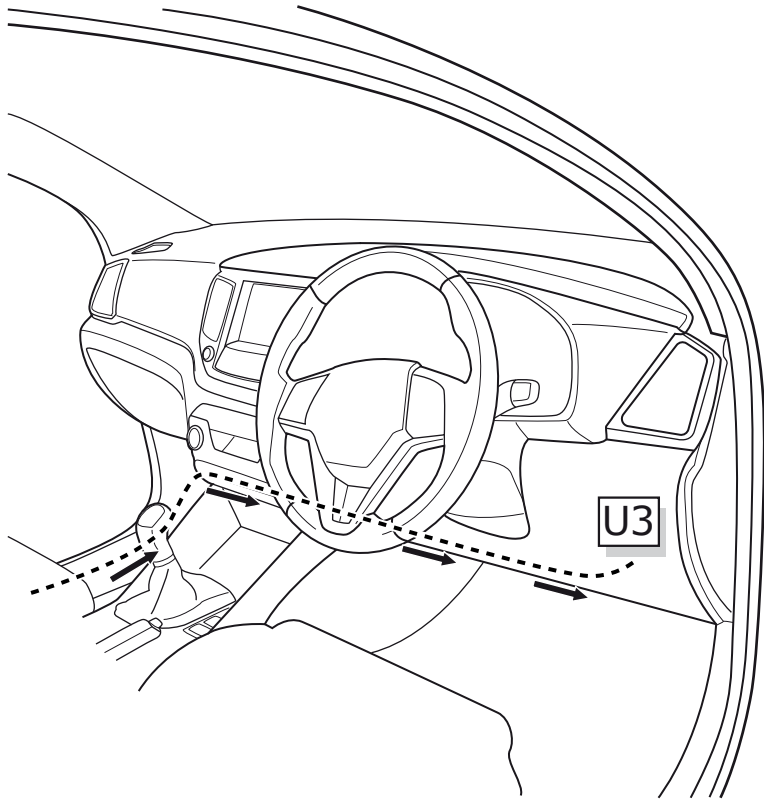
16



17

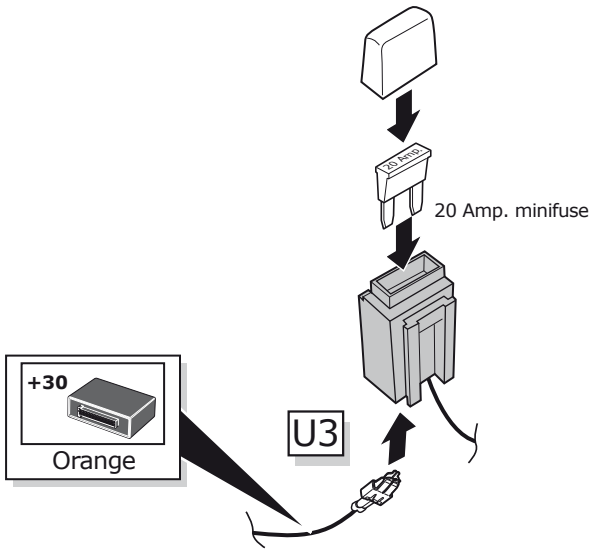






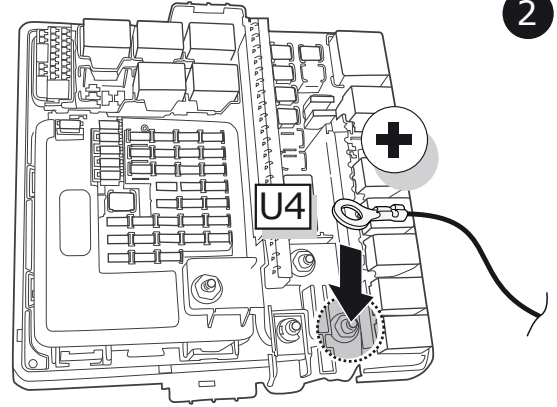
22

1



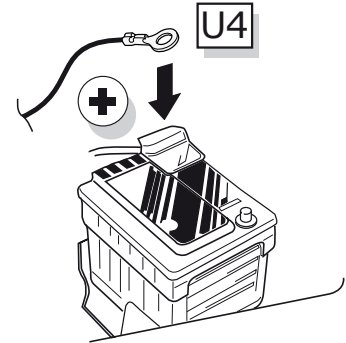
Option 1

2

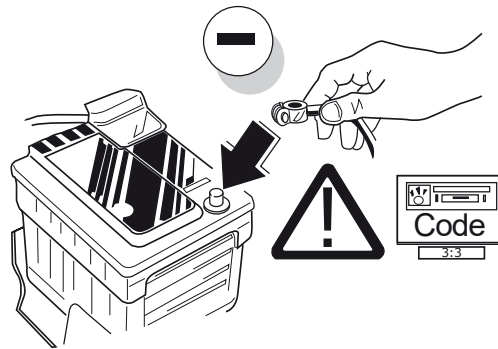


Option 2

2



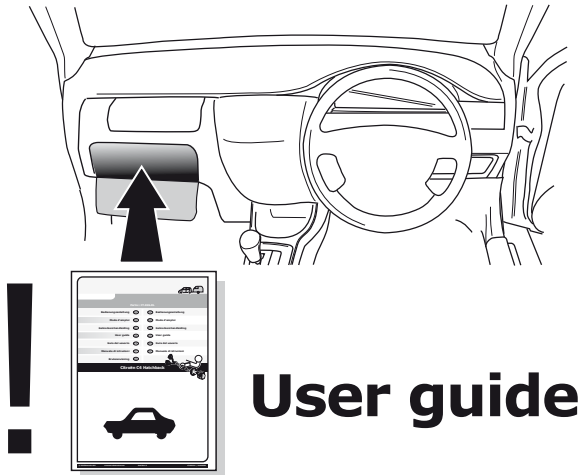
23



24

TEST ALL THE CIRCUITS WITH A TEST DEVICE WITH THE CORRECT POWER LOAD FOR EACH FUNCTION. A TEST DEVICE WITH LED'S CANNOT BE USED FOR THIS PURPOSE.

REINSTALL TRIM.



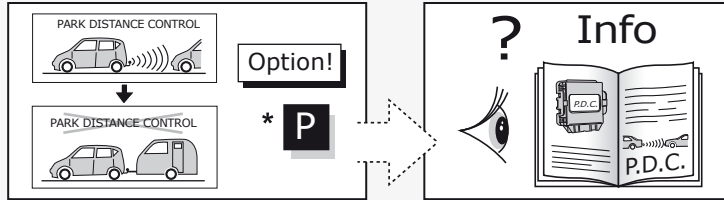
User guide



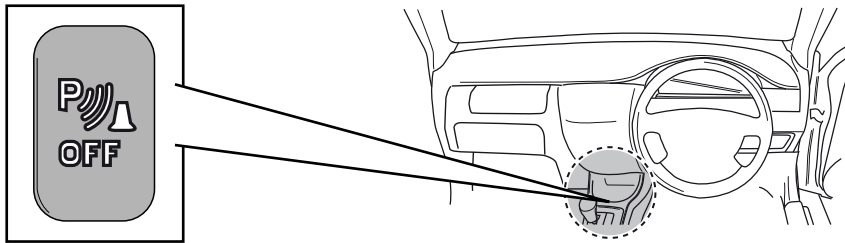
SOCKET CONNECTION

DIN/ISO 11446													
	1/L	2	3/31	4/R	5/58-R	6/54	7/58-L	8	9	10	11	12	13
Pmax	21W	21W		21W	42W	3x21W	42W	21W	180W/15Amp	180W/15Amp			
Colour	Yellow	Blue	White	Green	Brown	Red 1,00 mm ²	Black	Black/ Red	Brown/ White	Red 2,50 mm ²	White	-	White

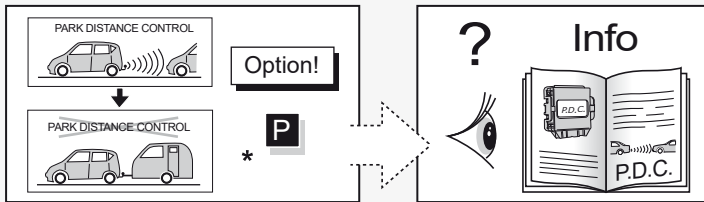
Option 1



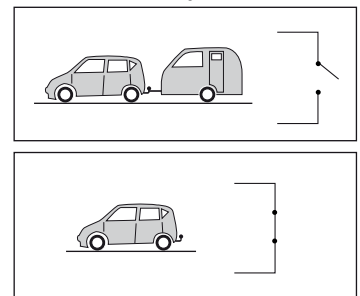
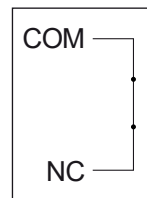
For OEM installed PDC systems



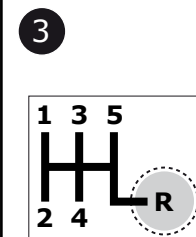
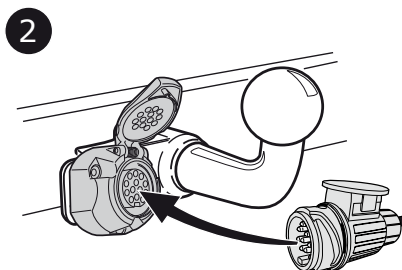
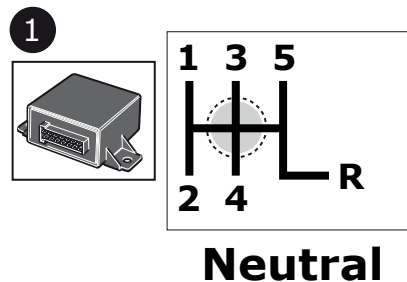
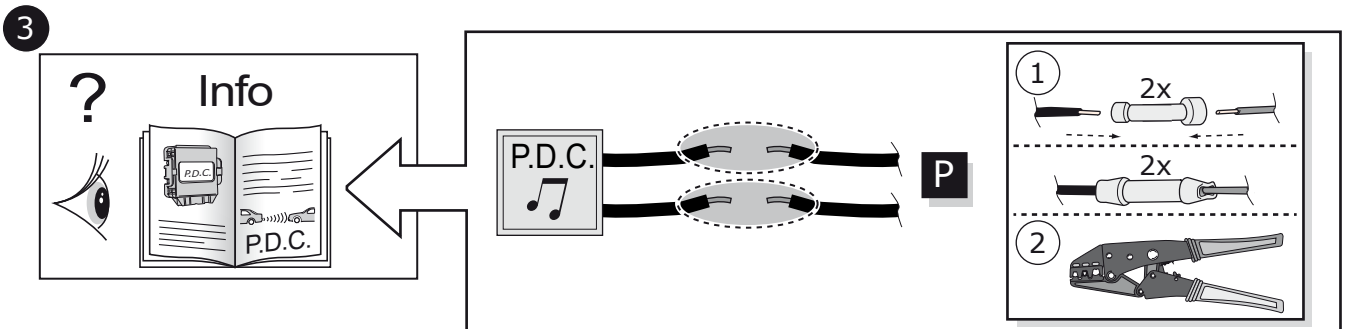
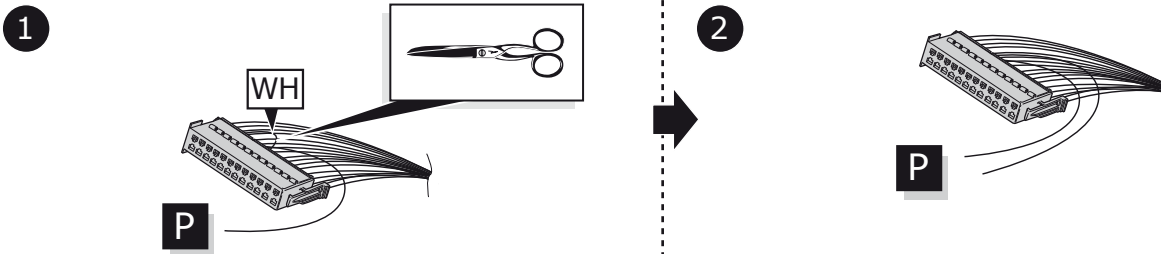
Option 2



Normally closed



For aftermarket installed PDC systems



TEST