

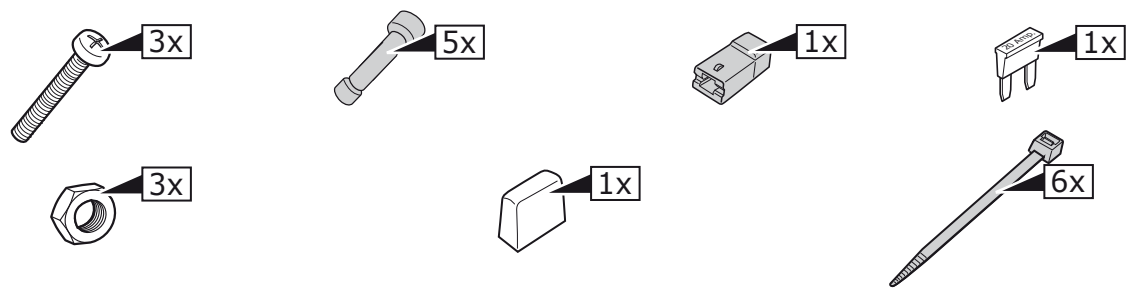
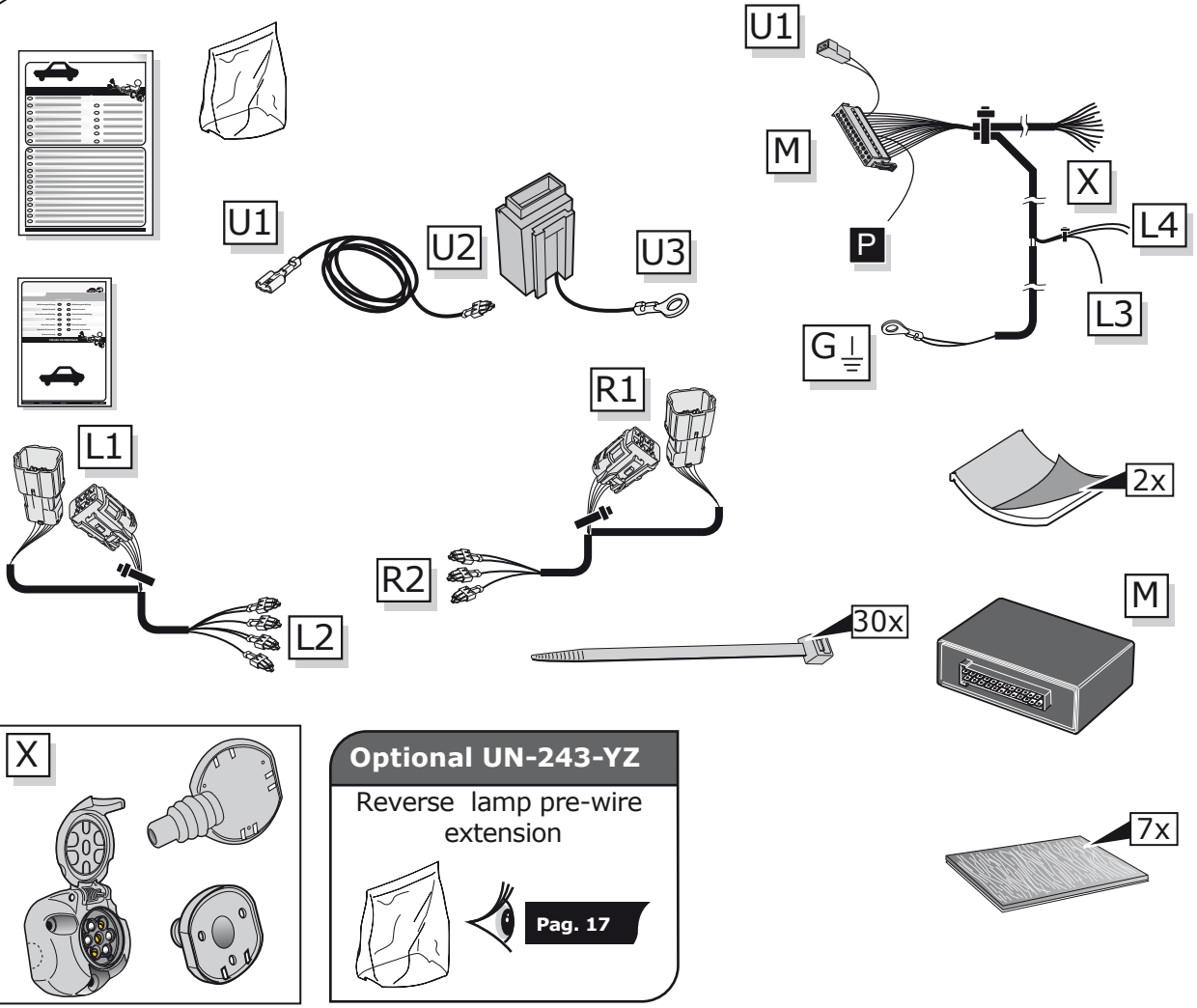
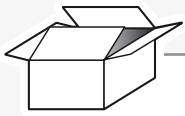
Kia Sorento 2015-

Partnr.: KI-091-BHU

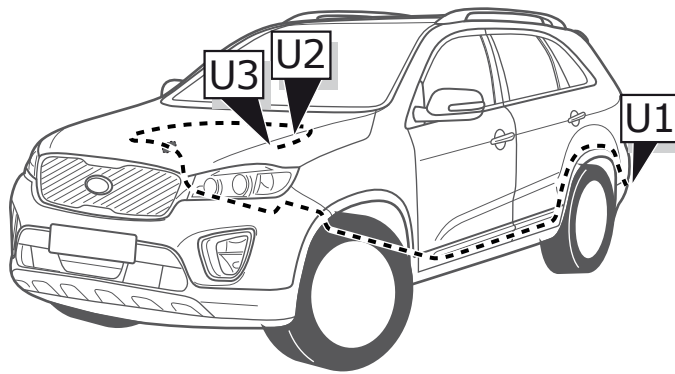
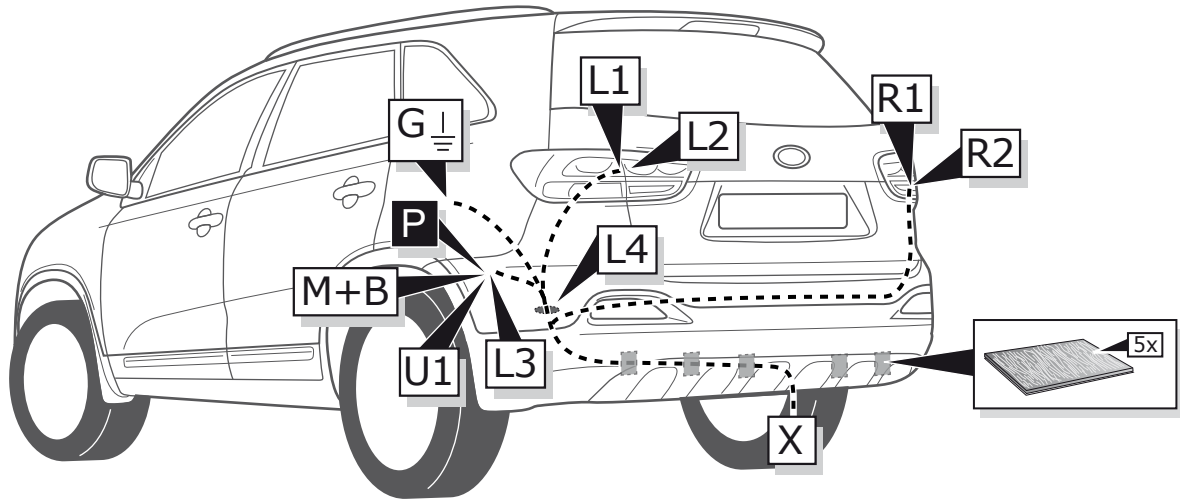
- Fitting instructions electric wiring kit tow bar with 12-N socket up to DIN/ISO Norm 1724.
- We would expressly point out that assembly not carried out properly by a competent installer will result in cancellation of any right to damage compensation, in particular those arising by virtue of the product liability act.
- Contents of these kits and their fitting manuals are subject to alteration without notice, please ensure that these instructions are read and fully understood before commencing installation.
- Do not overload circuits; the maximum loads per connection are detailed in this manual.
- Attention! Before Installation, please read this manual carefully and inform your customer to consult the vehicle owners manual to check for any vehicle modifications required before towing.
- In the event of functional problems, troubleshooting must be limited to about 0.5 hours, contact the technical support:
ukts@ecs-electronics.com / 07440 202 052.



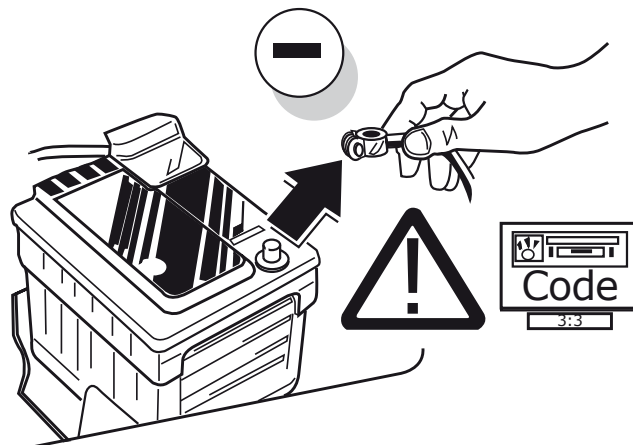
Part list



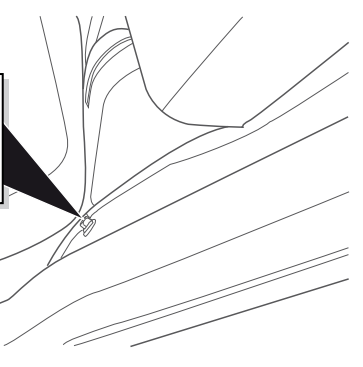
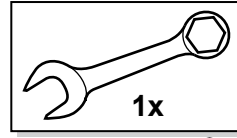
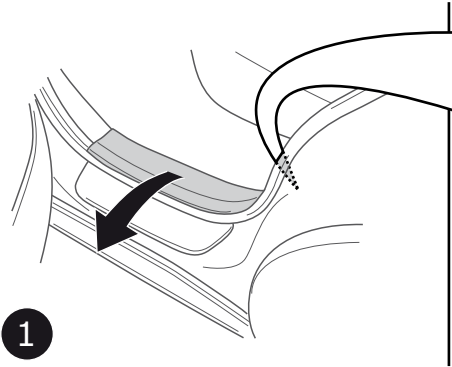
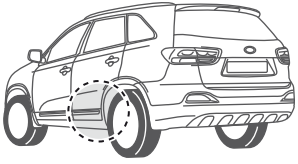
5 Seats & 7 Seats



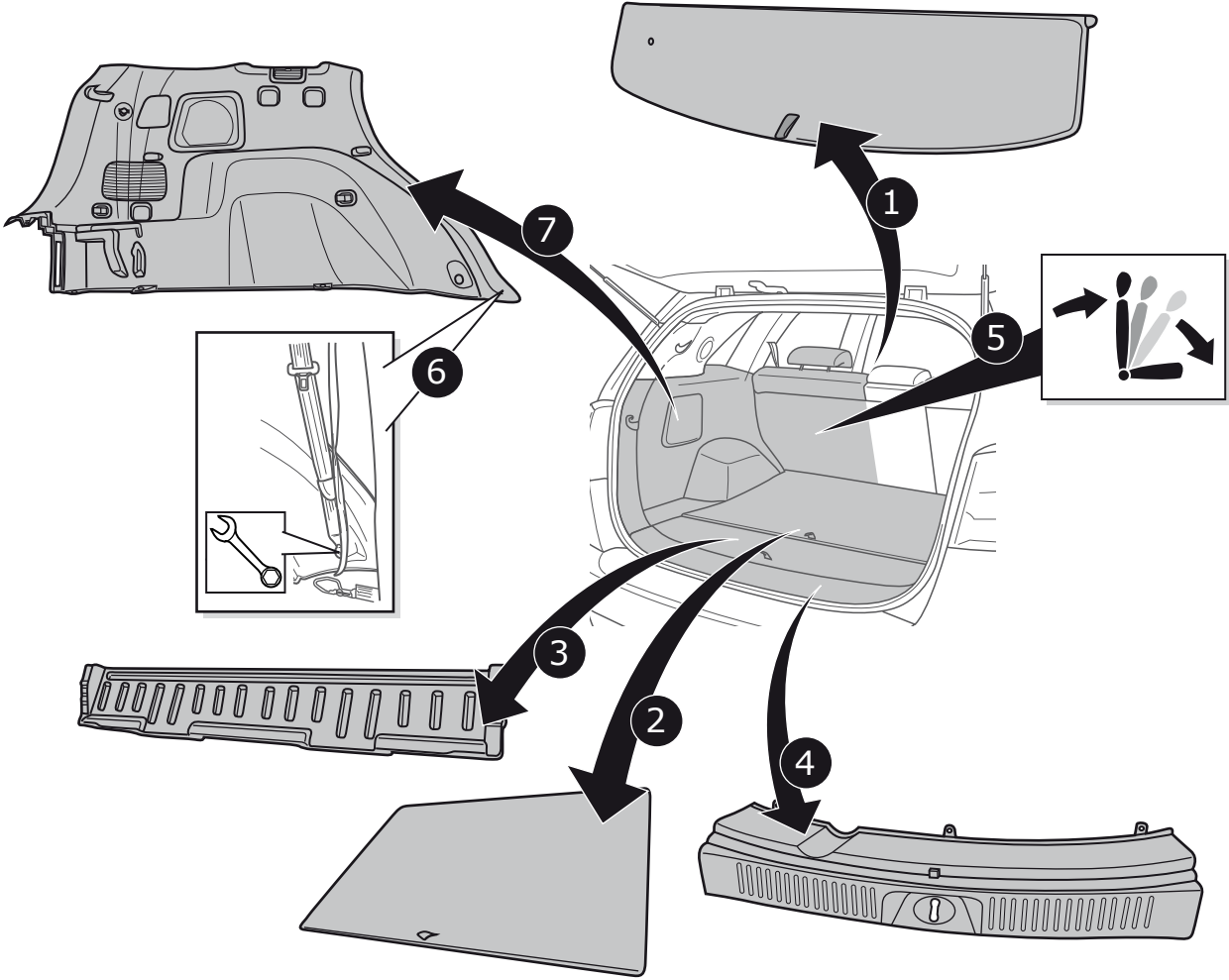
1



2

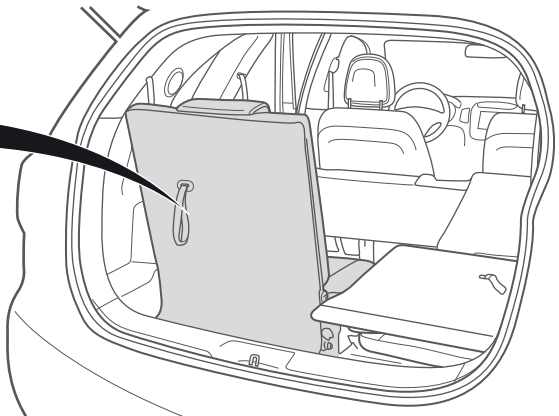
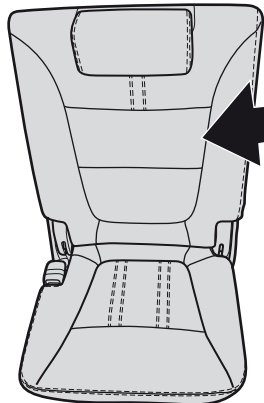
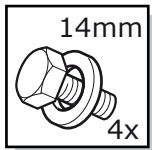


3

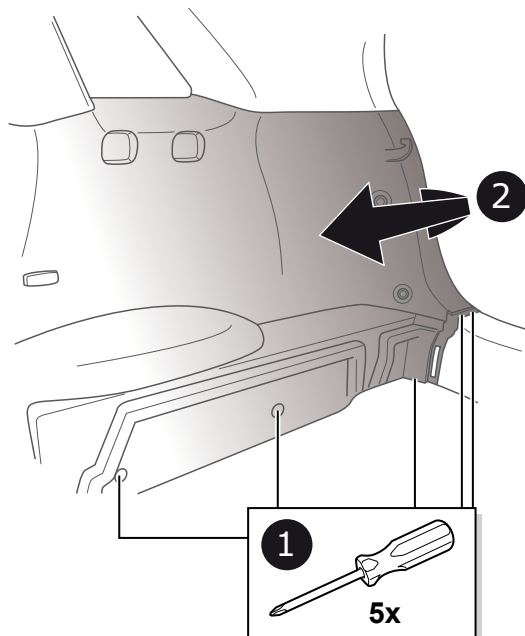
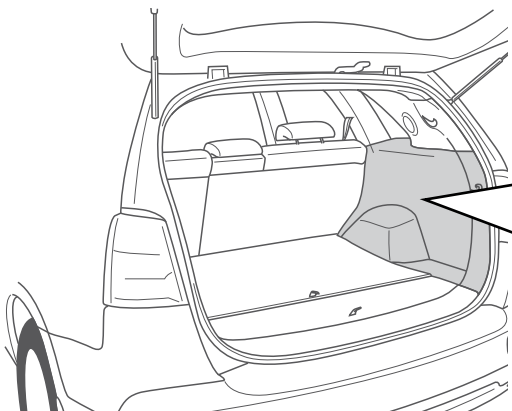


4

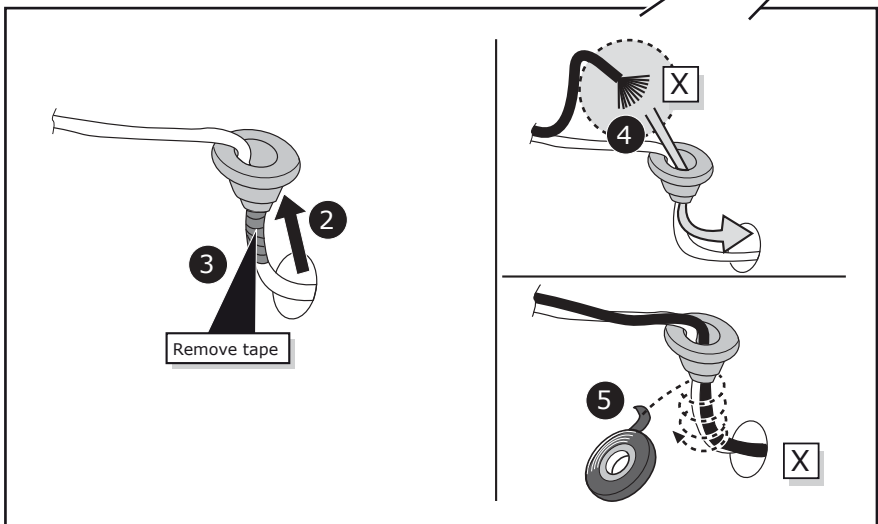
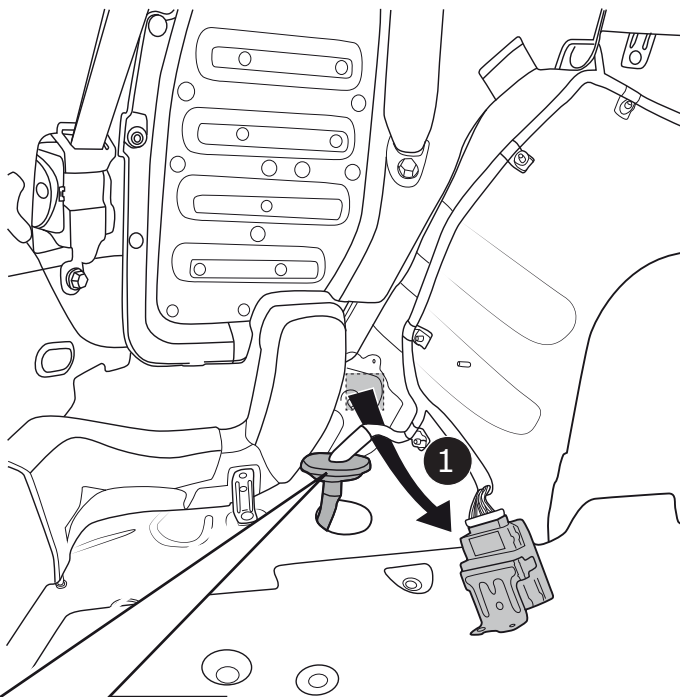
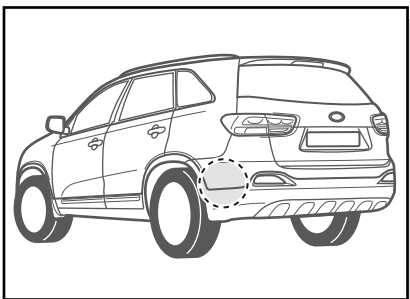
7 Seats

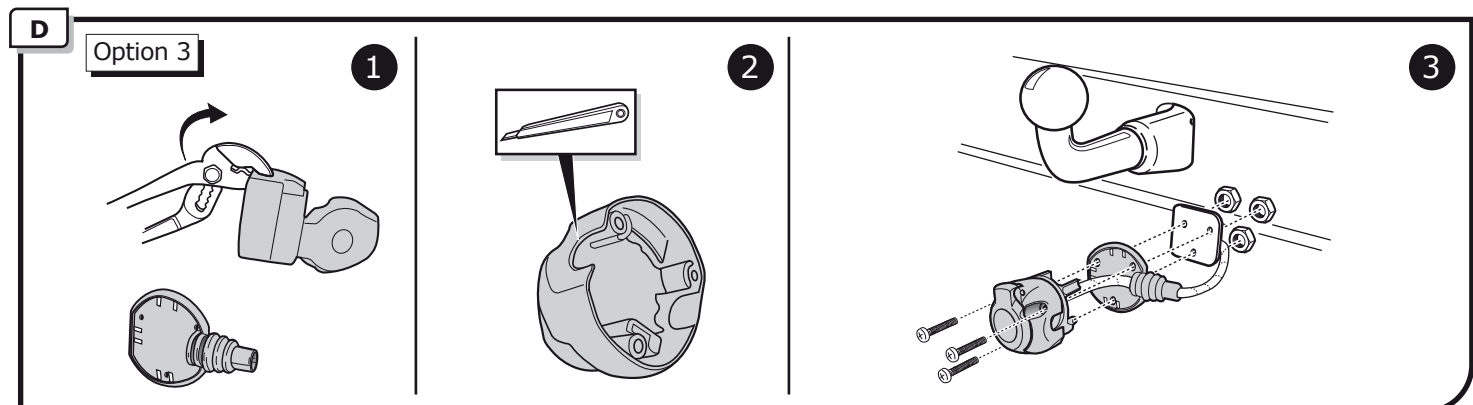
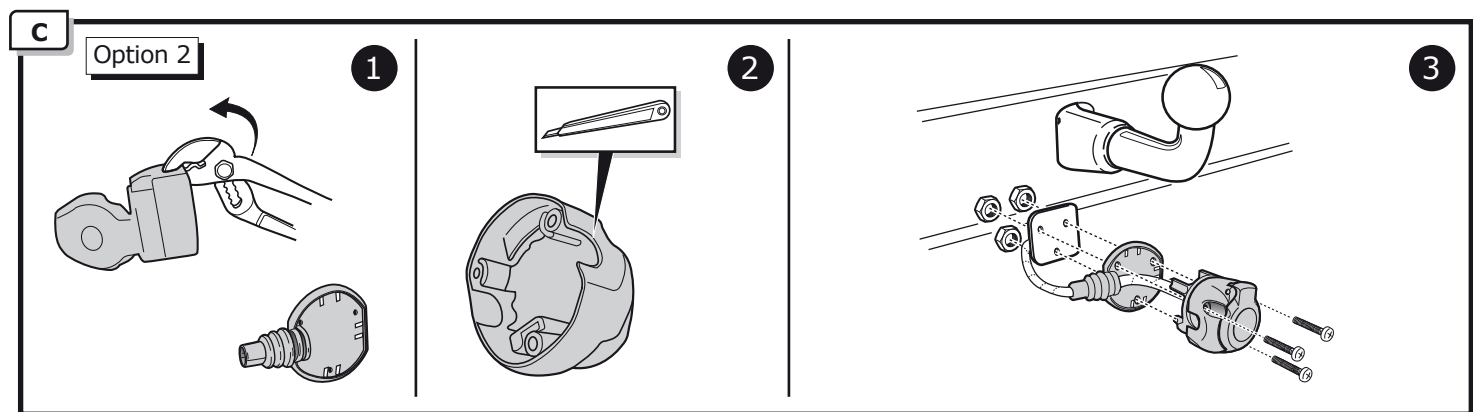
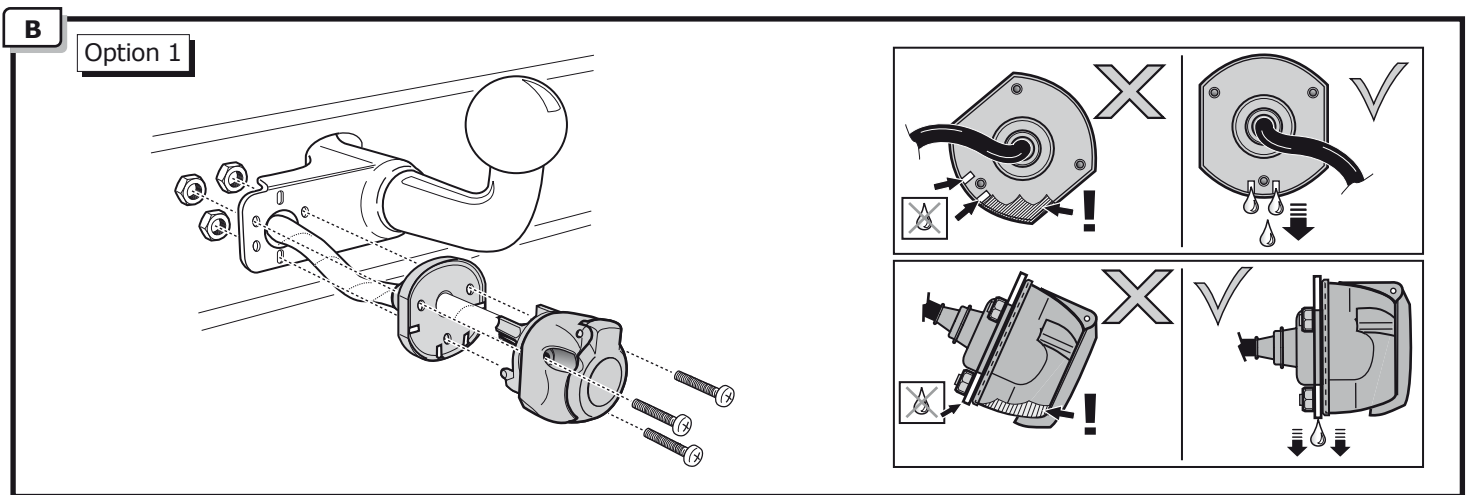
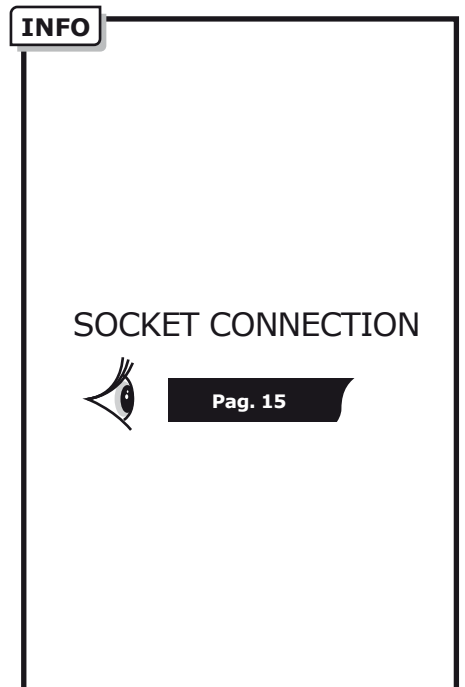
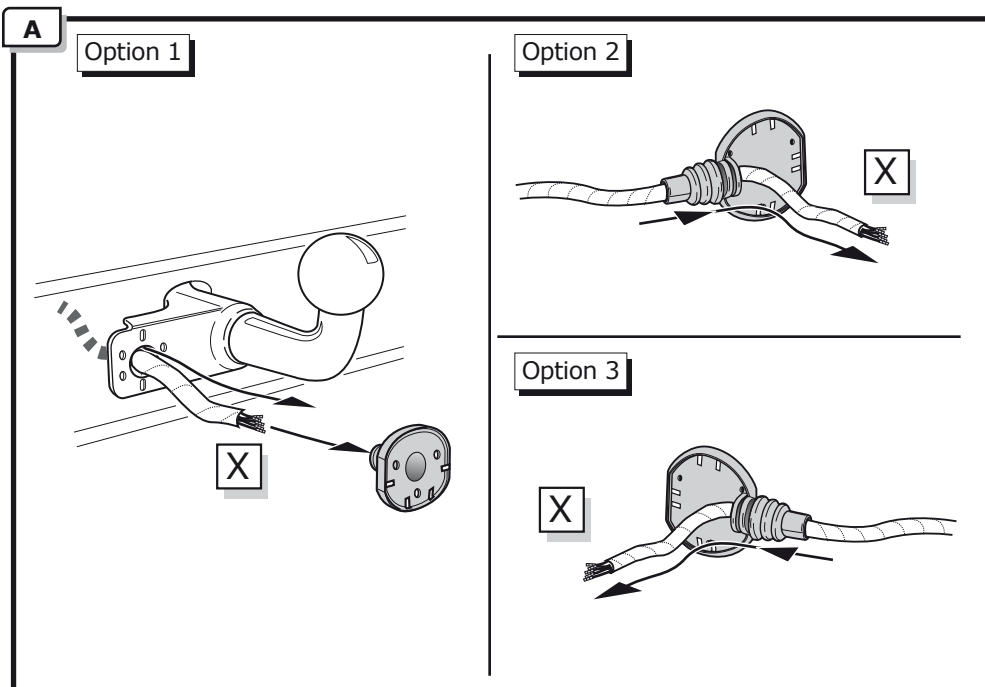


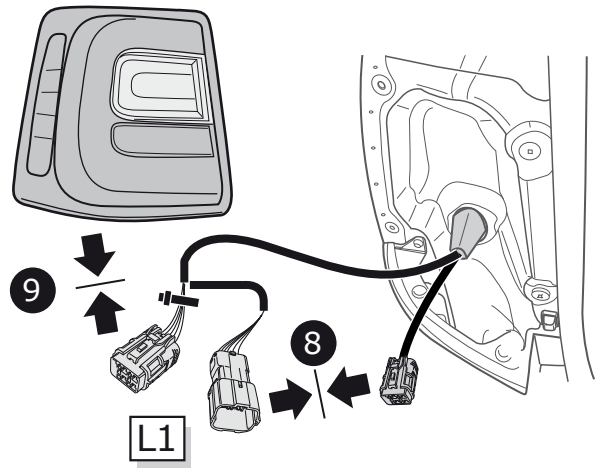
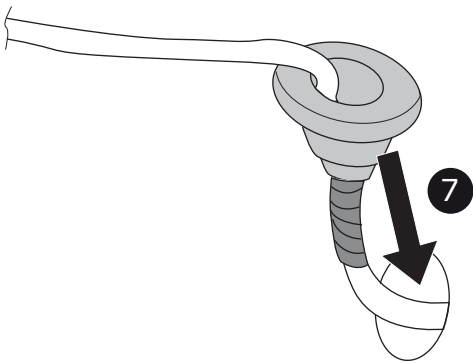
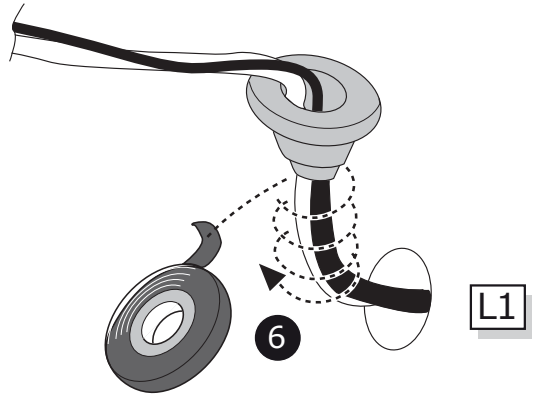
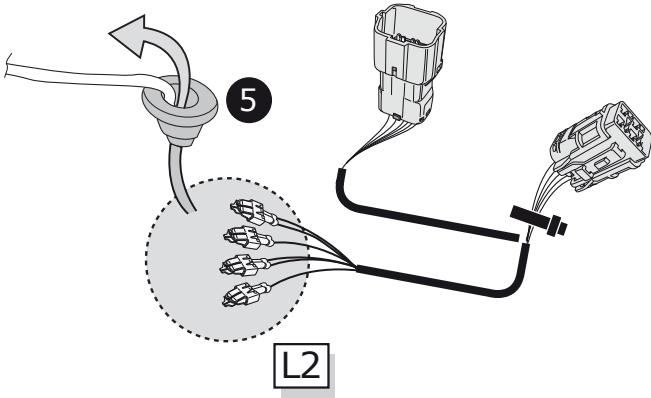
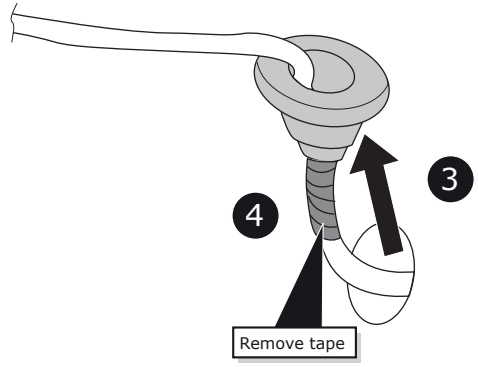
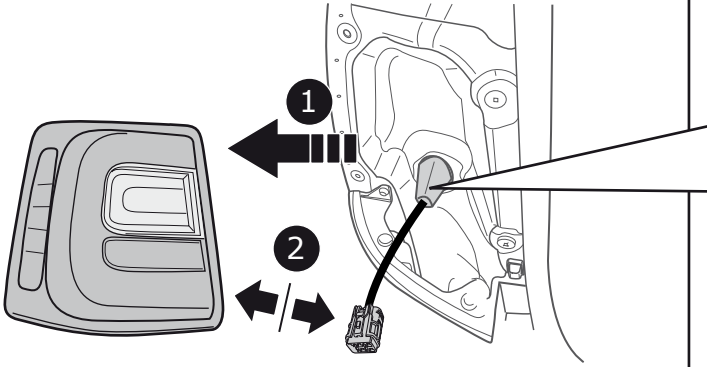
5

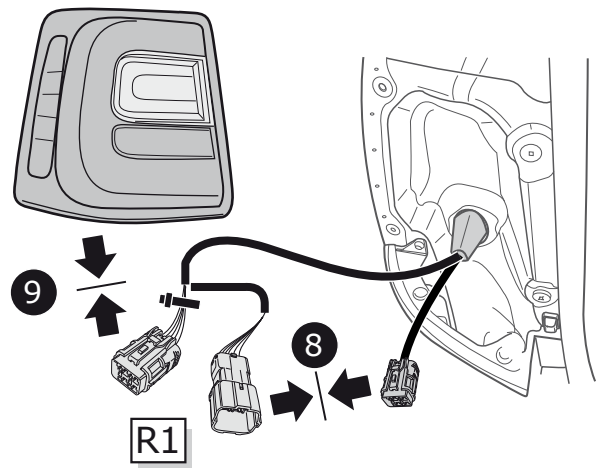
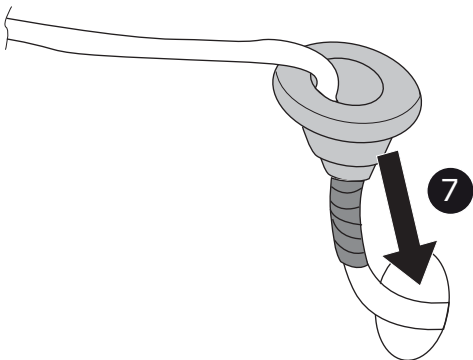
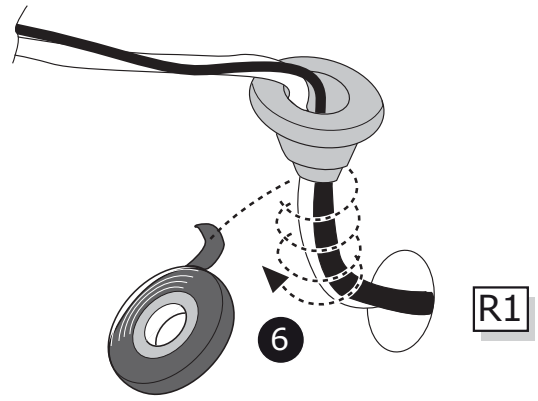
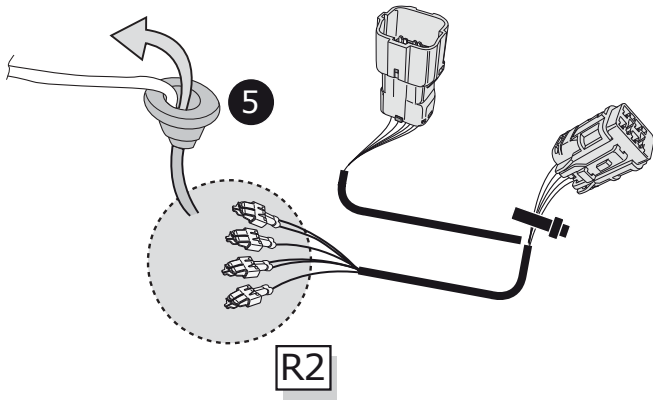
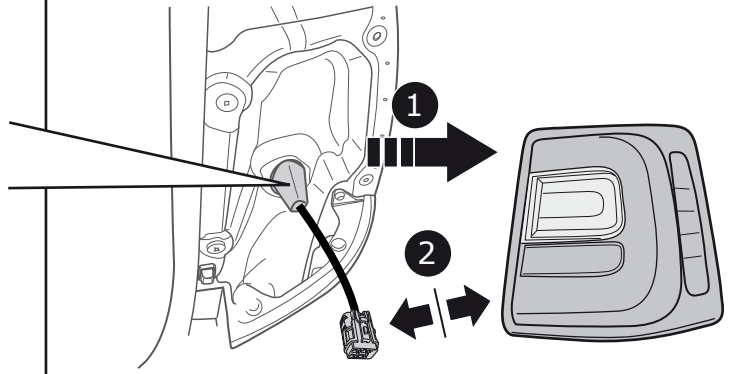
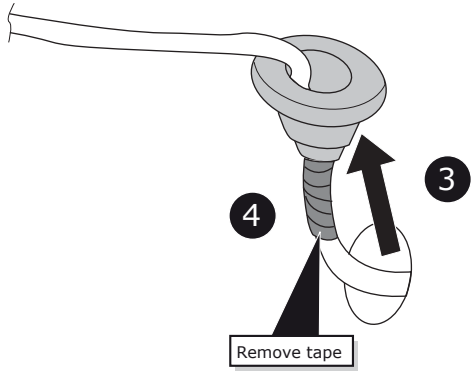


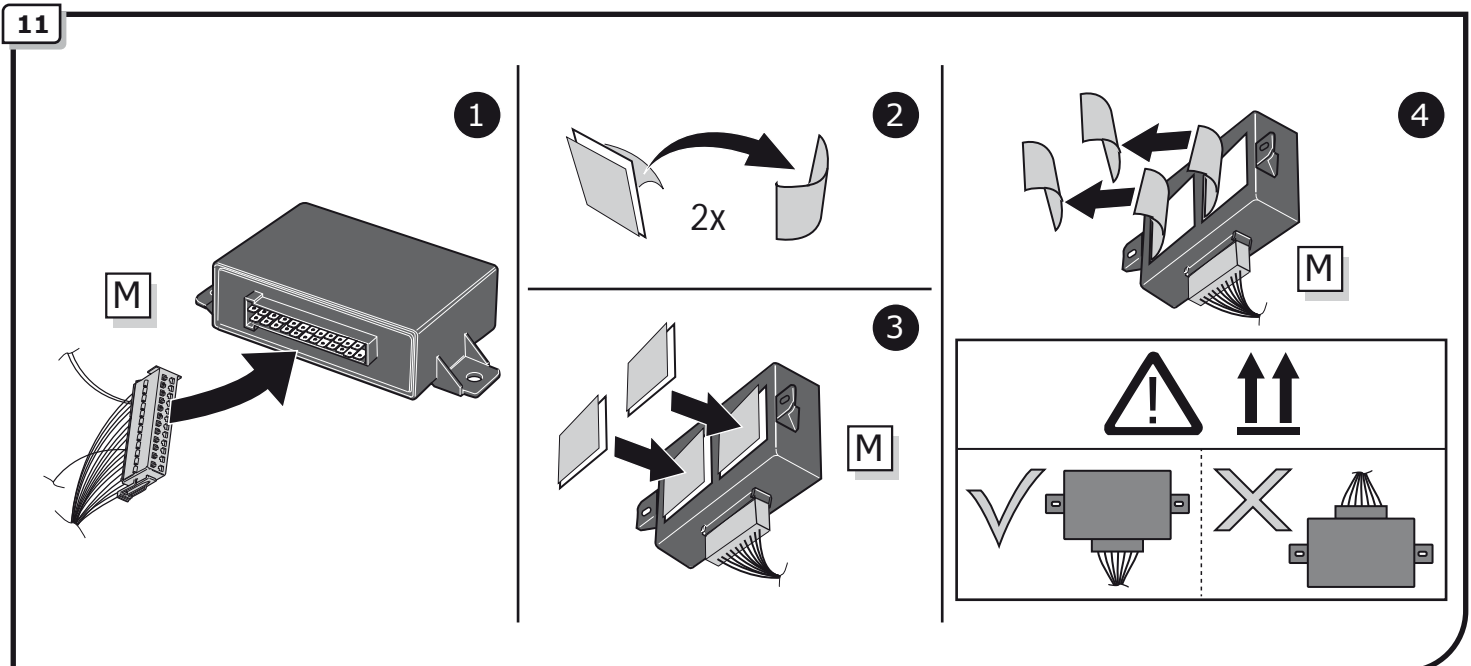
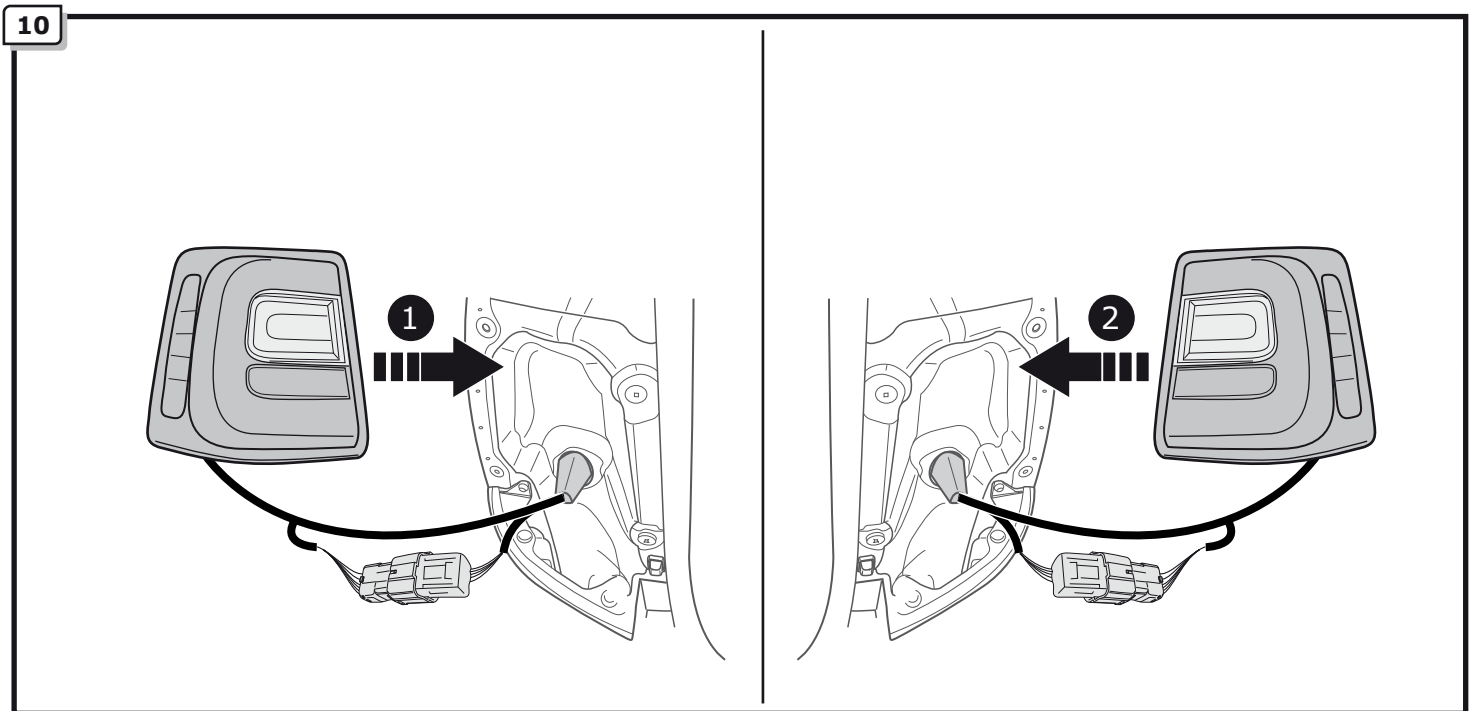
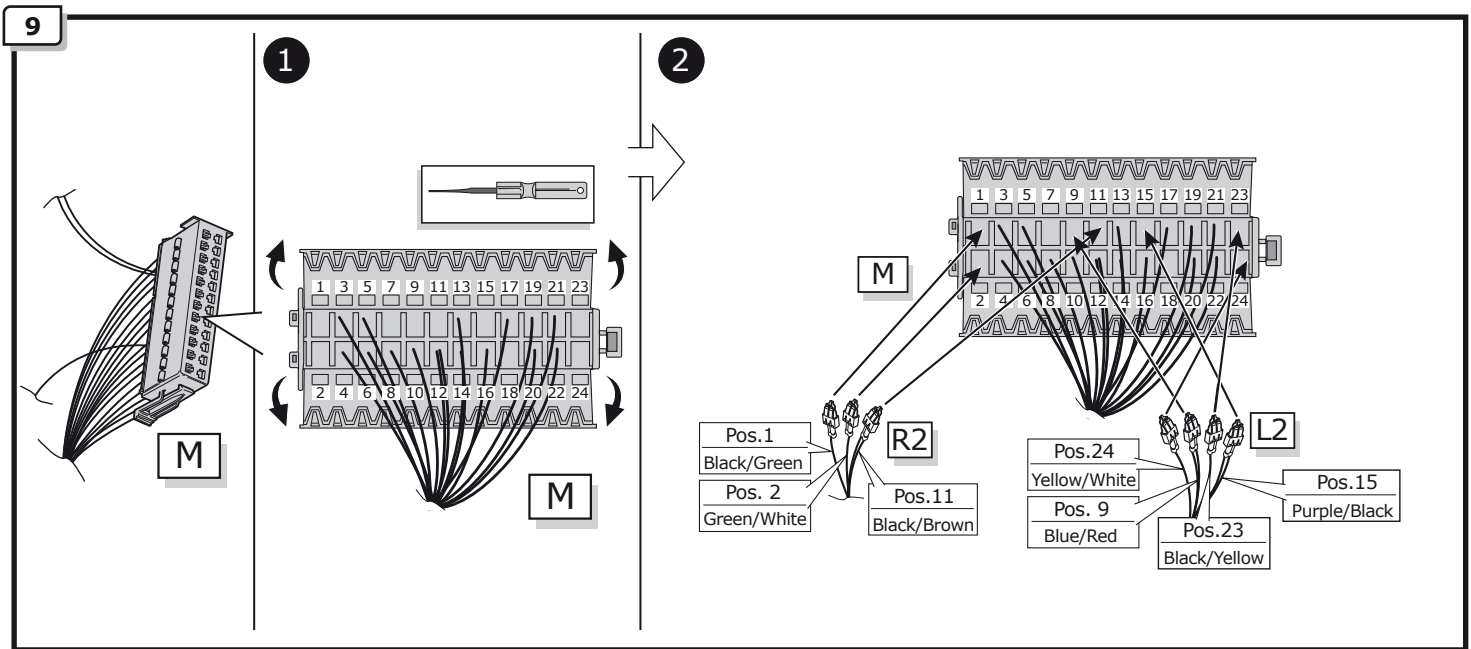
6





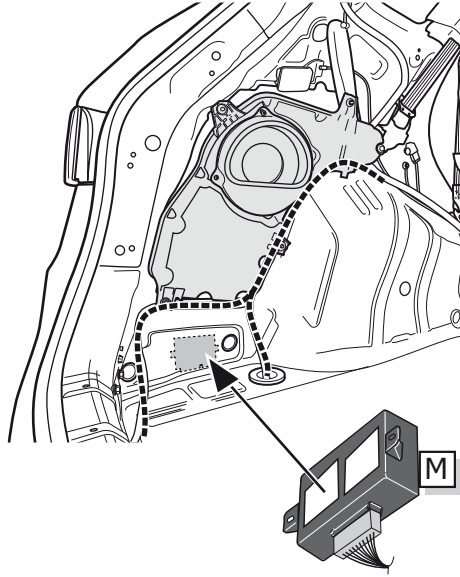
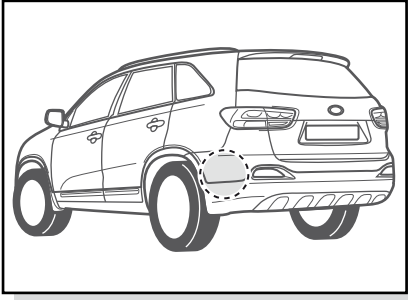






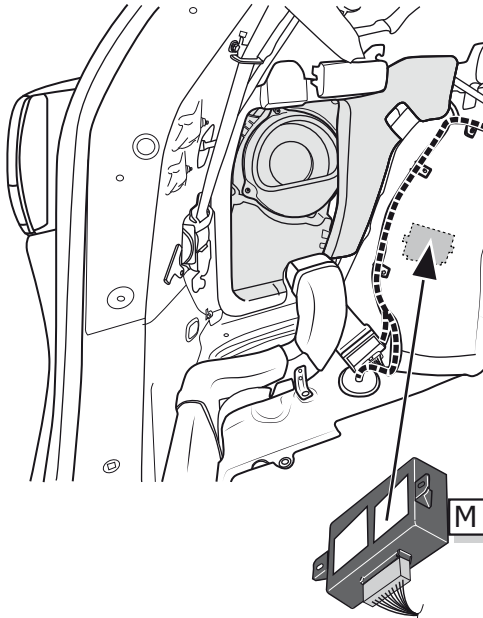
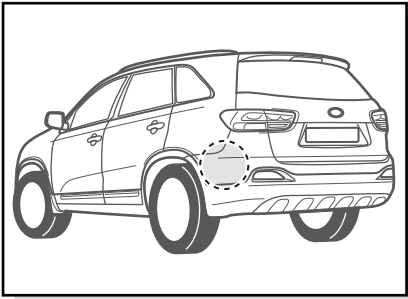
12

5 Seats

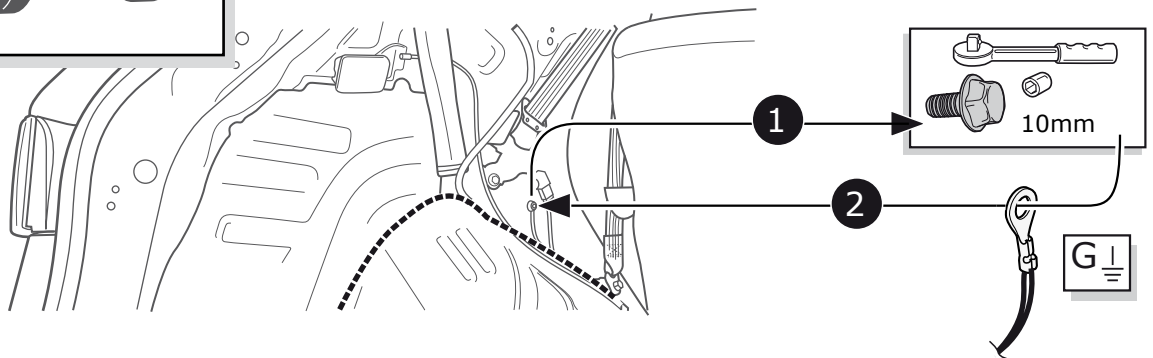
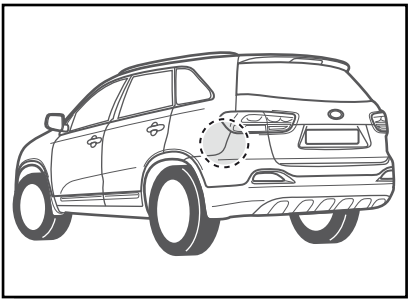


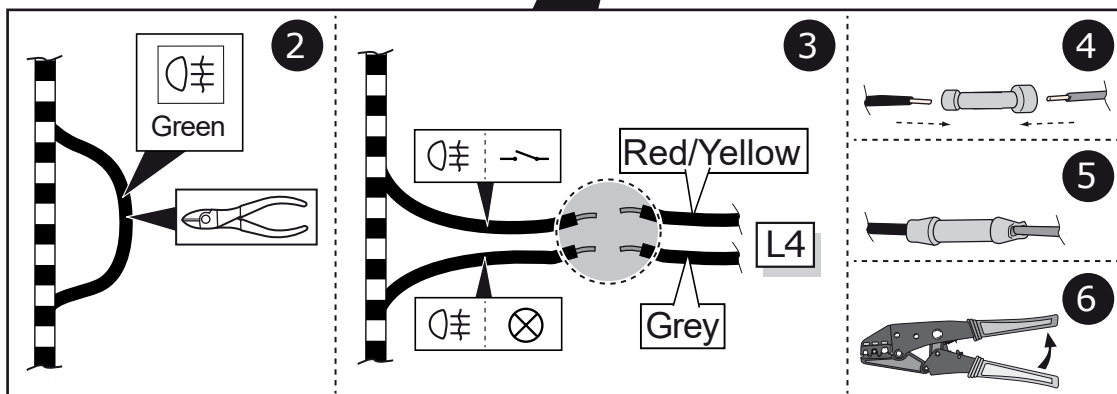
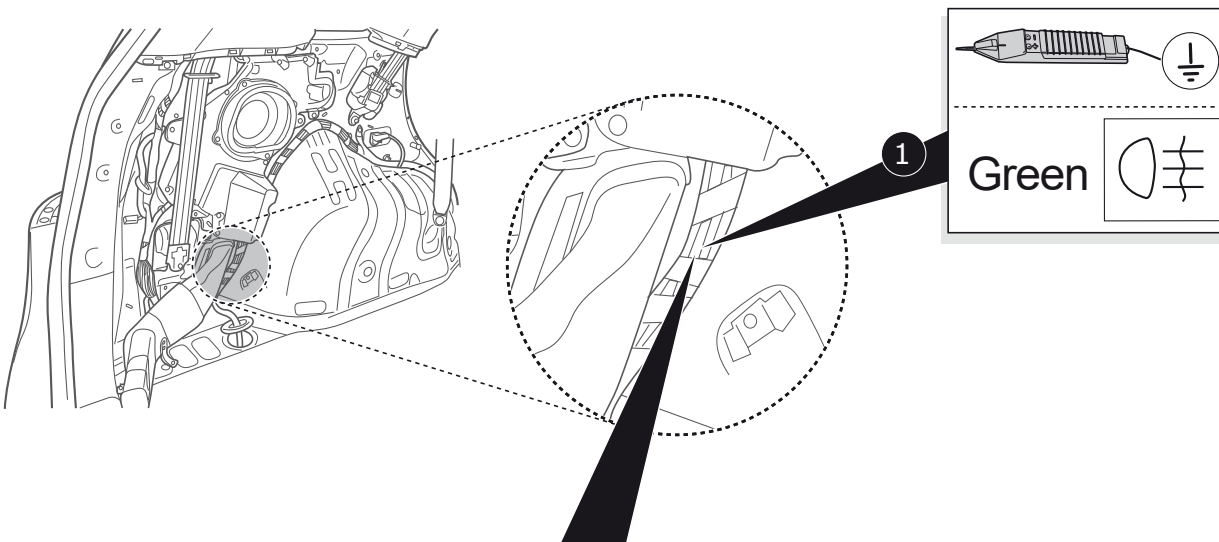
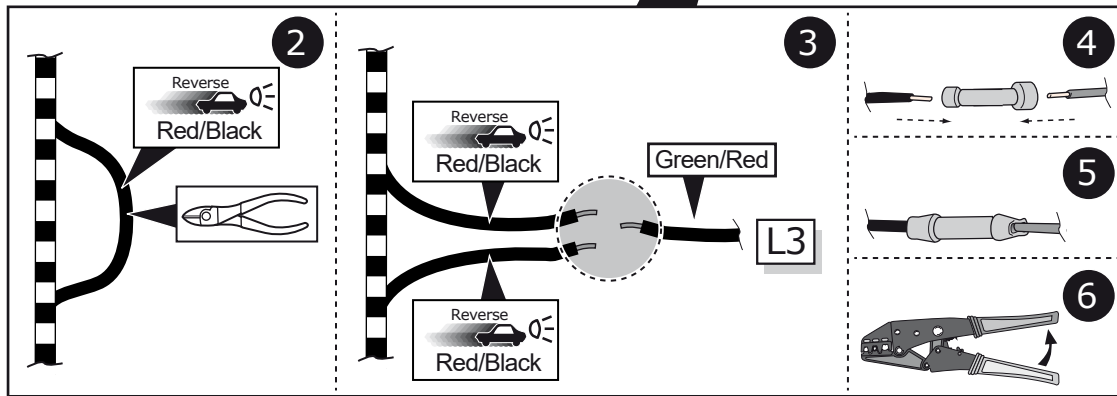
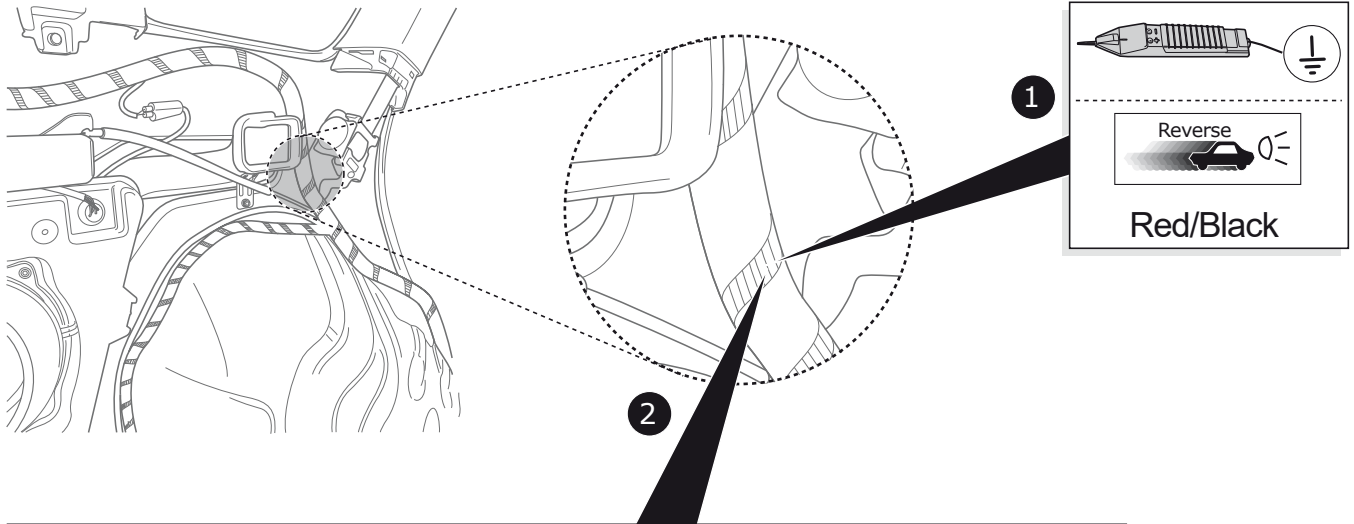
13

7 Seats

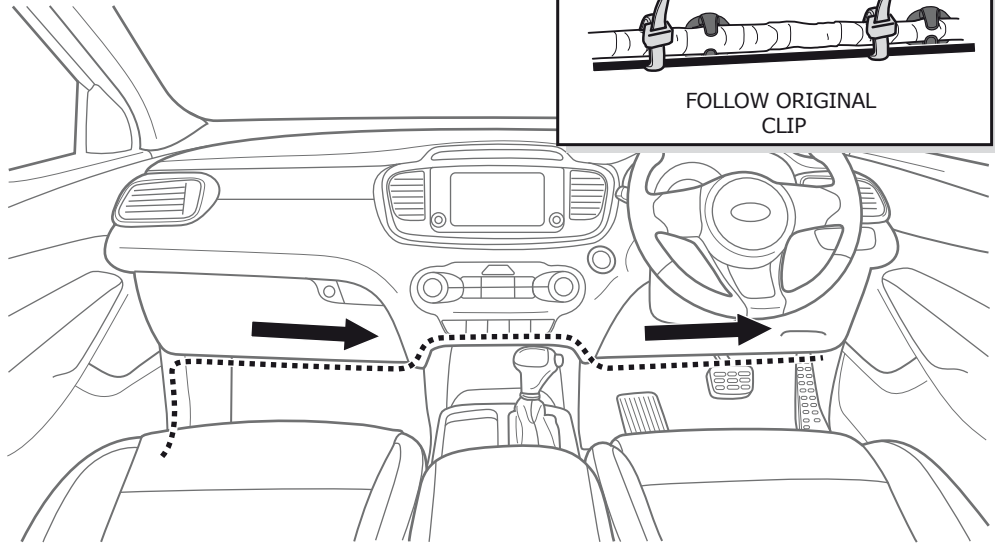
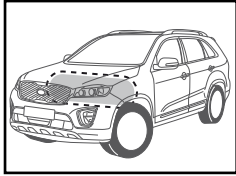


14

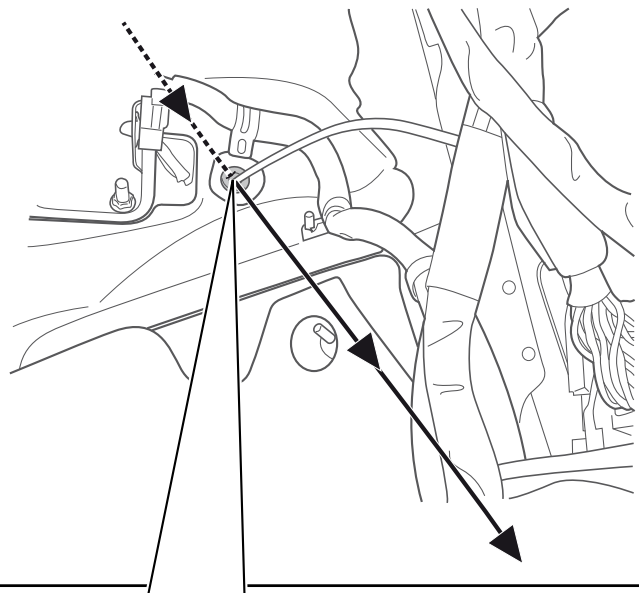
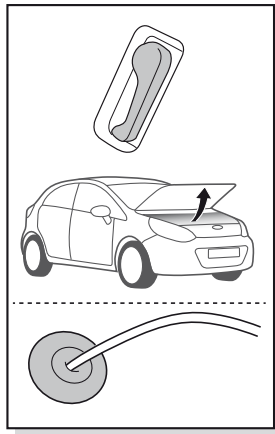
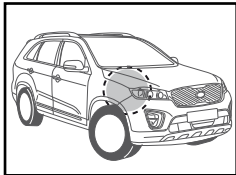




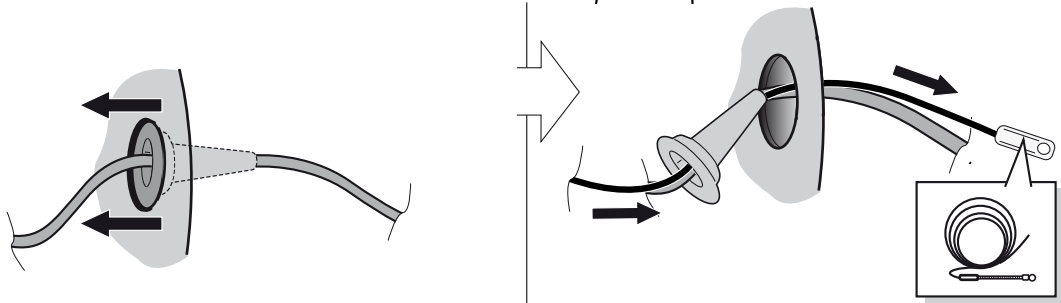
17



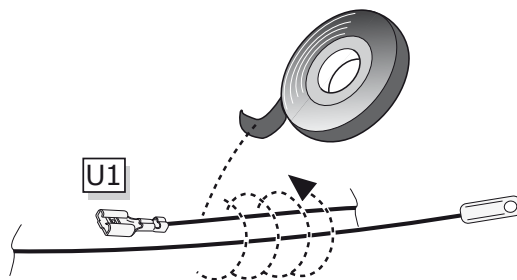
18



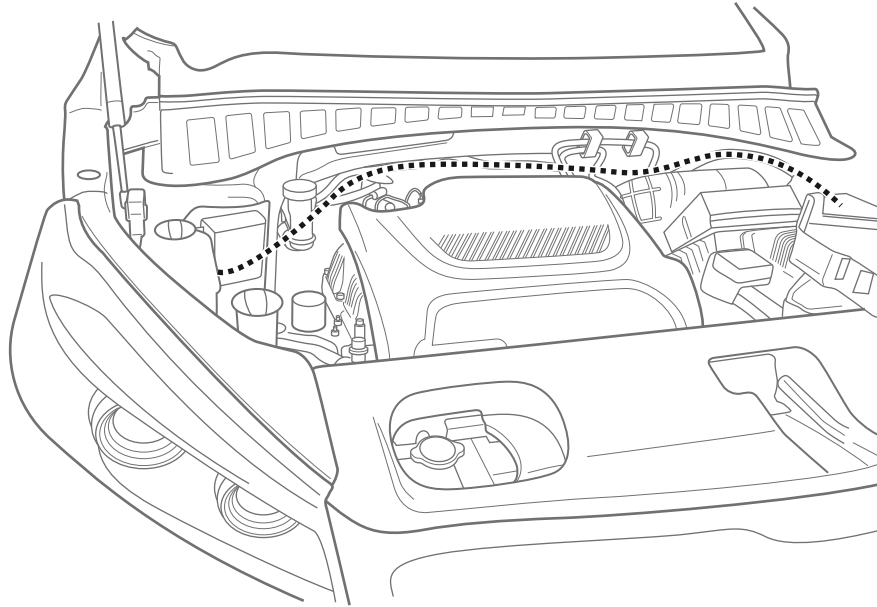
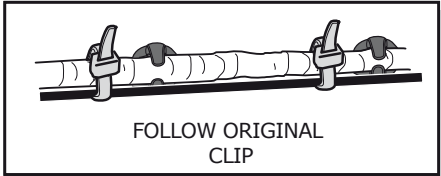
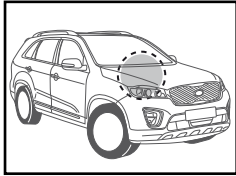
1



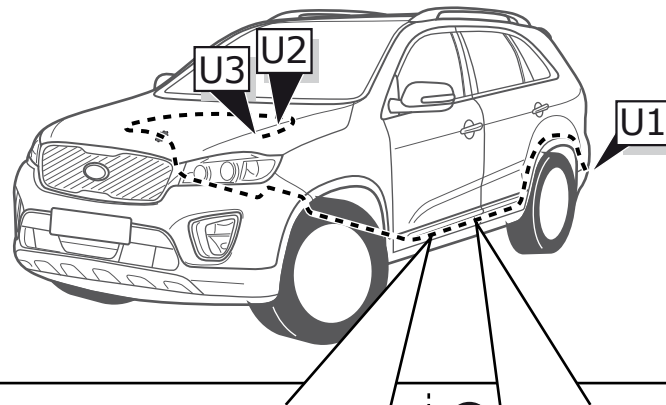
2



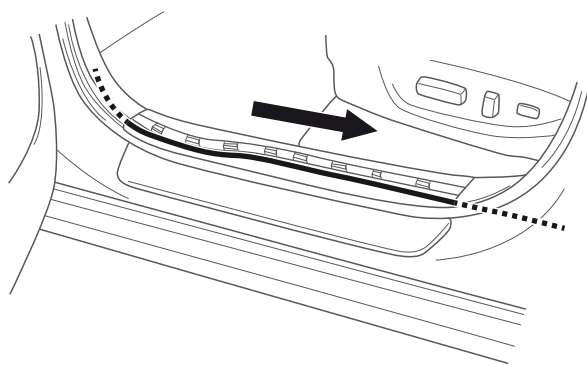
19



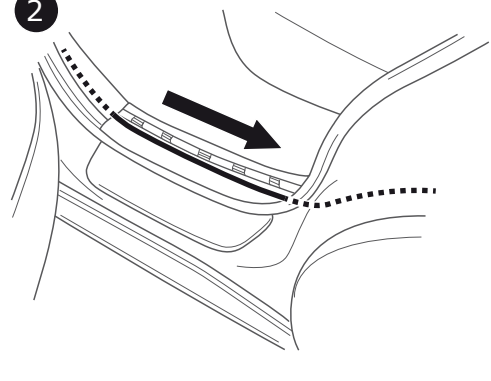
20



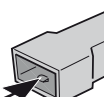
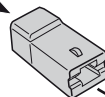
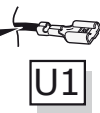
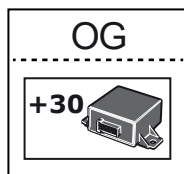
1



2

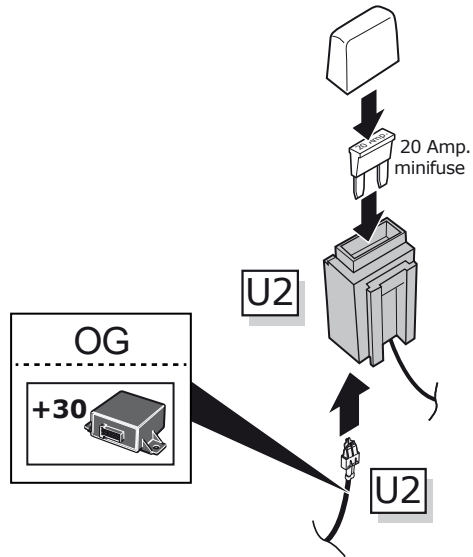


21

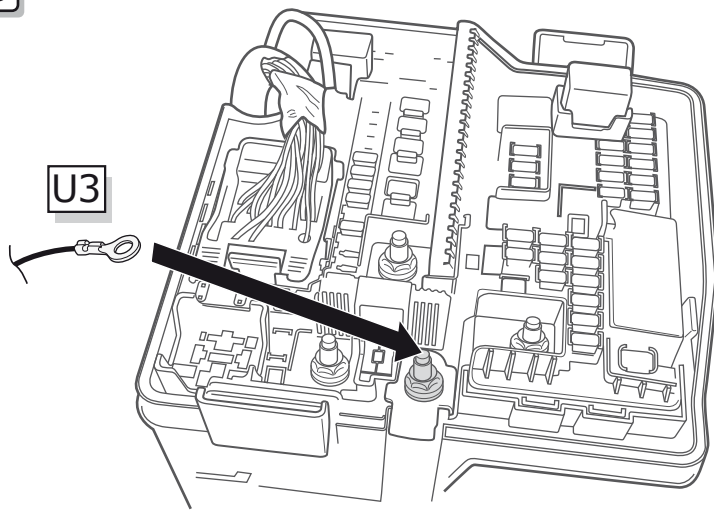


U1

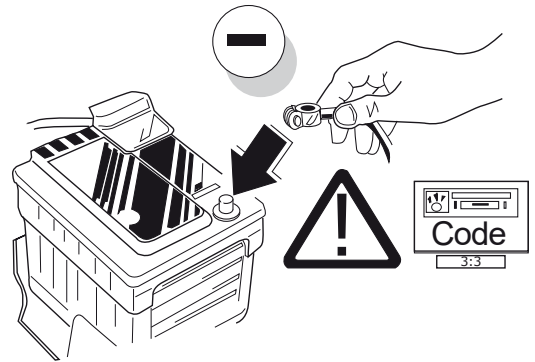
22



23



24



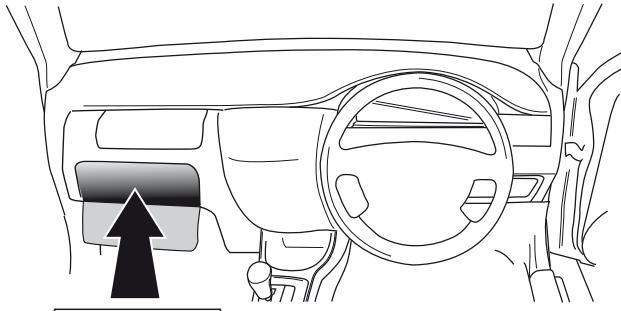
25



TEST ALL THE CIRCUITS WITH A TEST DEVICE WITH THE CORRECT POWER LOAD FOR EACH FUNCTION. A TEST DEVICE WITH LED'S CANNOT BE USED FOR THIS PURPOSE.

INFO

REINSTALL TRIM.



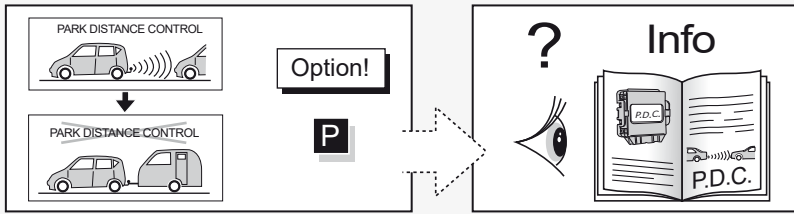
User guide



INFO

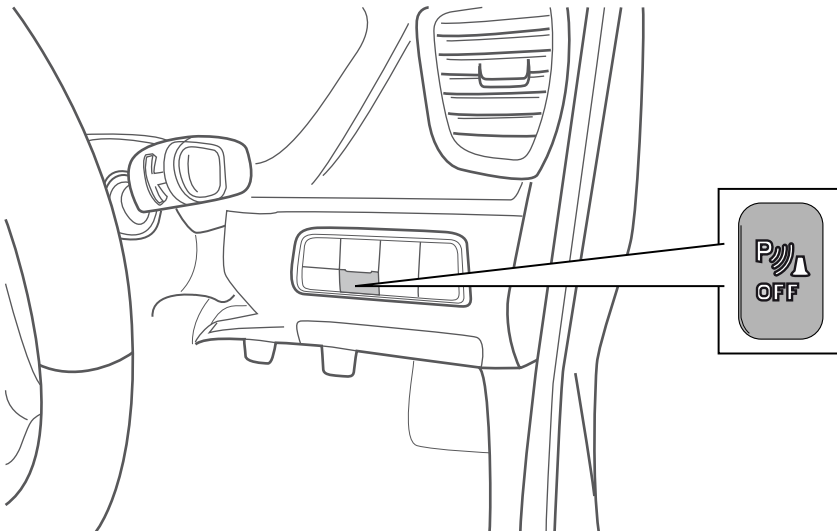
SOCKET CONNECTION

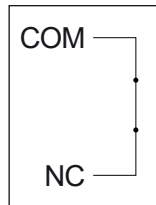
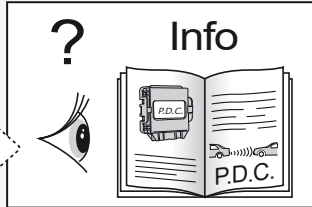
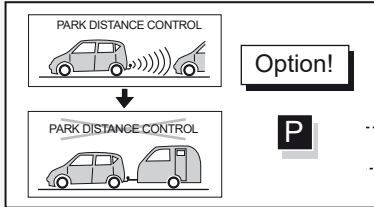
DIN/ISO 1724							
	1/L	2	3/31	4/R	5/58-R	6/54	7/58-L
Pmax	21W	2x21W		21W	52W	3x21W	52W
Colour	Yellow	Blue	White	Green	Brown	Red	Black



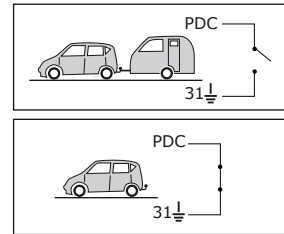
Option 1

For OEM installed PDC systems





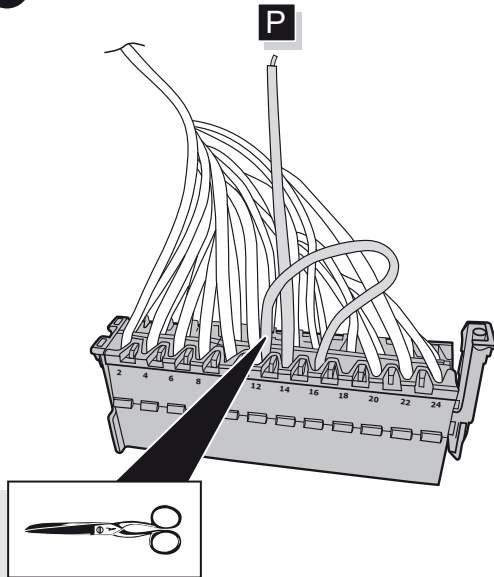
Normally closed



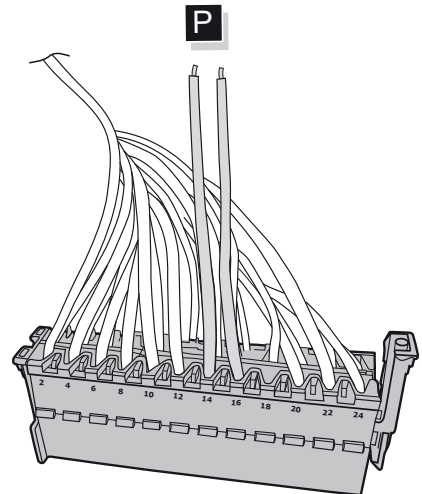
Option 2

For aftermarket installed PDC systems

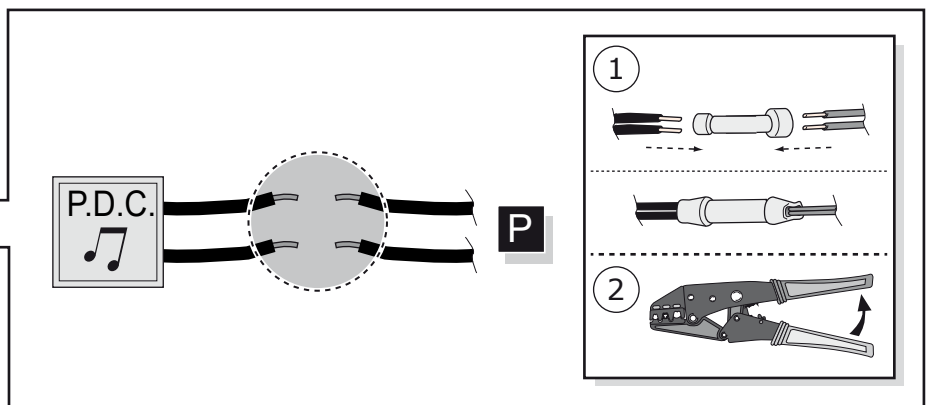
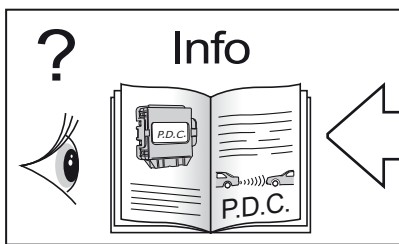
1



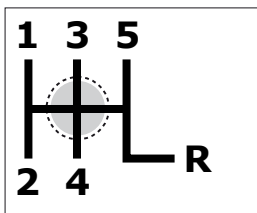
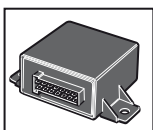
2



3

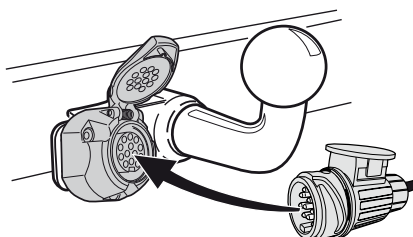


1

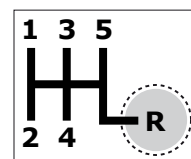


Neutral

2



3



4

TEST