

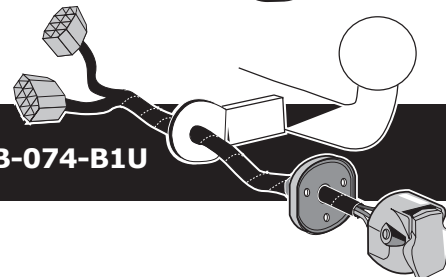
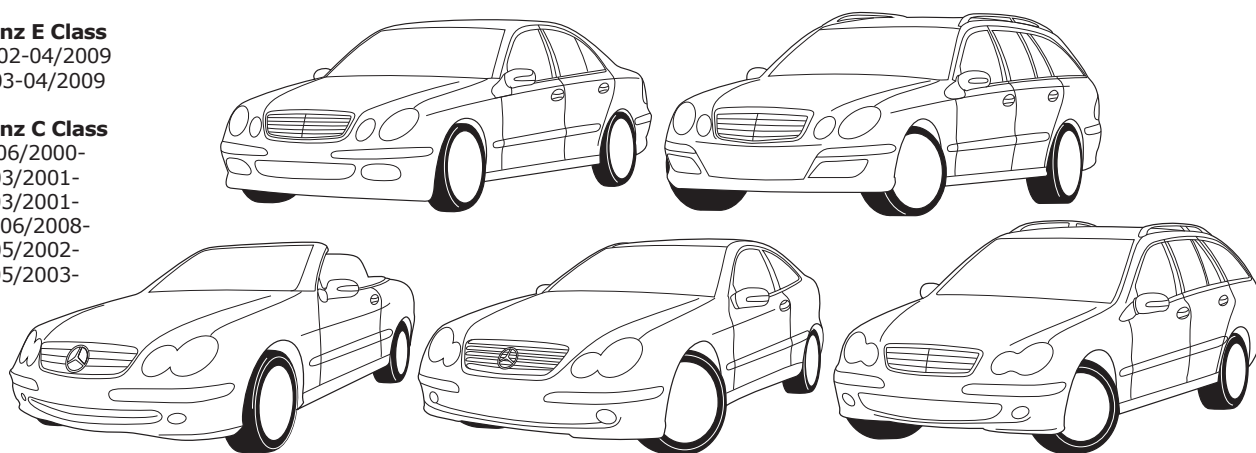


Mercedes Benz E Class

W211 03/2002-04/2009
S211 03/2003-04/2009

Mercedes Benz C Class

Class W203 06/2000-
Class C203 03/2001-
Class S203 03/2001-
Class CL203 06/2008-
Class C209 05/2002-
Class A209 05/2003-

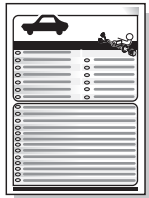
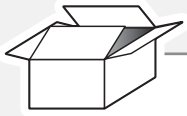


Partnr.: MB-074-B1U

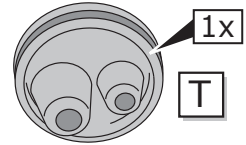
- Fitting instructions electric wiring kit tow bar with 12-N socket up to DIN/ISO Norm 1724.
- We would expressly point out that assembly not carried out properly by a competent installer will result in cancellation of any right to damage compensation, in particular those arising by virtue of the product liability act.
- Contents of these kits and their fitting manuals are subject to alteration without notice, please ensure that these instructions are read and fully understood before commencing installation.
- Do not overload circuits; the maximum loads per connection are detailed in this manual.
- Attention! Before Installation, please read this manual carefully and inform your customer to consult the vehicle owners manual to check for any vehicle modifications required before towing.
- In the event of functional problems, troubleshooting must be limited to about 0.5 hours, contact the technical support:
ukts@ecs-electronics.com / 07440 202 052.



Part list



G



1x

T

L2

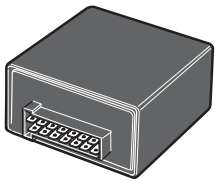


M



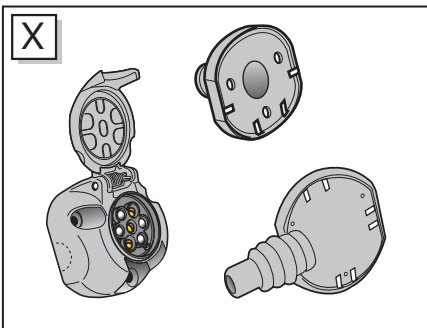
1x

L1

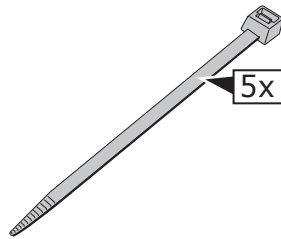


M

X



X



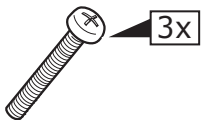
5x

UN-243-YZ

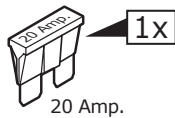
Optional reverse lamp pre-wire extension included



Page 11

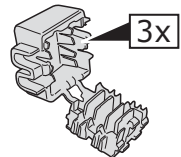


3x



1x

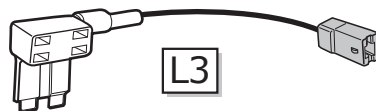
20 Amp.



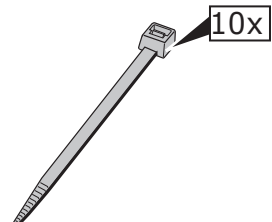
3x



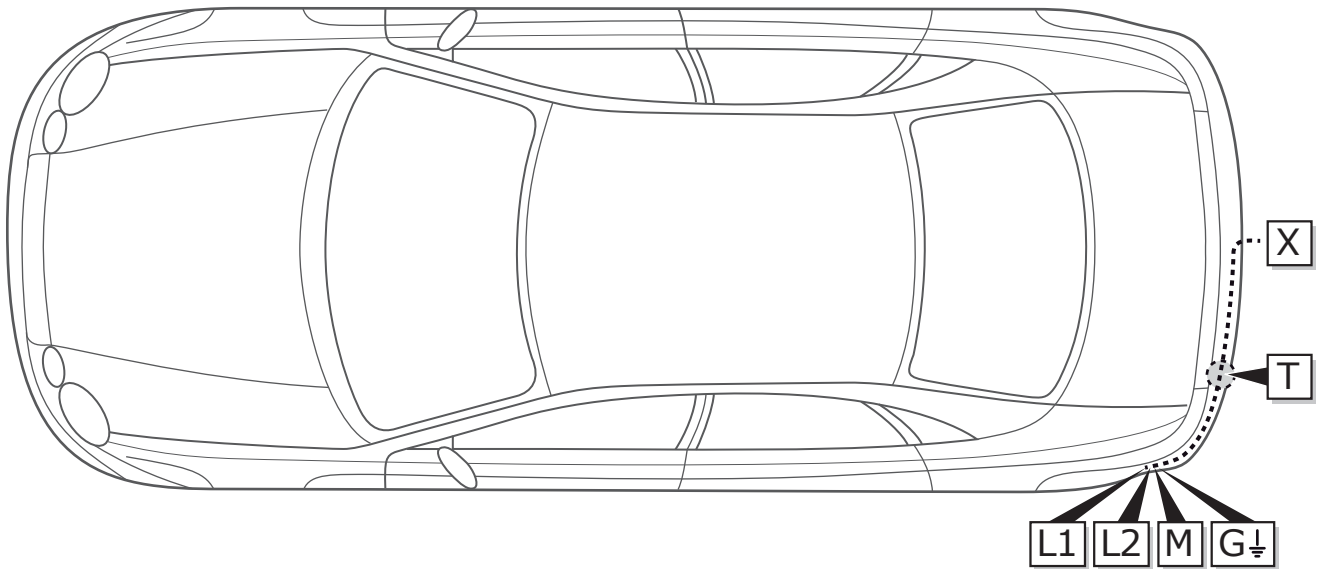
3x



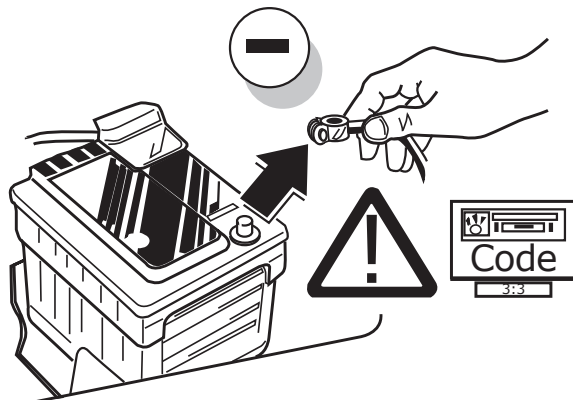
L3



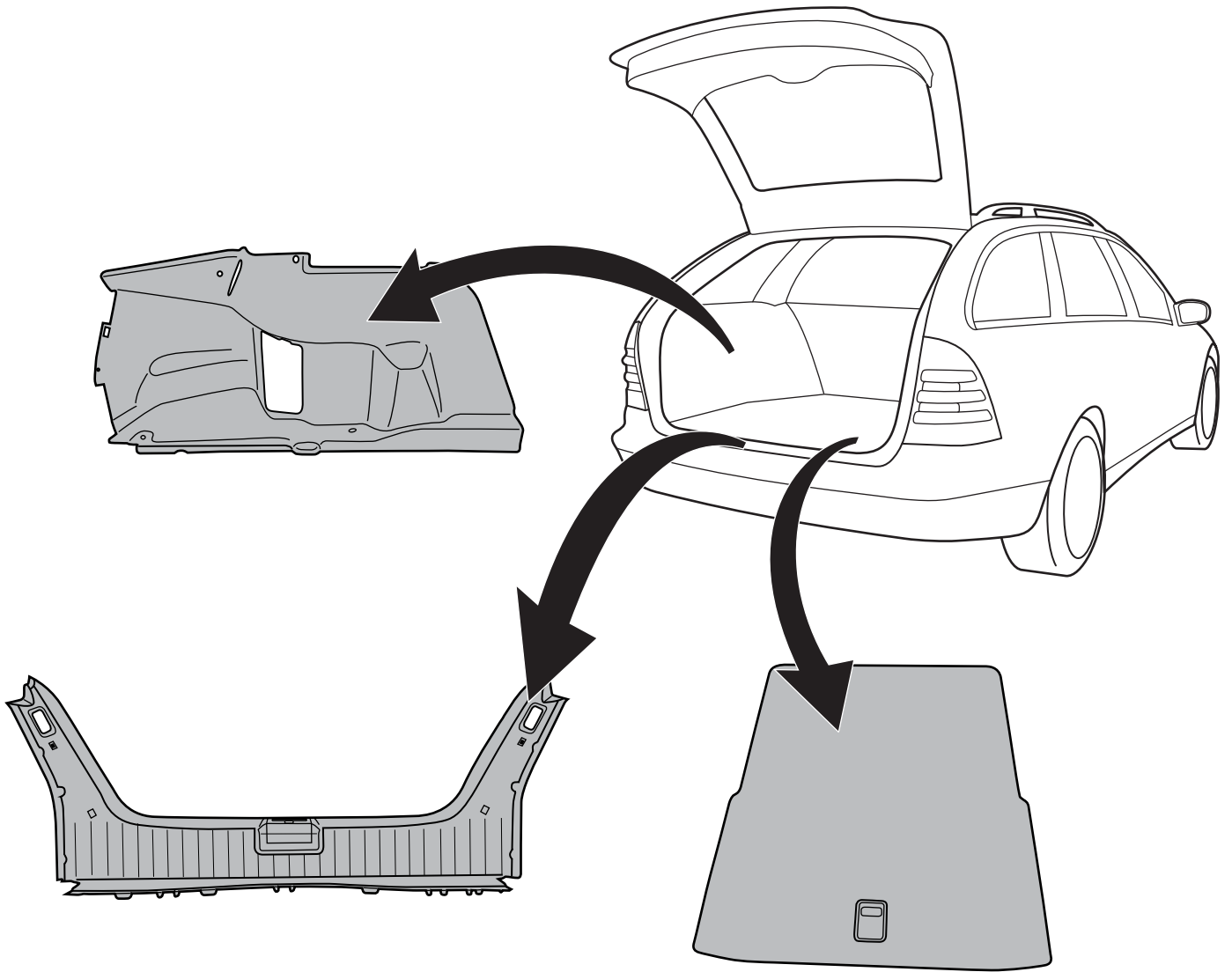
10x



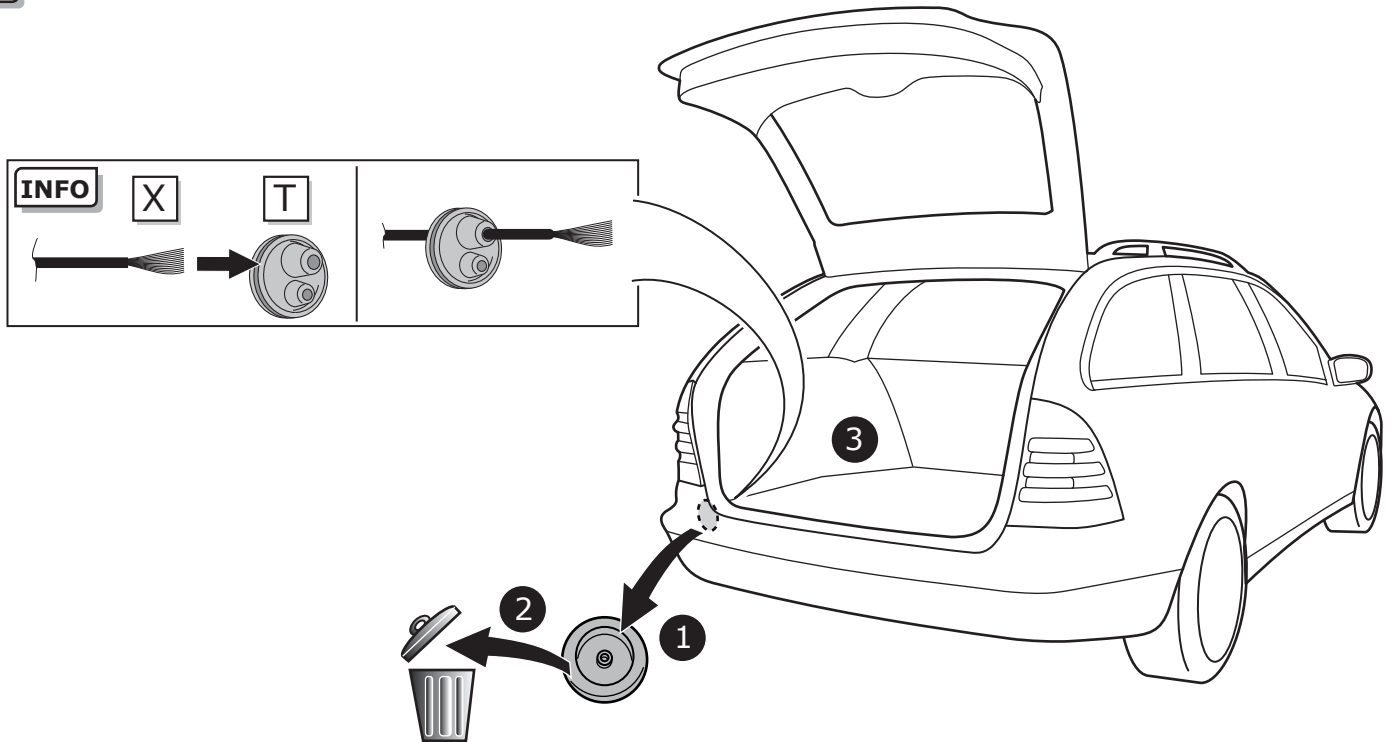
1

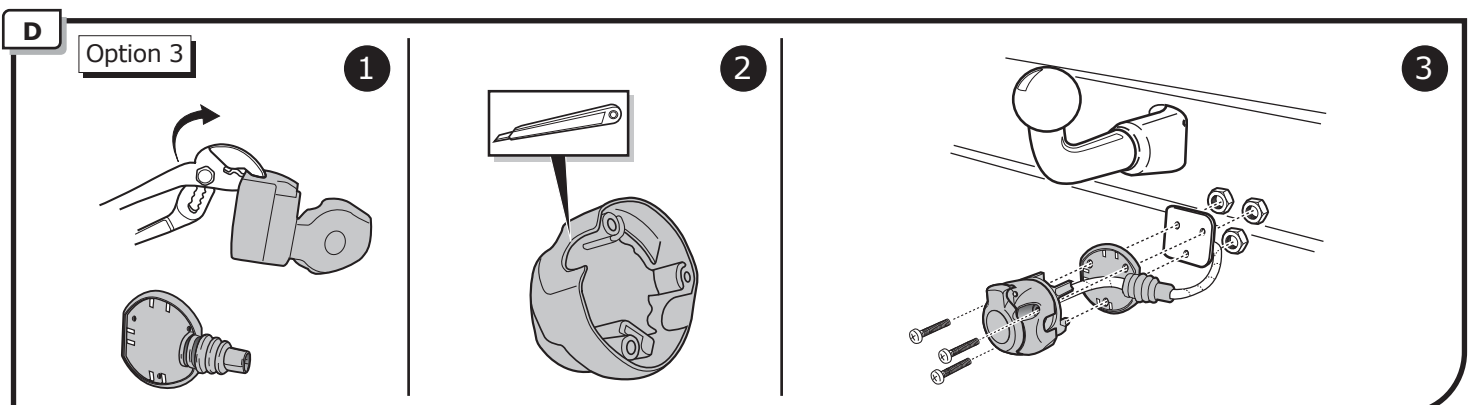
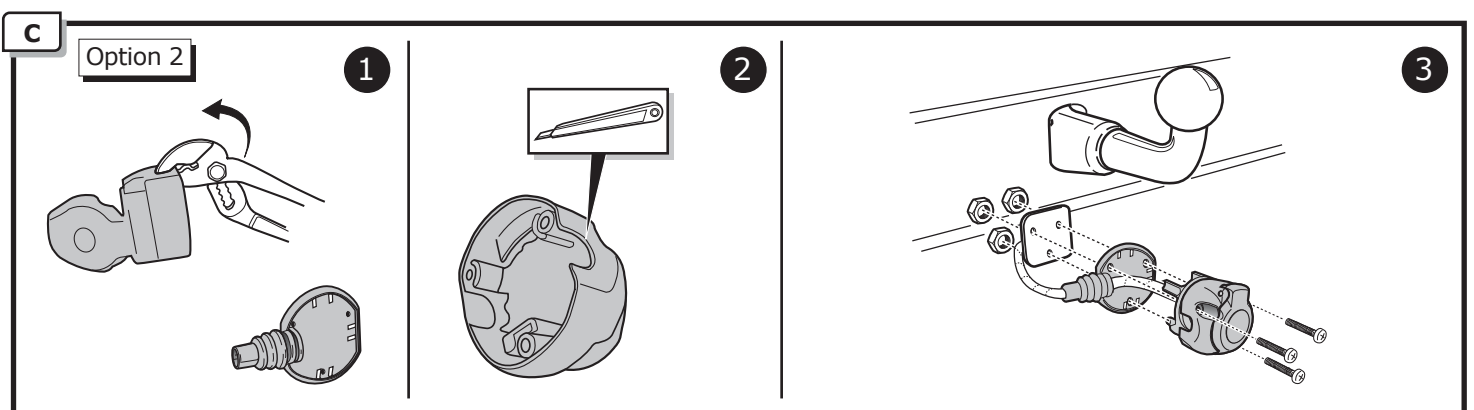
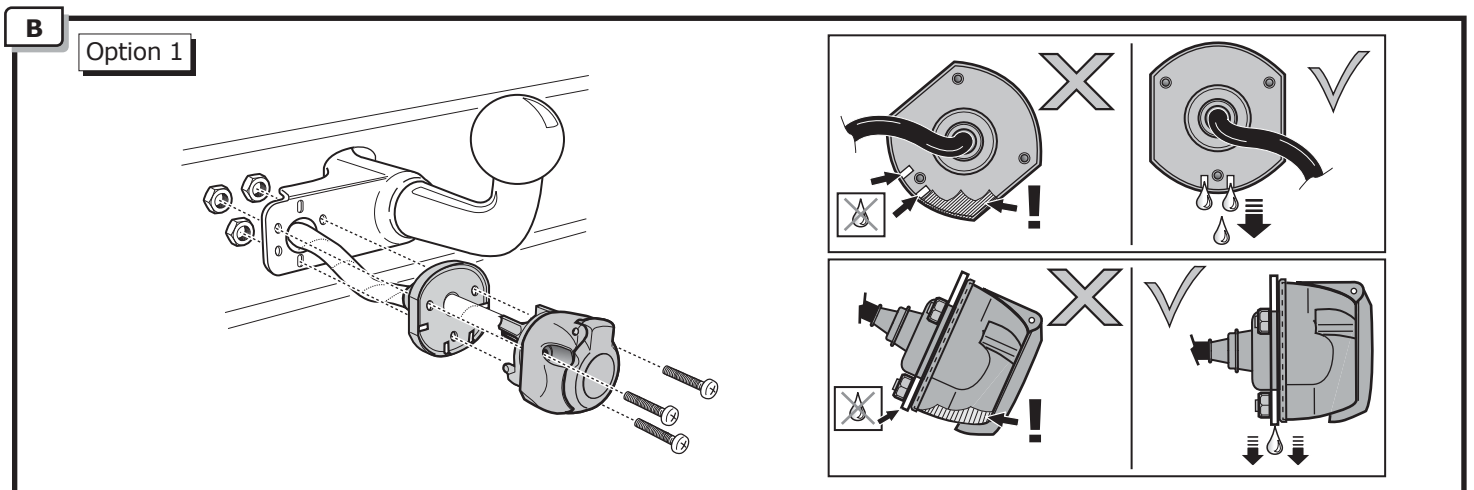
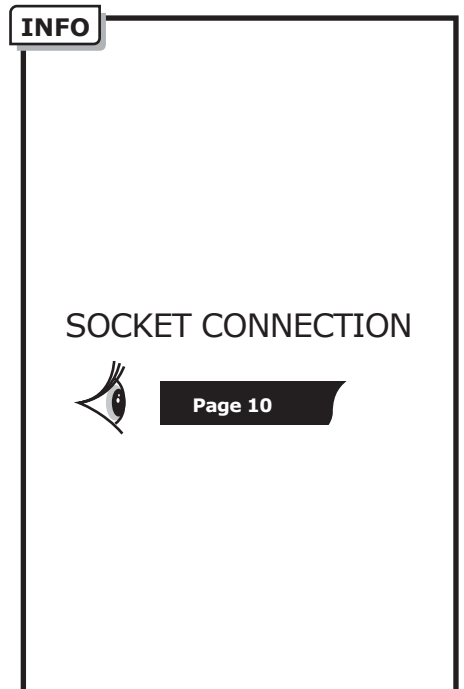
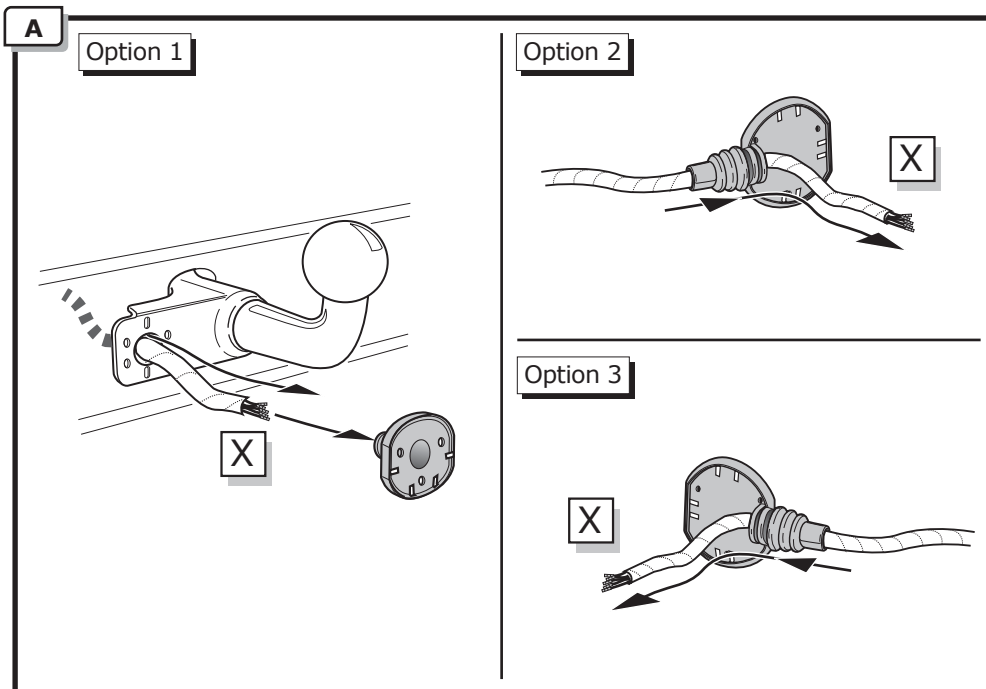


2

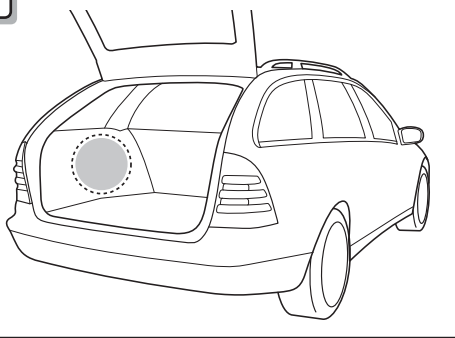


3

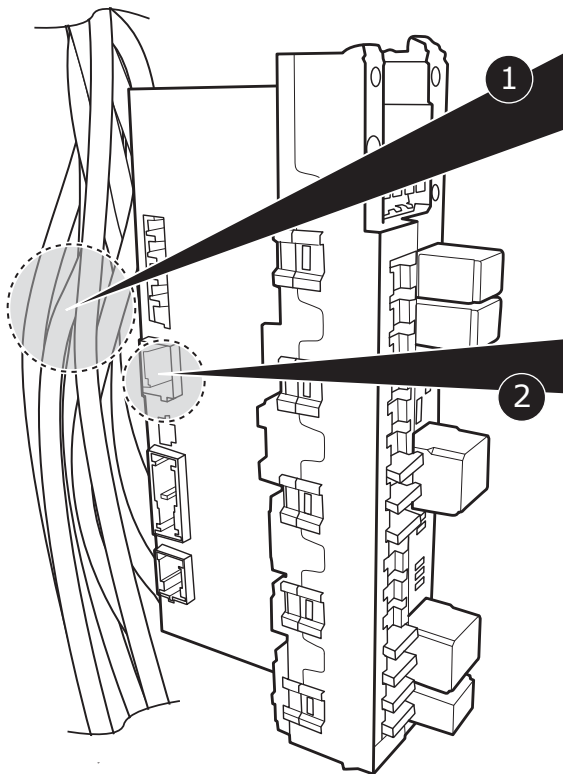




4



SAM



54 STOP ①

②

Option 1 ①

CANBUS

②

③

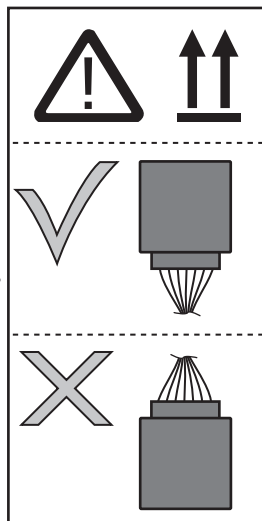
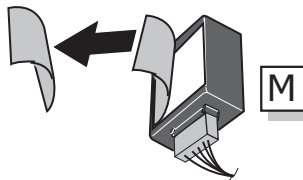
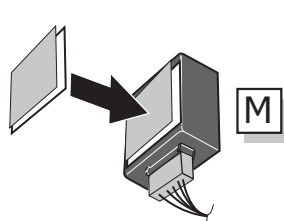
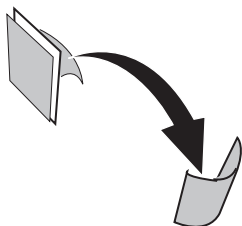
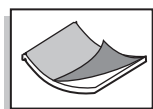
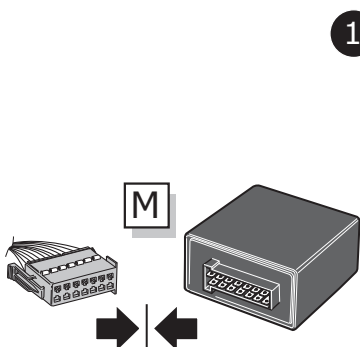
Option 2 ①

CANBUS

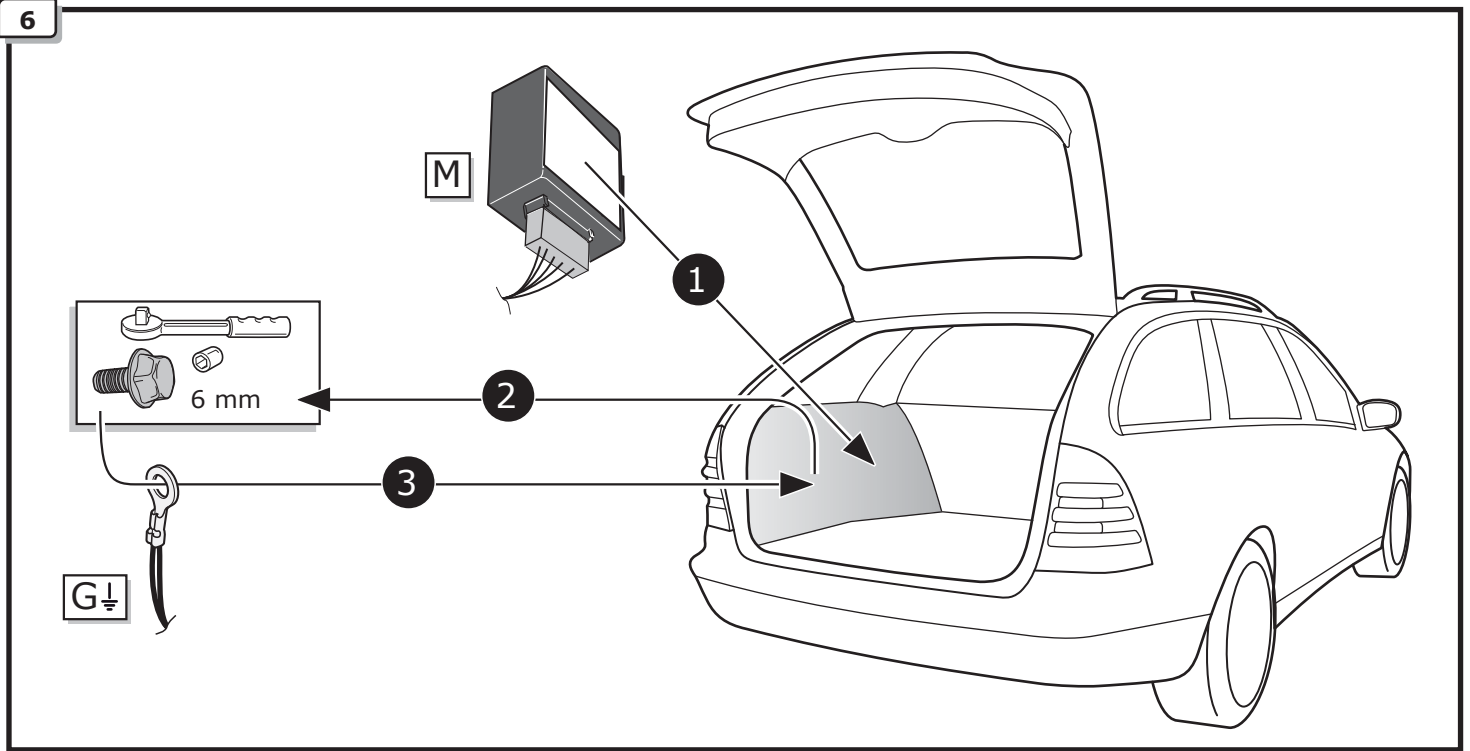
②

③

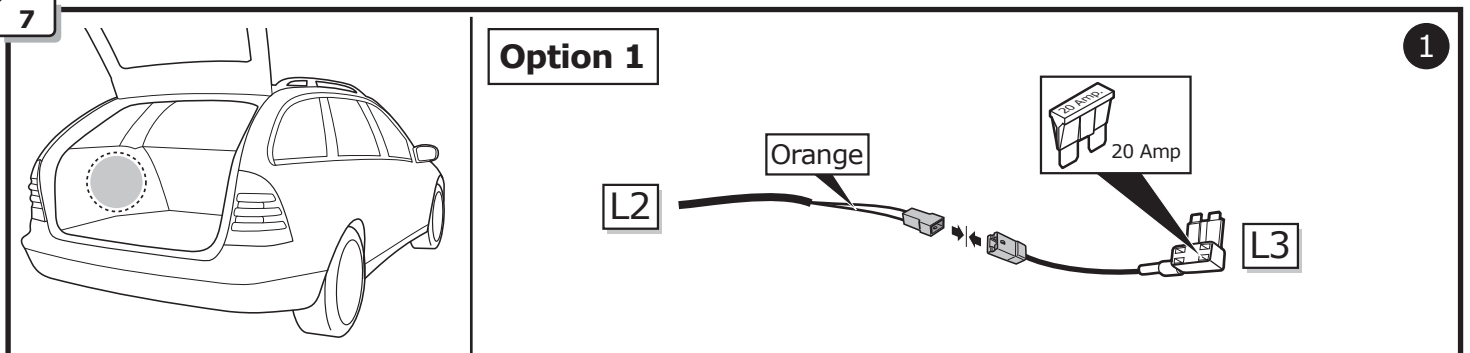
5



6



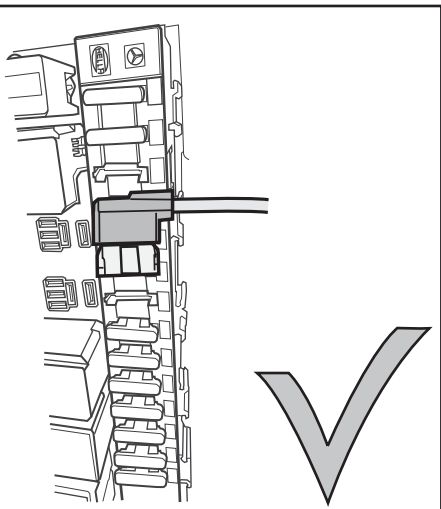
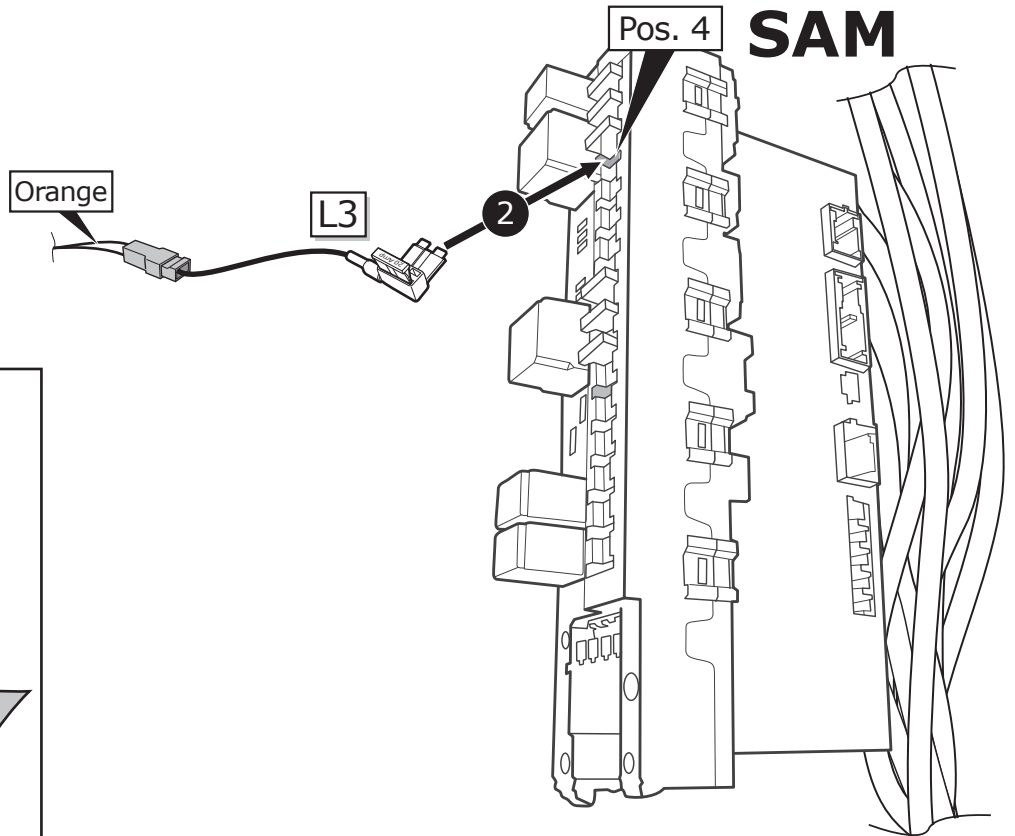
7



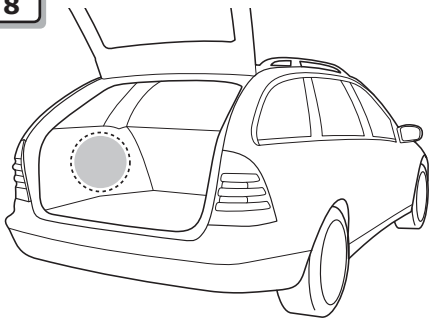
Option 1

1

!
Important!
 Please do not mount the fuse tap and its wiring output in the other direction!

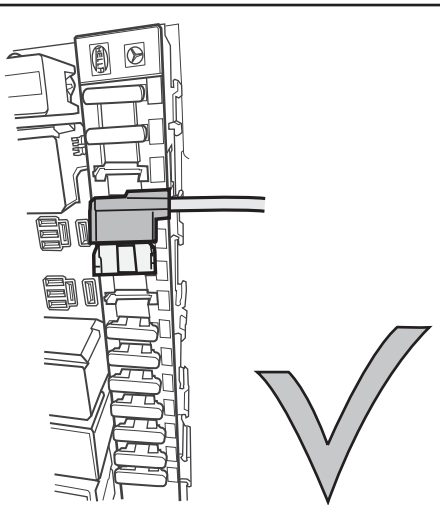
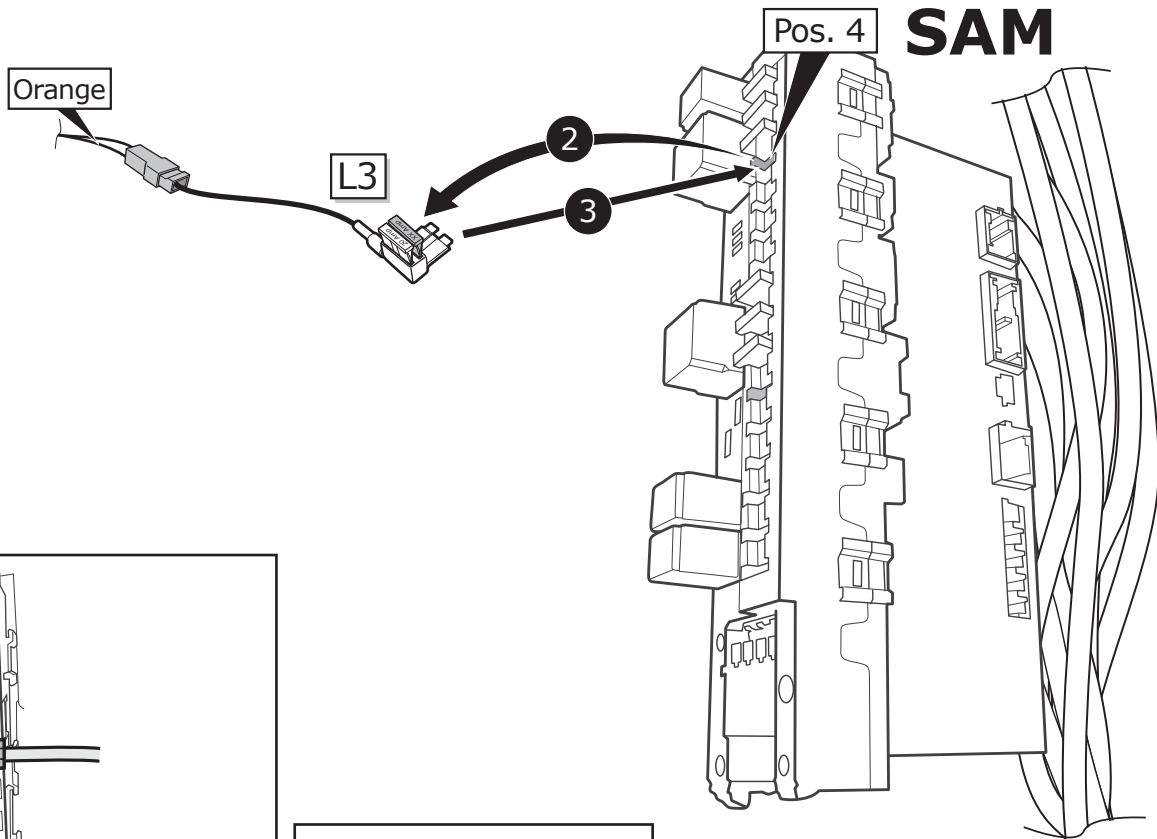
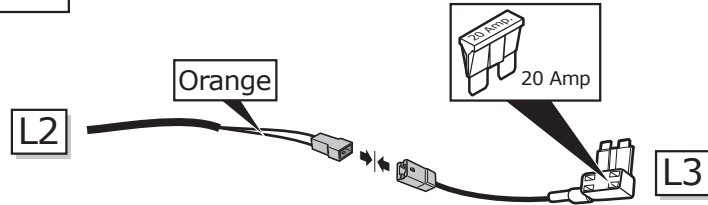


8



Option 2

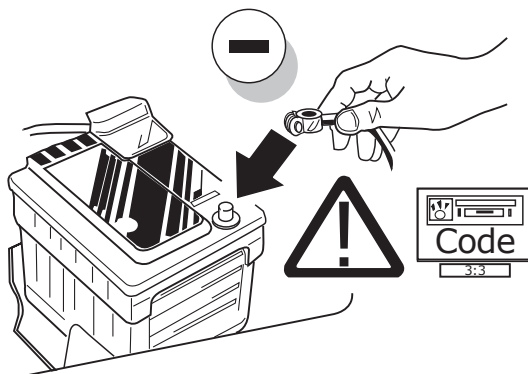
1



!

Important!
Please do not mount the fuse tap and its wiring output in the other direction!

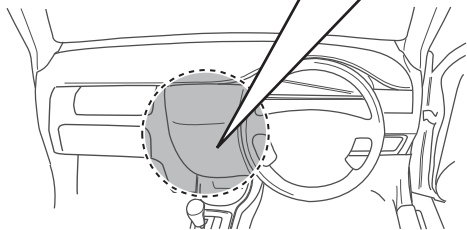
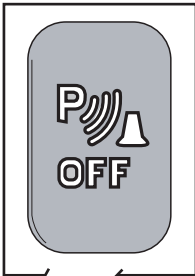
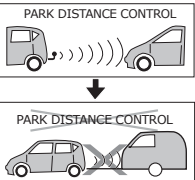
9



10

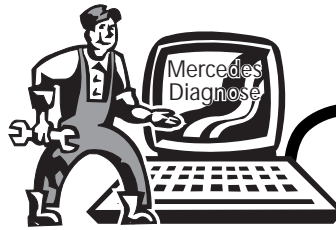
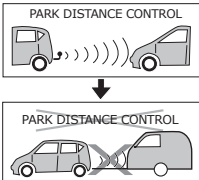
Option 1

Manual PDC



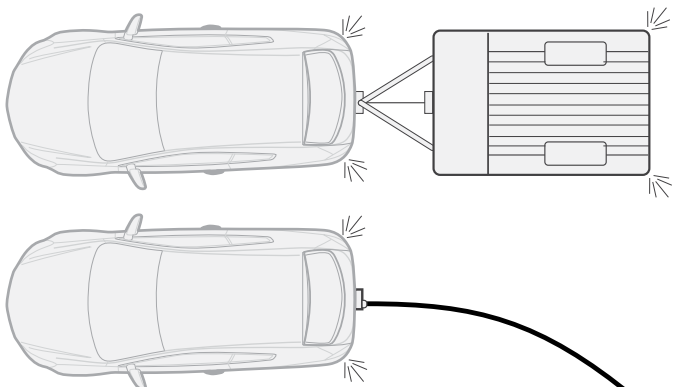
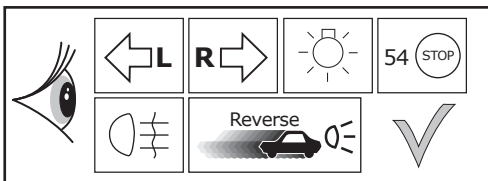
Option 2

Auto PDC

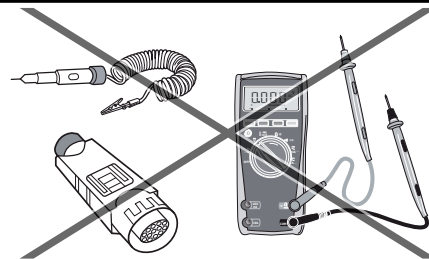


11

Functional test

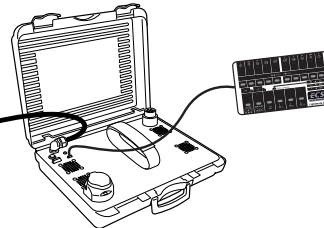


WARNING

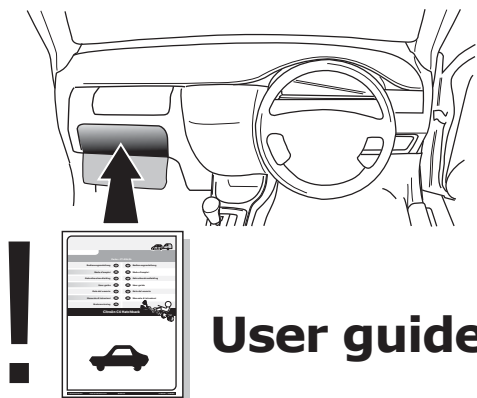


LIGHT MATE

ECS part no.
LIGHTMATE II
LIGHTMATE III



12



User guide

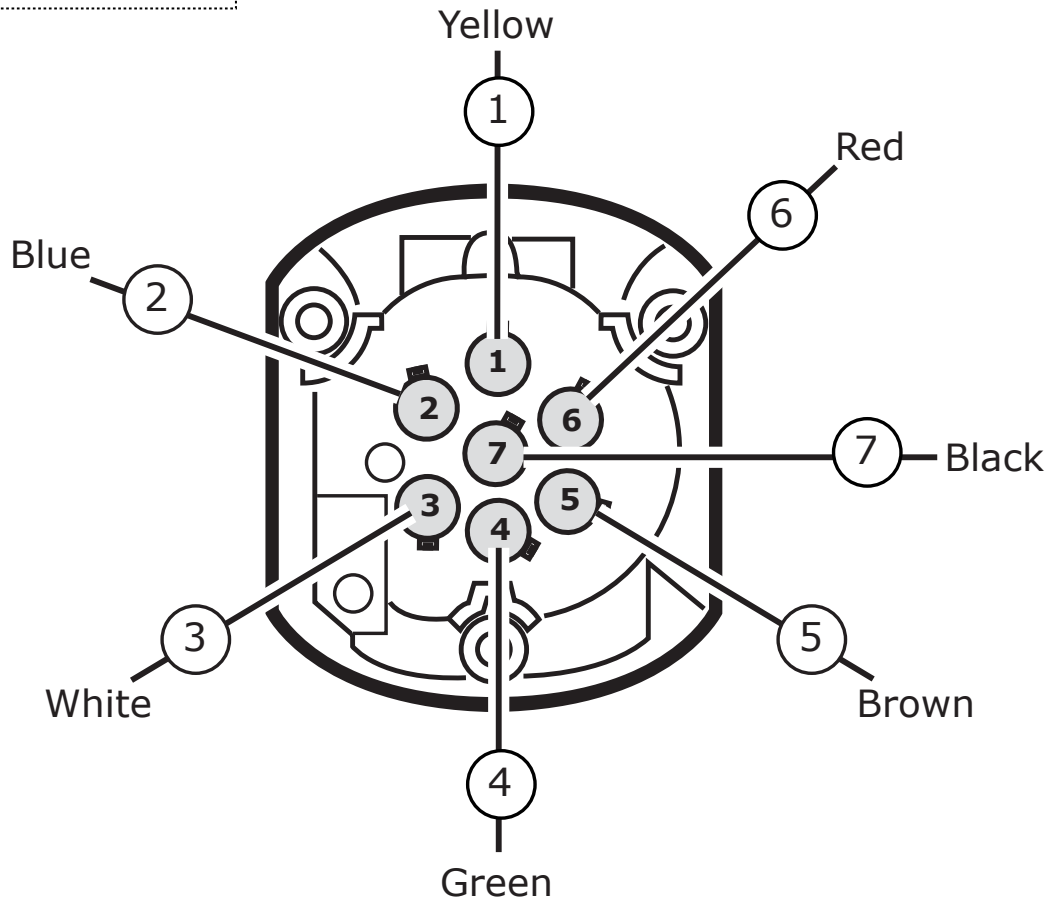
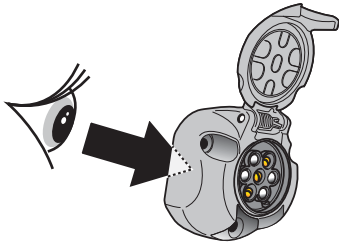
TECHNICAL SUPPORT

CALL 07440 202 052

ECS ELECTRONICS

MONDAY TO FRIDAY
08.00 - 11.00 am
12.00 - 05.00 pm
uks@ecs-electronics.com
www.ecs-electronicsuk.co.uk

SOCKET CONNECTION

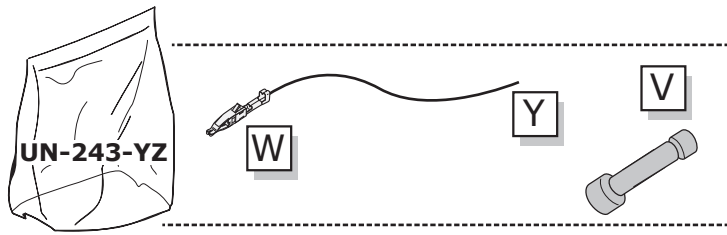


SOCKET CONNECTION

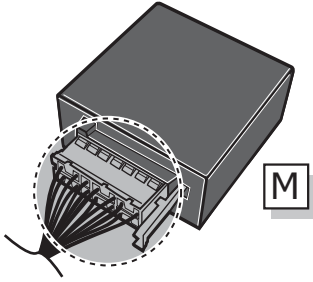
DIN/ISO 1724							
	1/L	2	3/31	4/R	5/58-R	6/54	7/58-L
Pmax	21W	2x21W		21W	52W	3x21W	52W
	Yellow	Blue	White	Green	Brown	Red	Black

UN-243-YZ Reverse lamp pre-wire extension

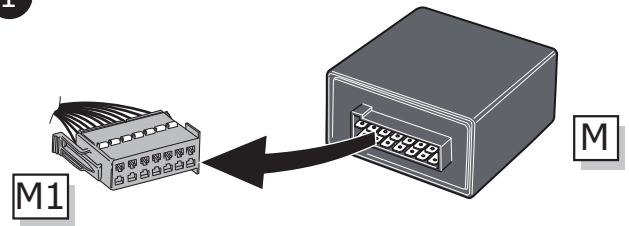
⚠ MAX = 21W



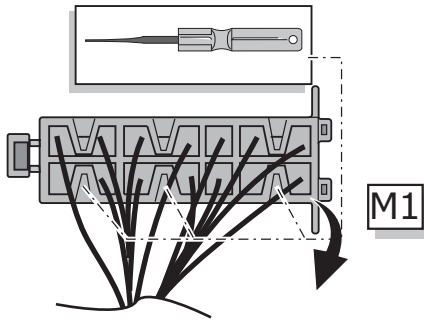
A



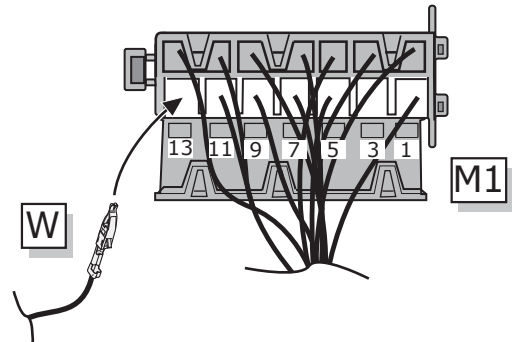
1



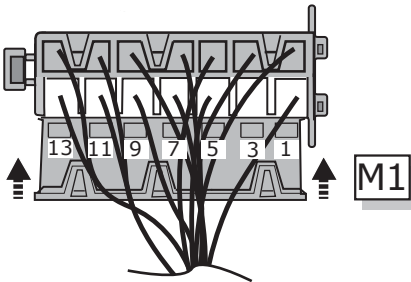
2



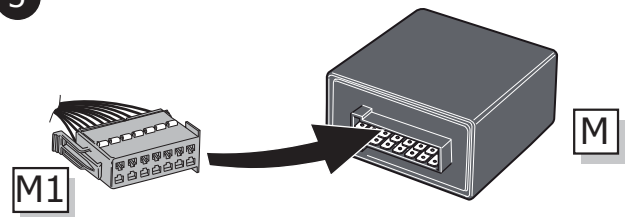
3



4



5



B

⚠ MAX = 21W

