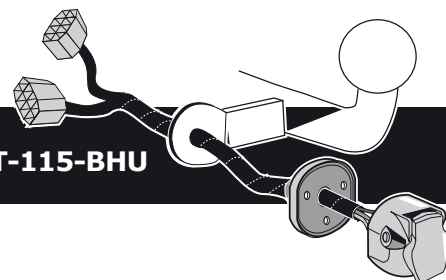


**Mitsubishi Outlander 2013-
Mitsubishi Outlander PHEV 09/2013-**

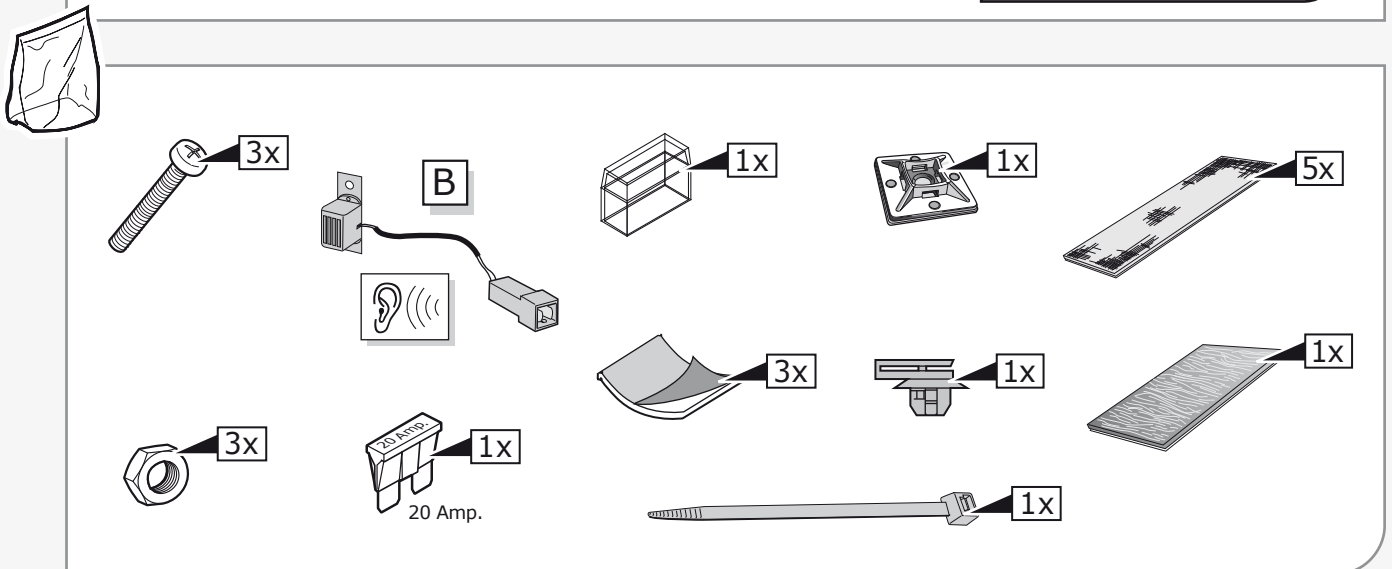
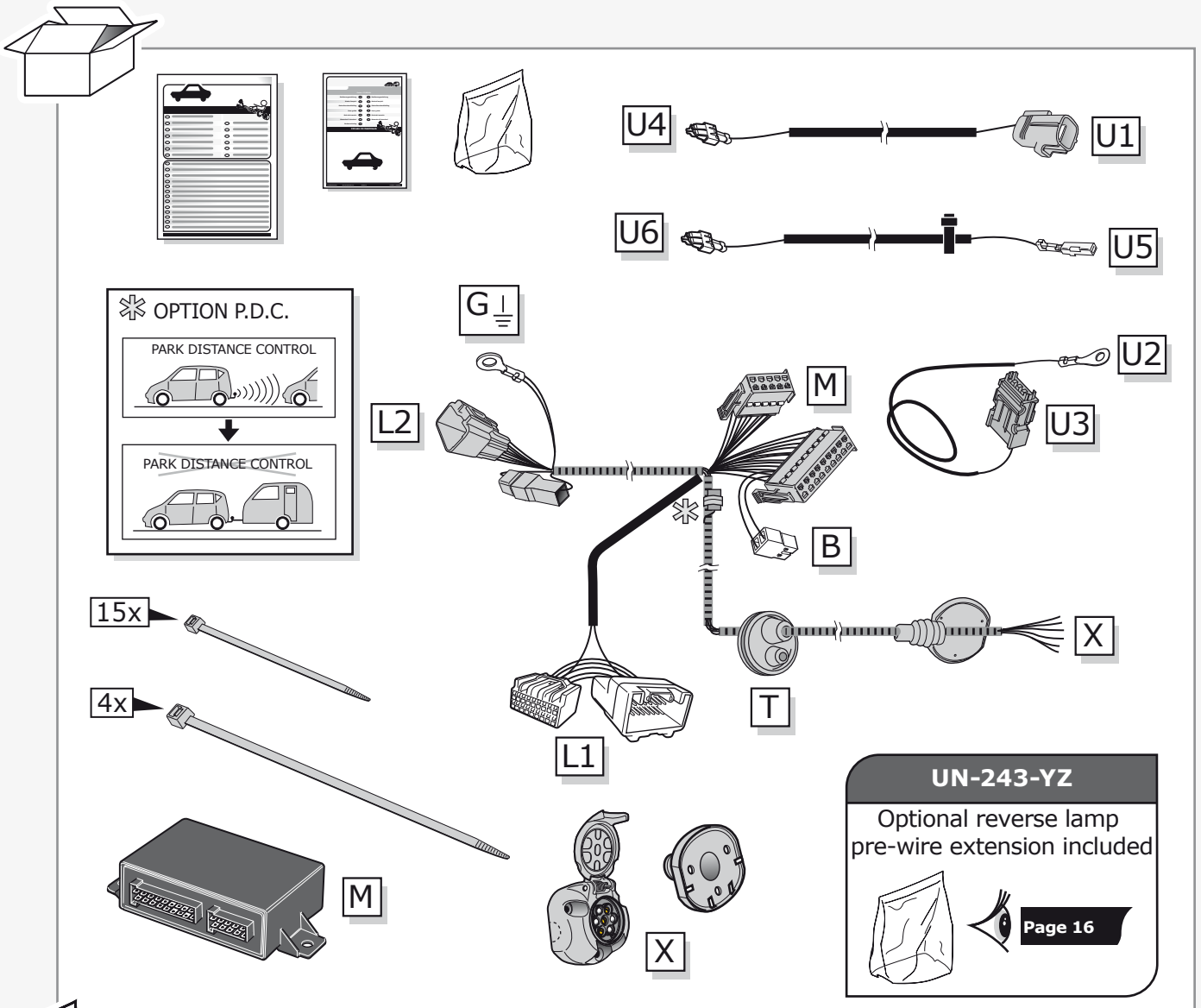
Partnr.: MT-115-BHU



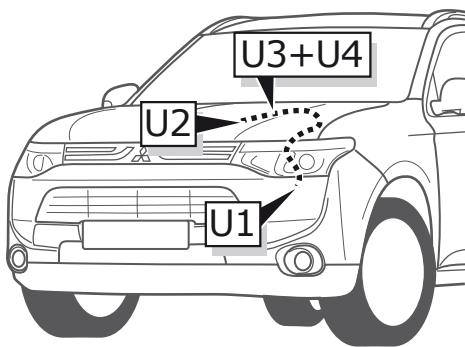
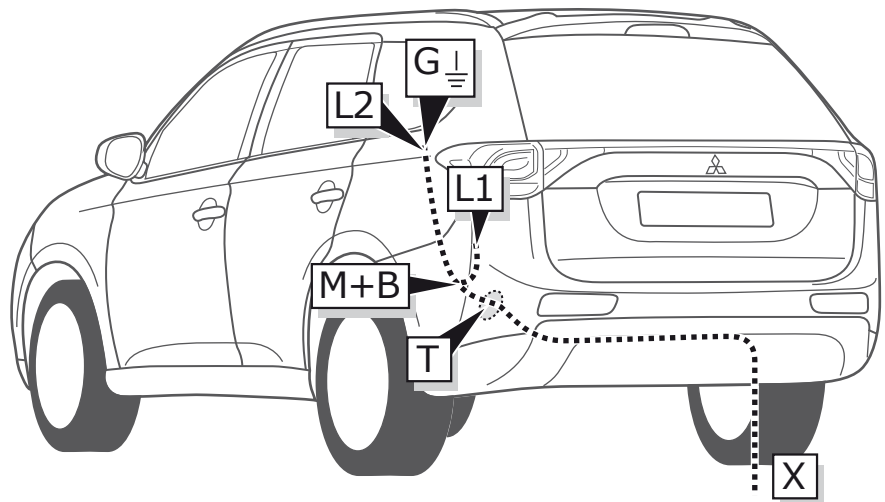
- Fitting instructions electric wiring kit tow bar with 12-N socket up to DIN/ISO Norm 1724.
- We would expressly point out that assembly not carried out properly by a competent installer will result in cancellation of any right to damage compensation, in particular those arising by virtue of the product liability act.
- Contents of these kits and their fitting manuals are subject to alteration without notice, please ensure that these instructions are read and fully understood before commencing installation.
- Do not overload circuits; the maximum loads per connection are detailed in this manual.
- Attention! Before Installation, please read this manual carefully and inform your customer to consult the vehicle owners manual to check for any vehicle modifications required before towing.
- In the event of functional problems, troubleshooting must be limited to about 0.5 hours, contact the technical support:
ukts@ecs-electronics.com / 07440 202 052.



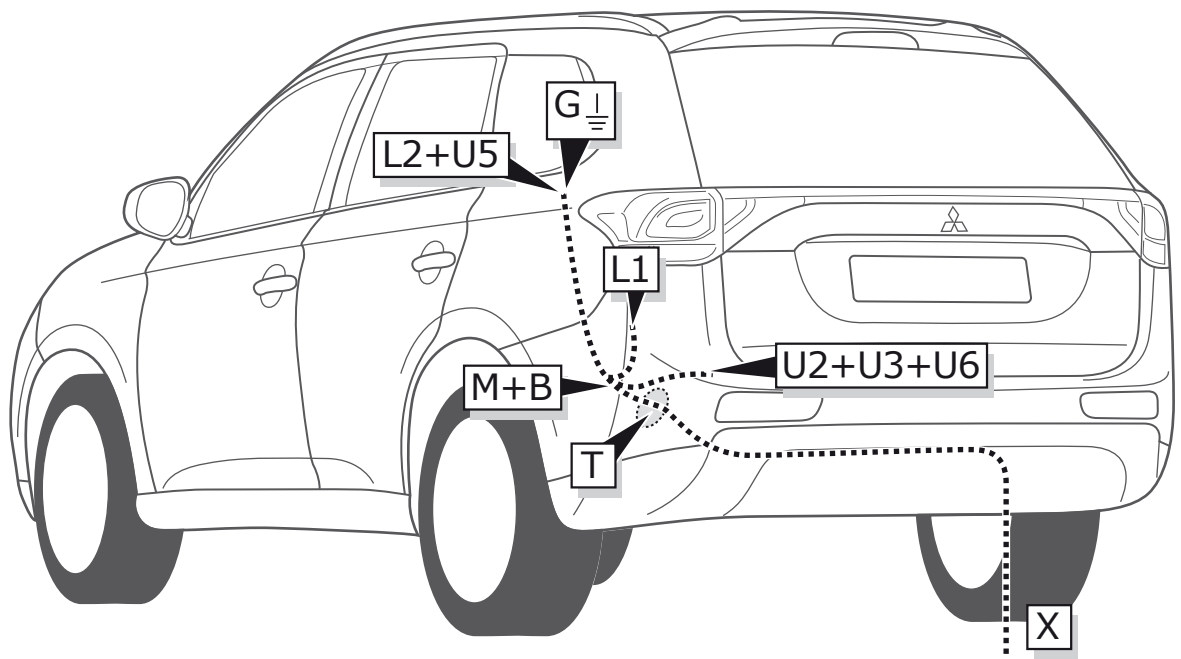
Part list



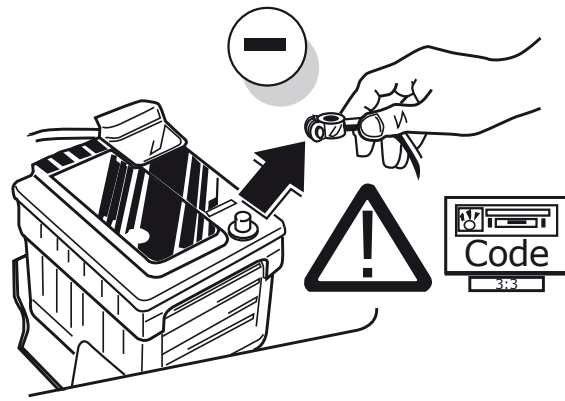
Mitsubishi Outlander
2013-



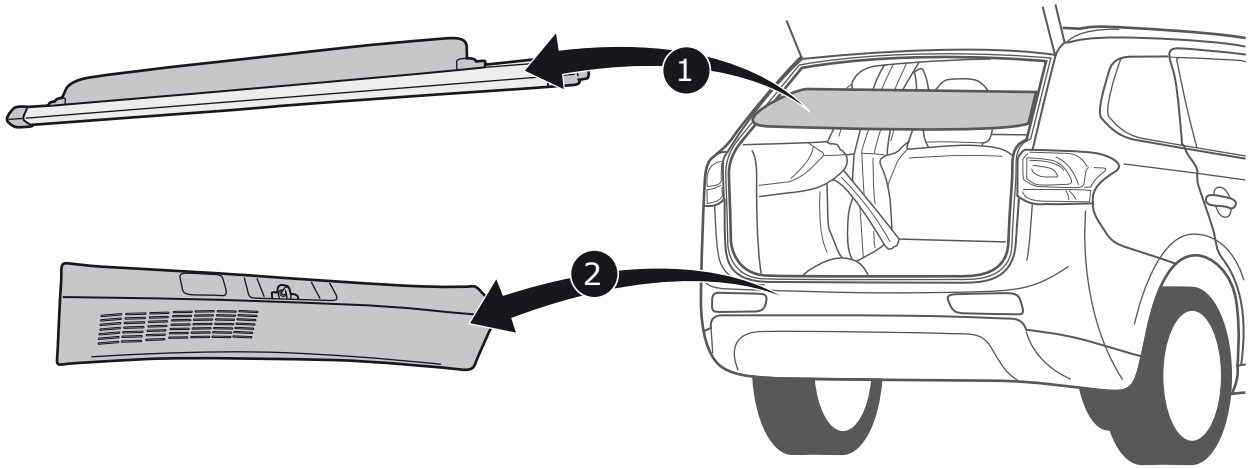
Mitsubishi Outlander
PHEV 09/2013-



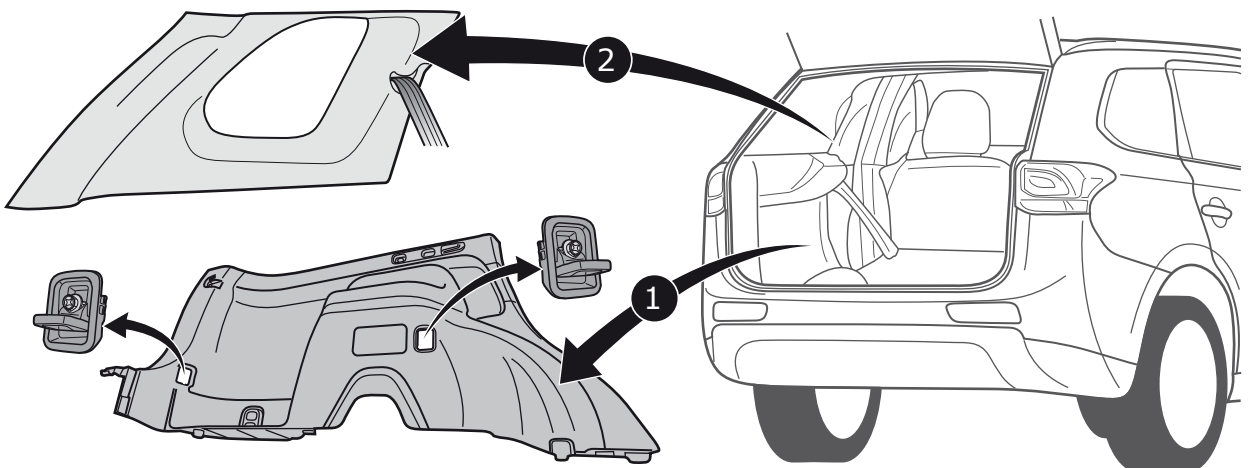
1



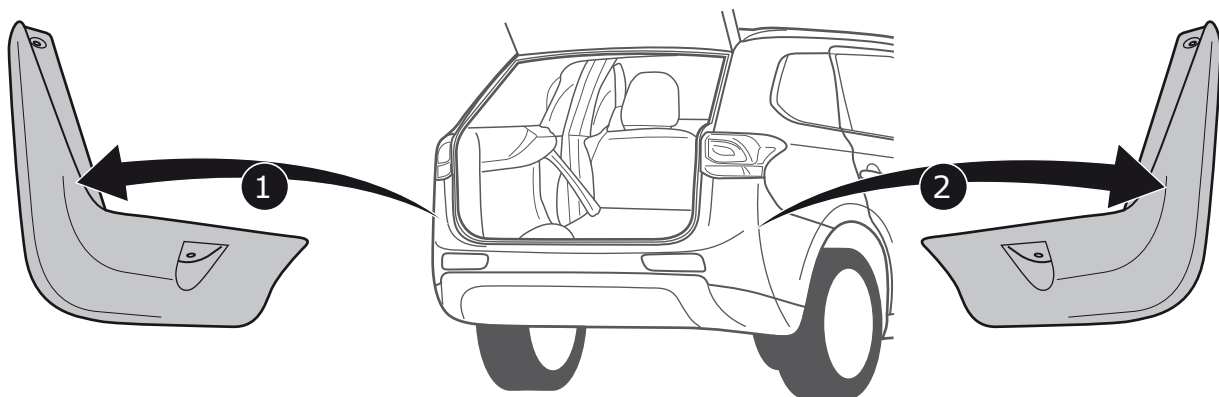
2



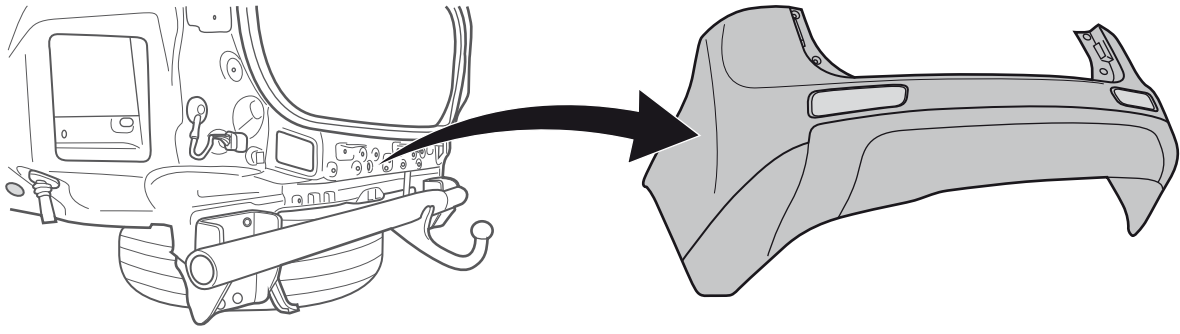
3



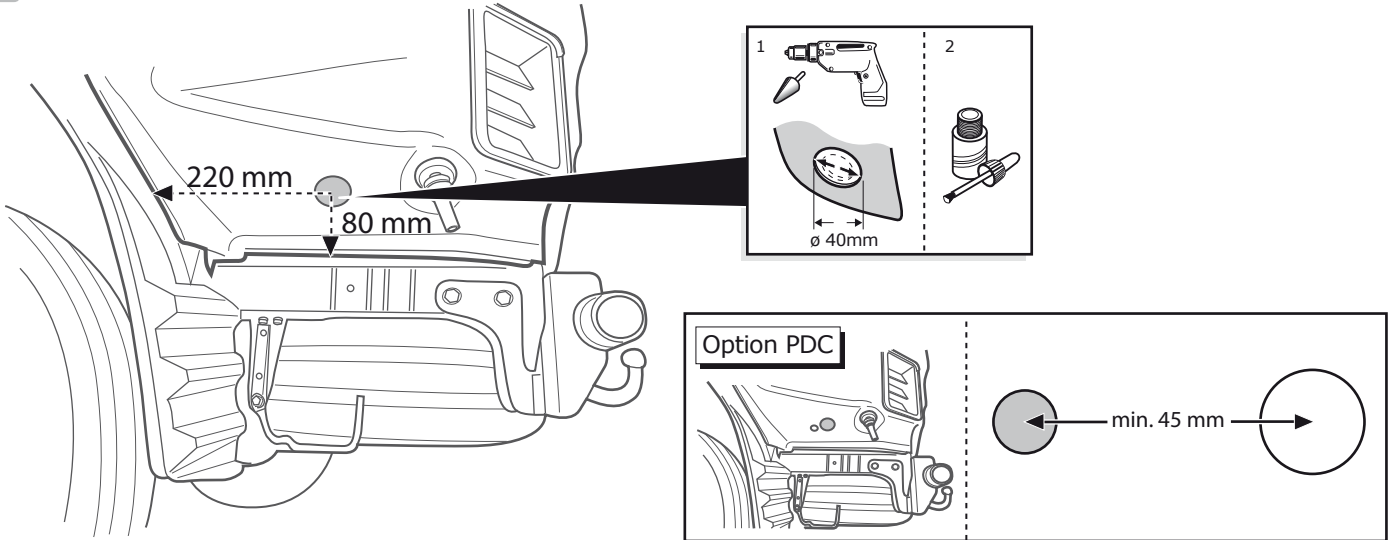
4



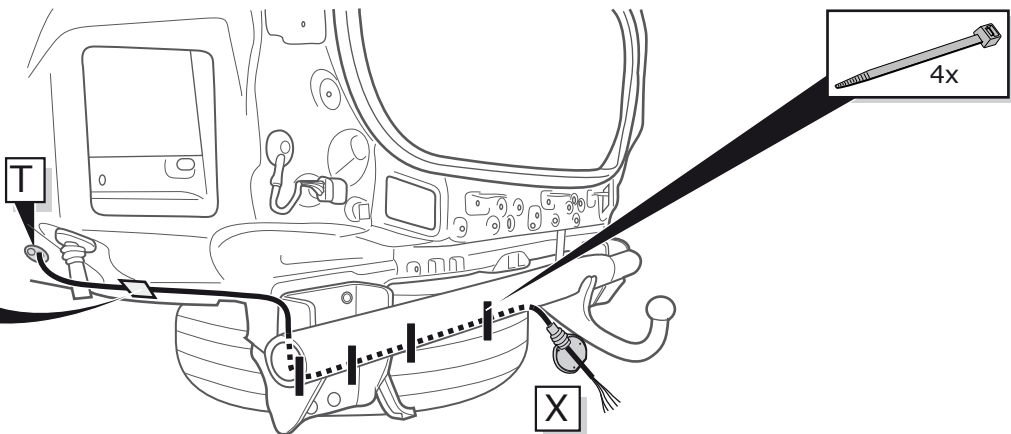
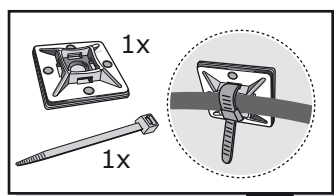
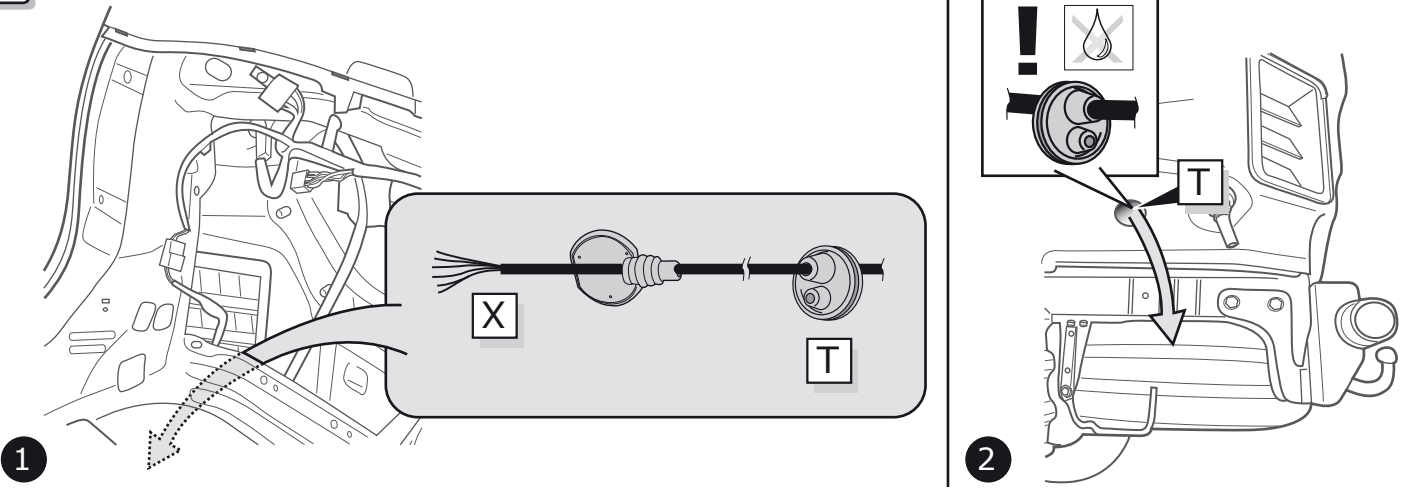
5



6



7



3

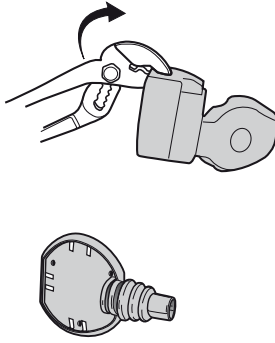
SOCKET CONNECTION



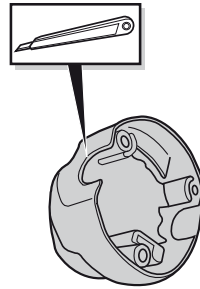
8

Option 1

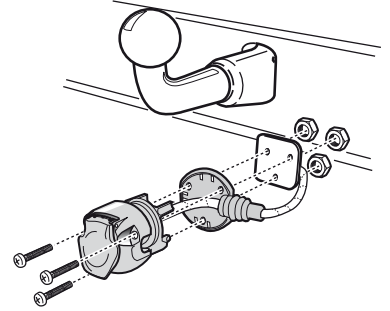
1



2



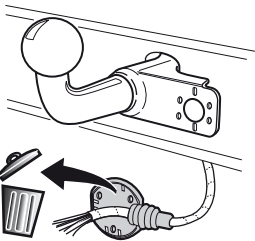
3



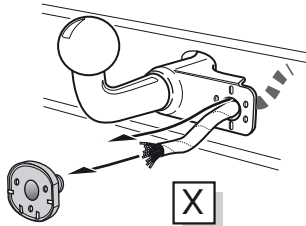
8A

Option 2

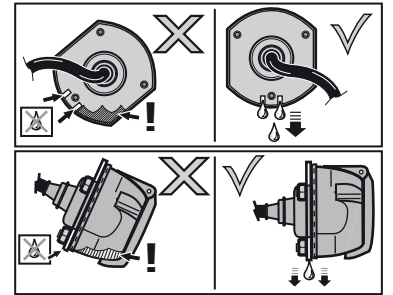
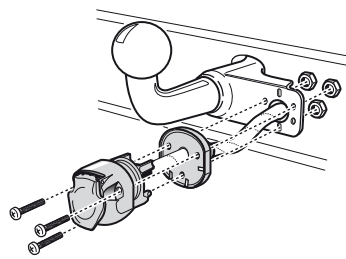
1



2

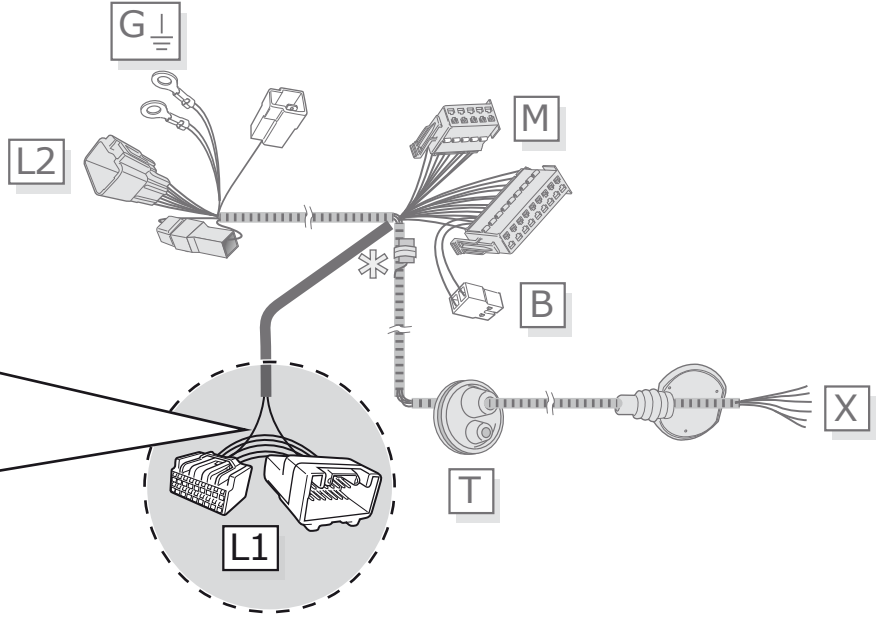
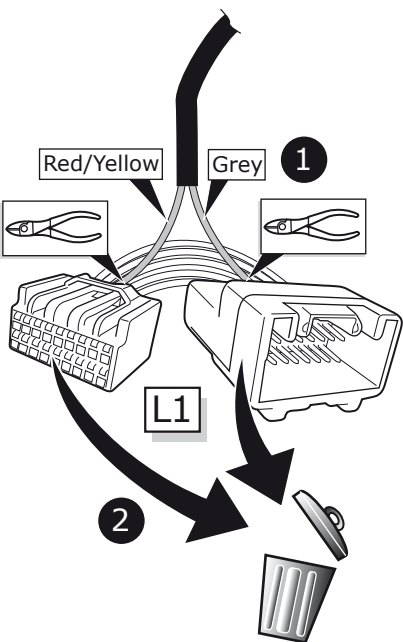


3



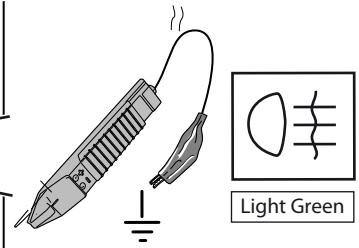
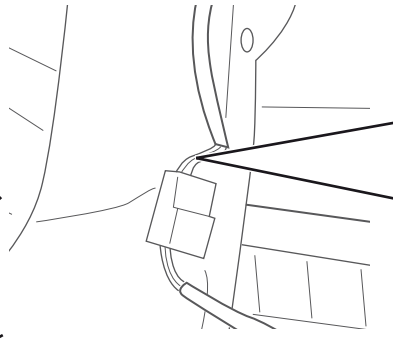
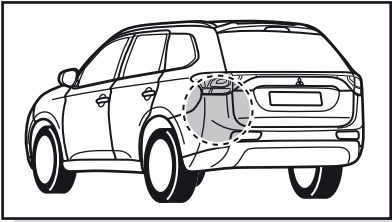
ONLY for PHEV models 2016-

9

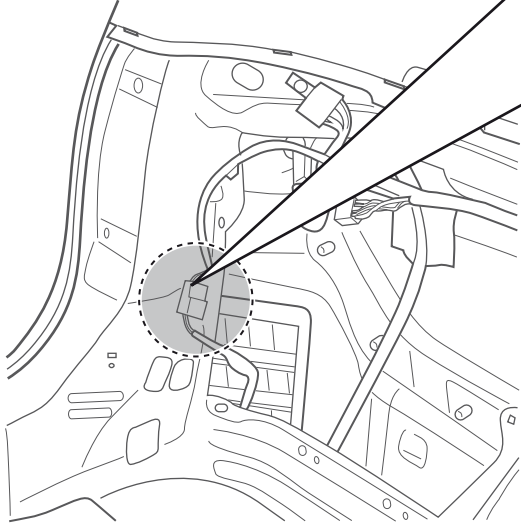


ONLY for PHEV models 2016-

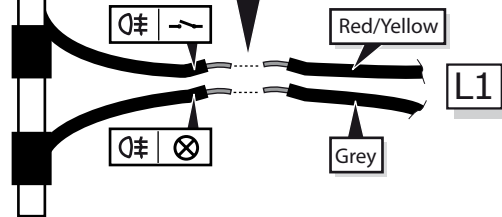
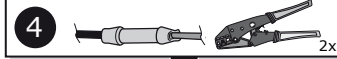
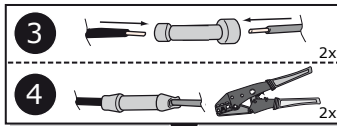
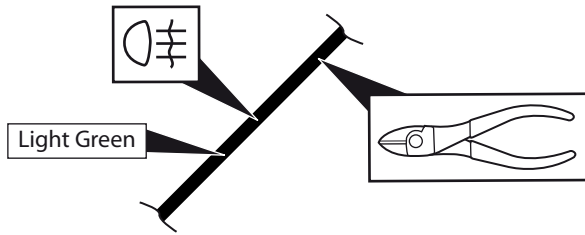
10



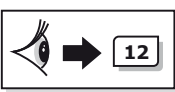
1



2

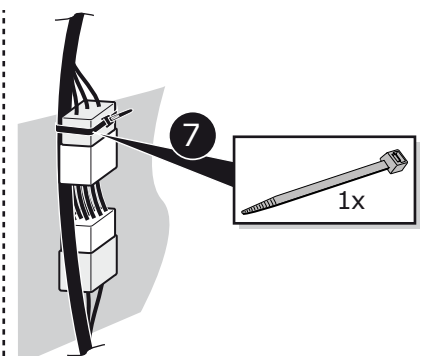
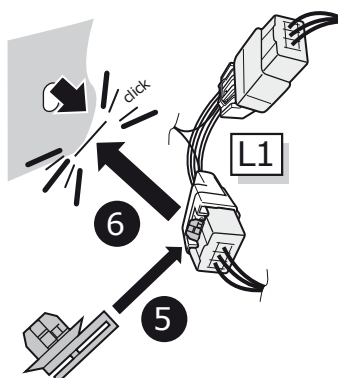
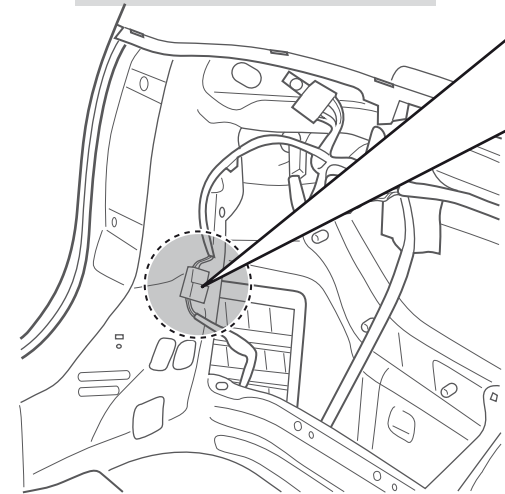
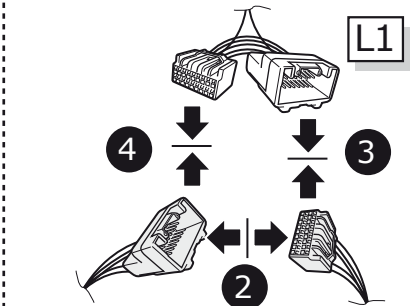
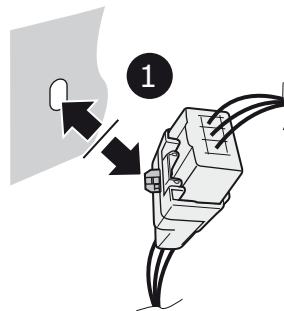
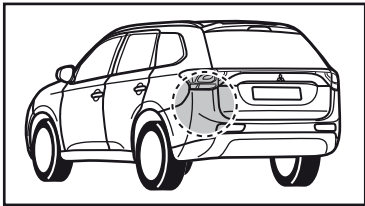


4

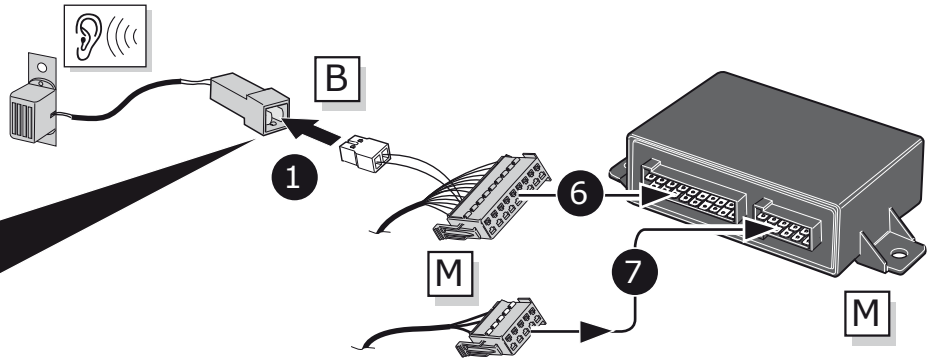
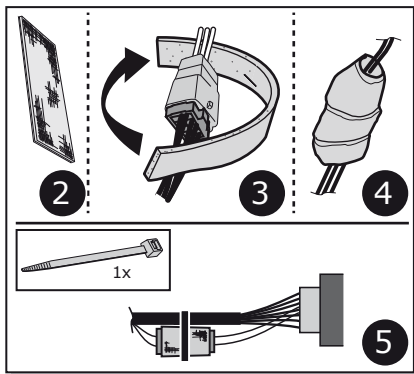


Other models

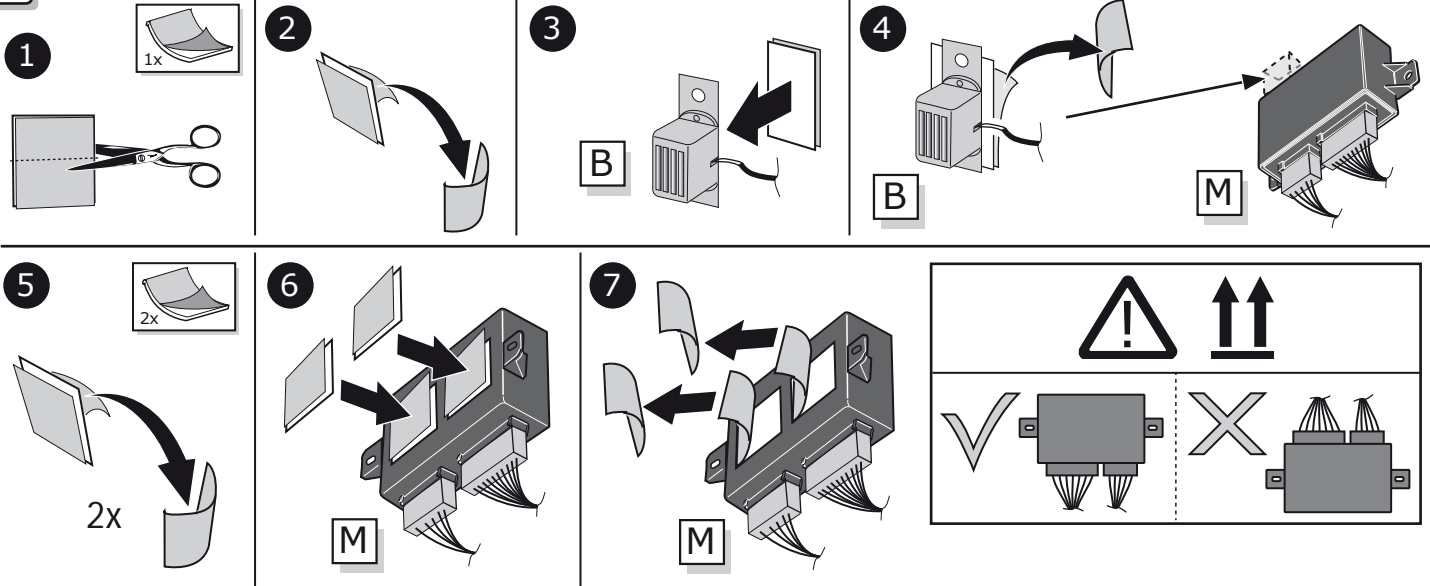
11



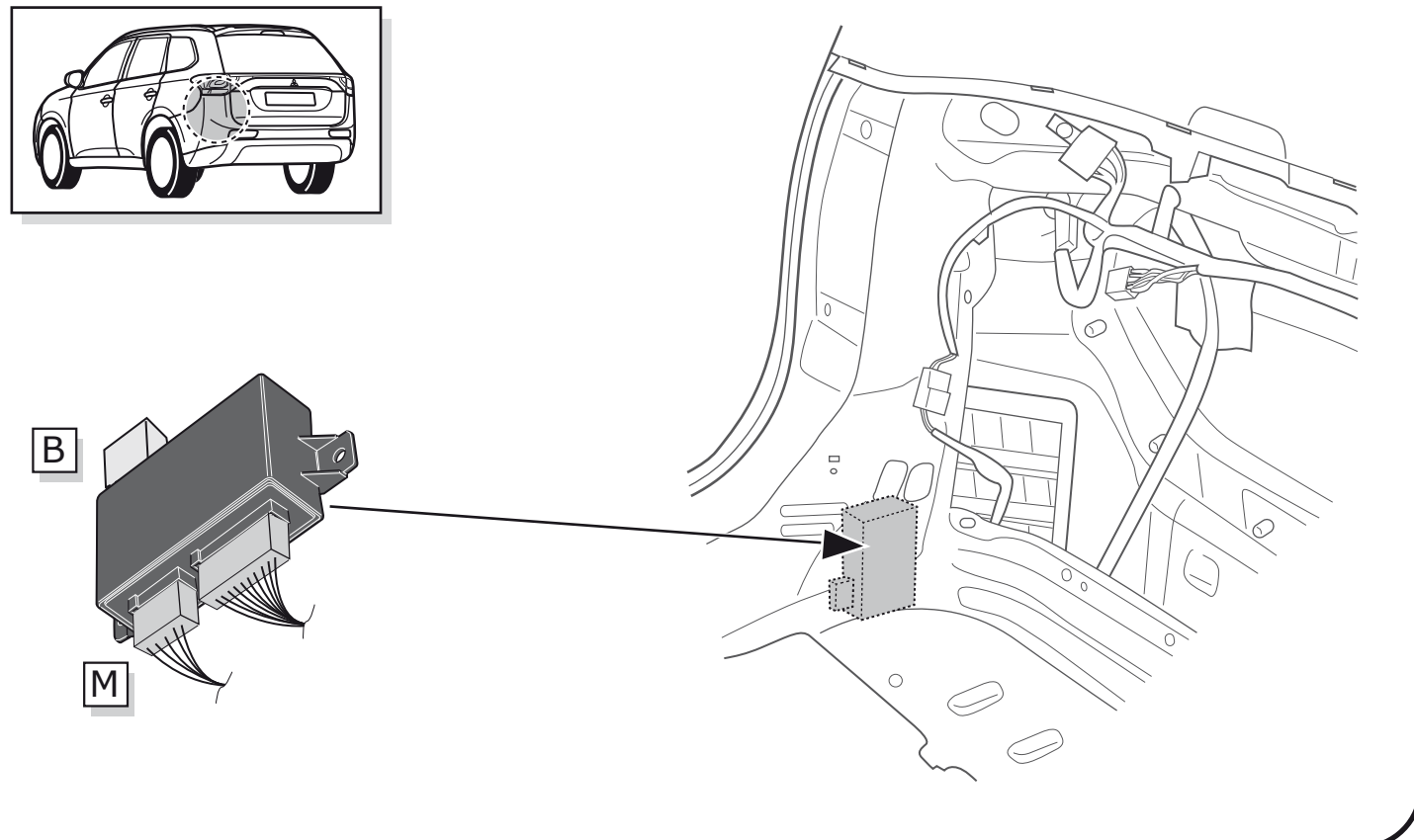
12



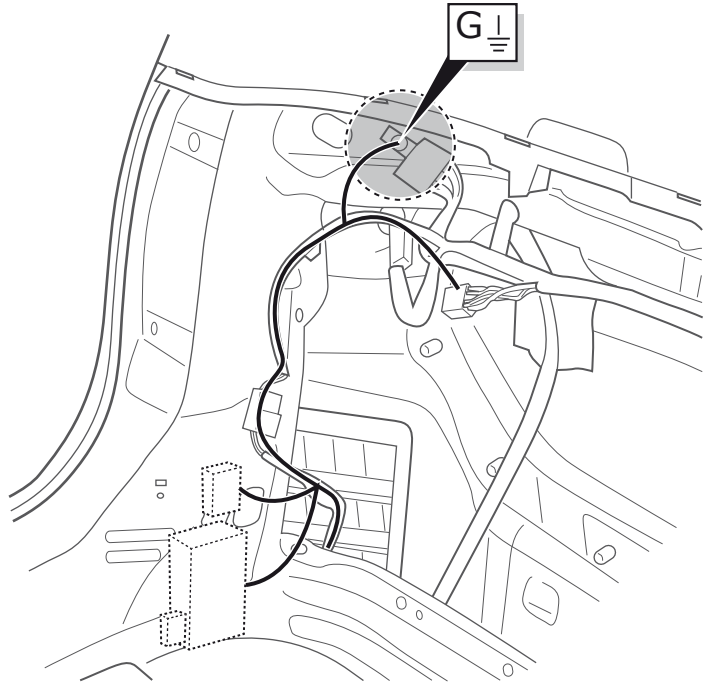
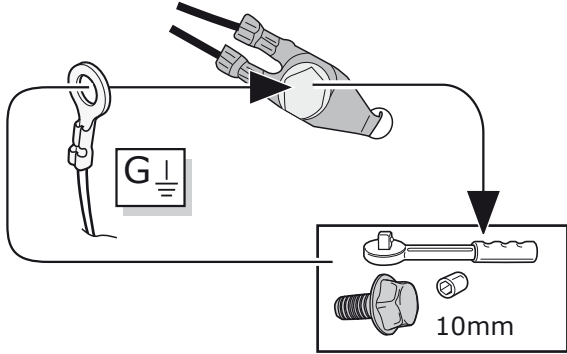
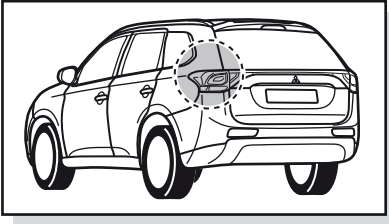
13



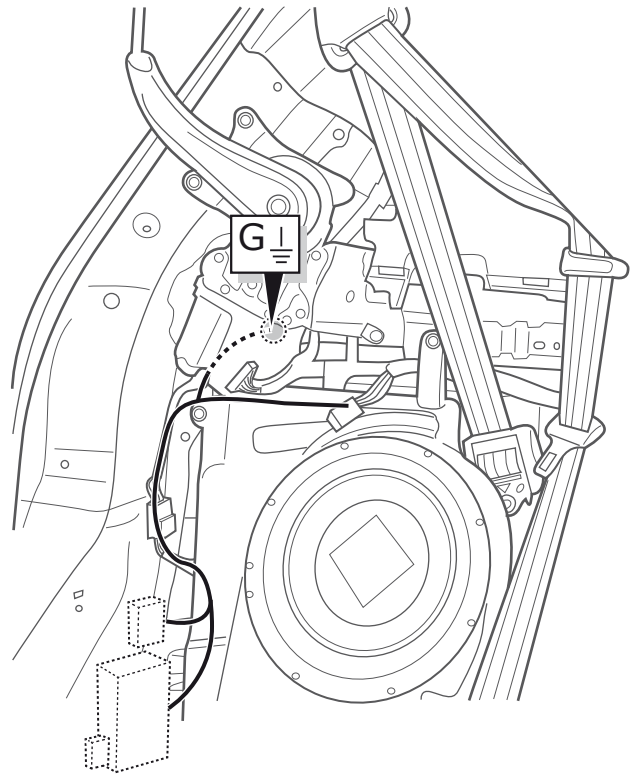
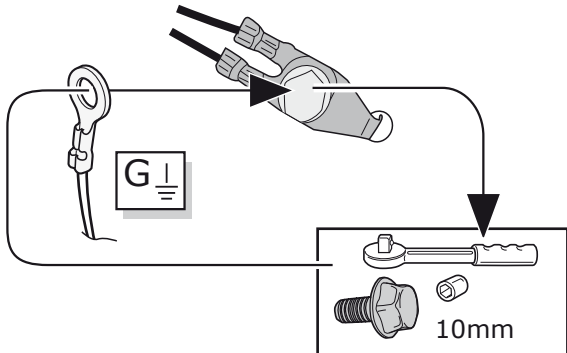
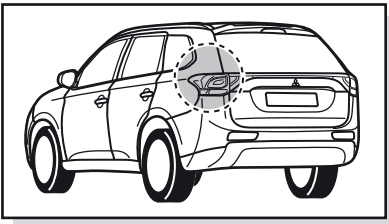
14



OPTION 1: without electrical tail gate opener



OPTION 2: with electrical tail gate opener



**Option 1:
Mitsubishi Outlander 2013-**

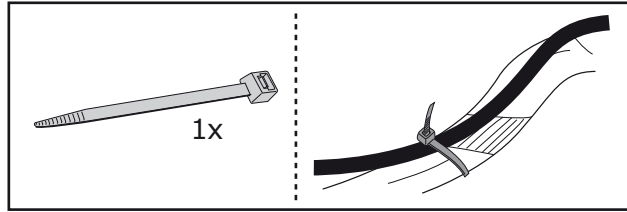
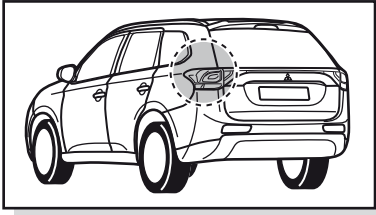


**Option 2:
Mitsubishi Outlander
PHEV 09/2013-**

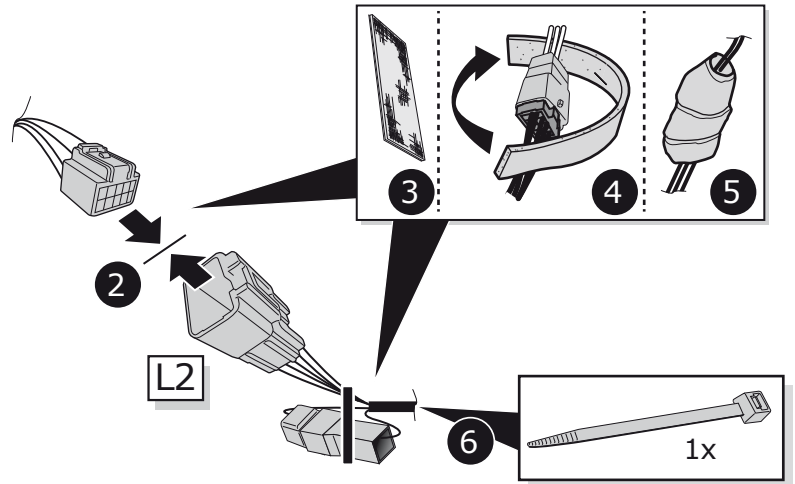
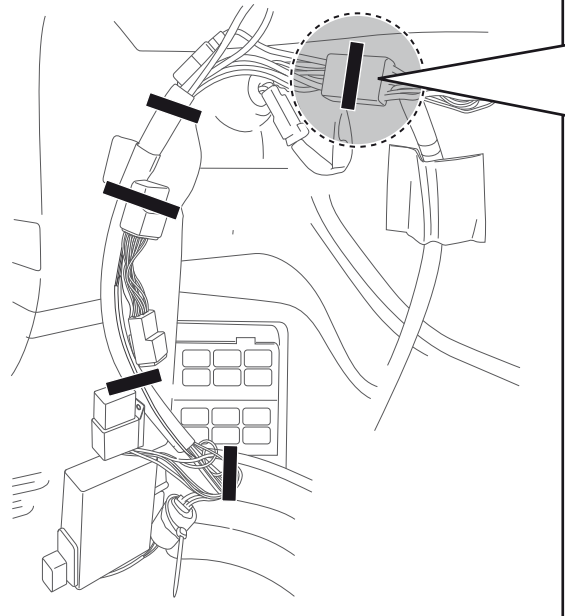


Option 1: Outlander 2013-

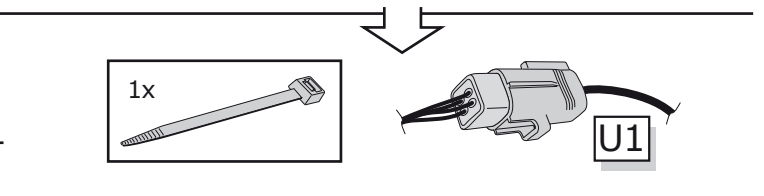
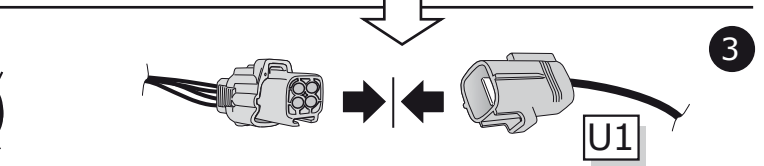
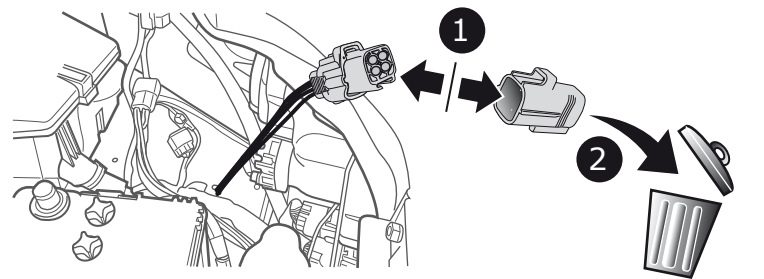
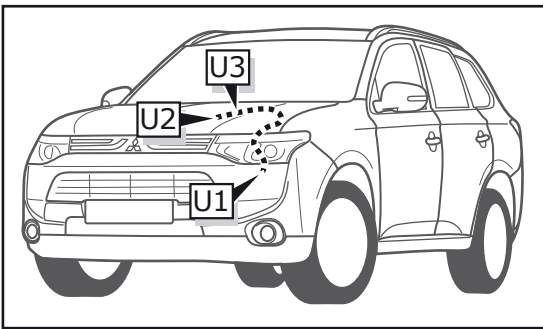
17



1

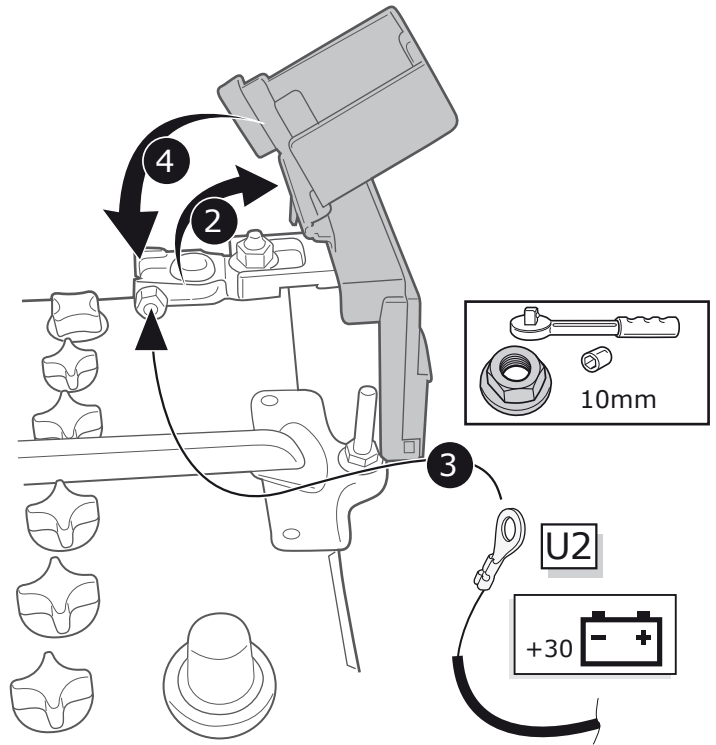
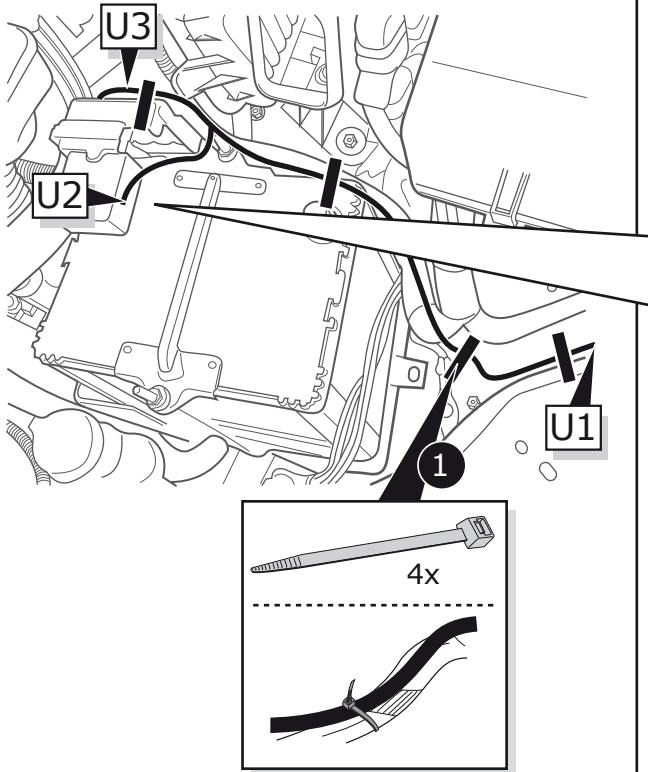


18

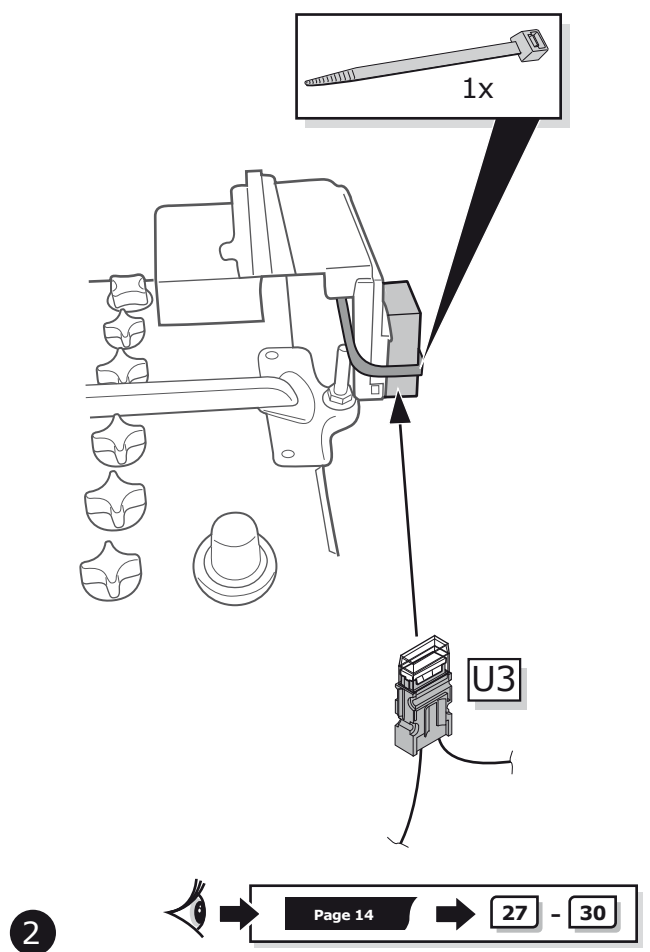
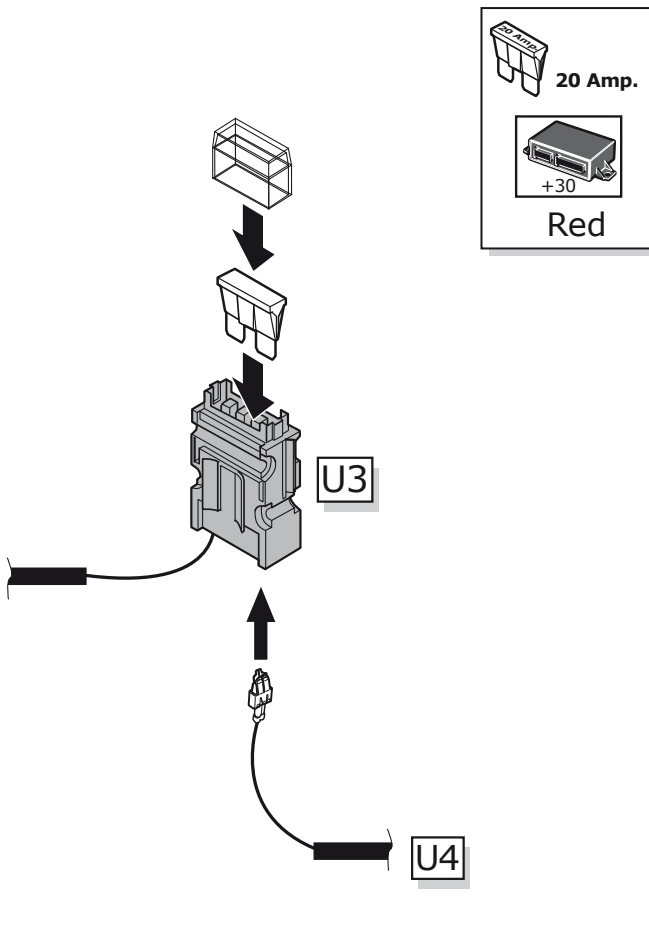


4

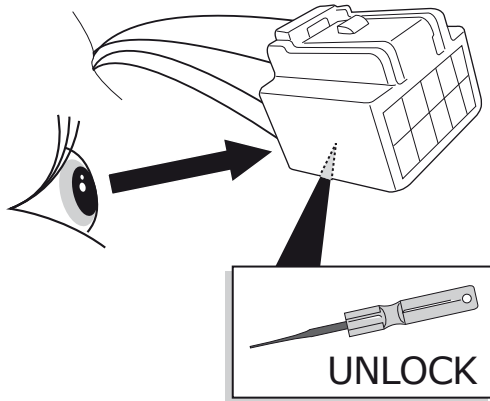
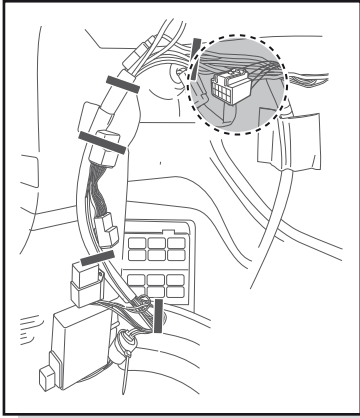
19



20

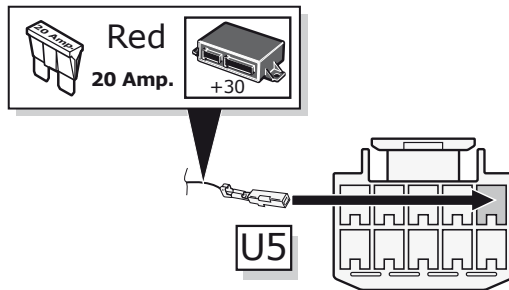
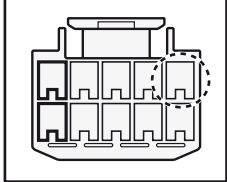


21

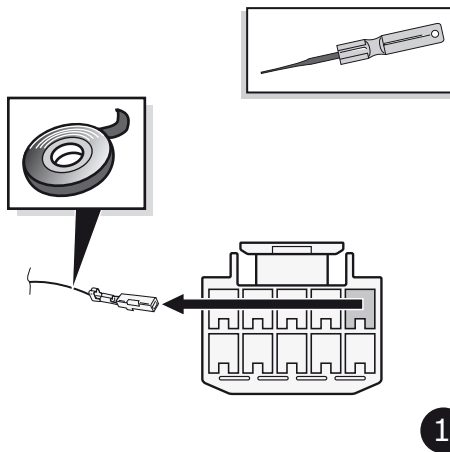
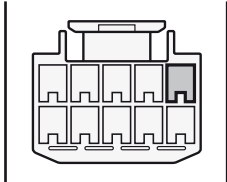


22

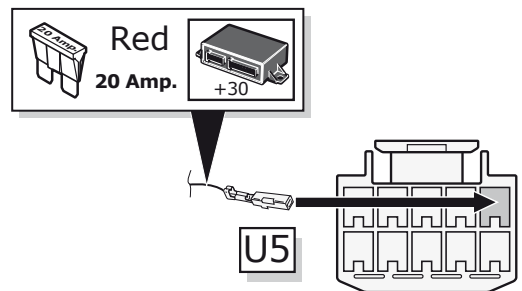
Option 1:
positions free



Option 2:
positions taken

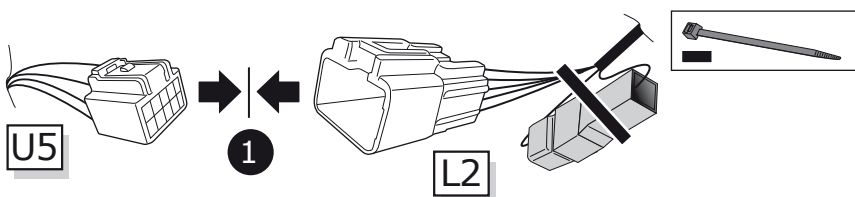


1

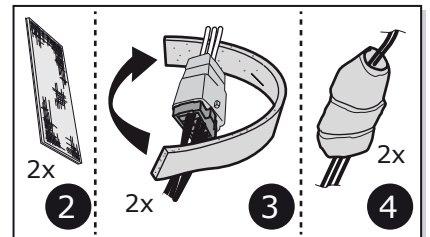


2

23



1



2

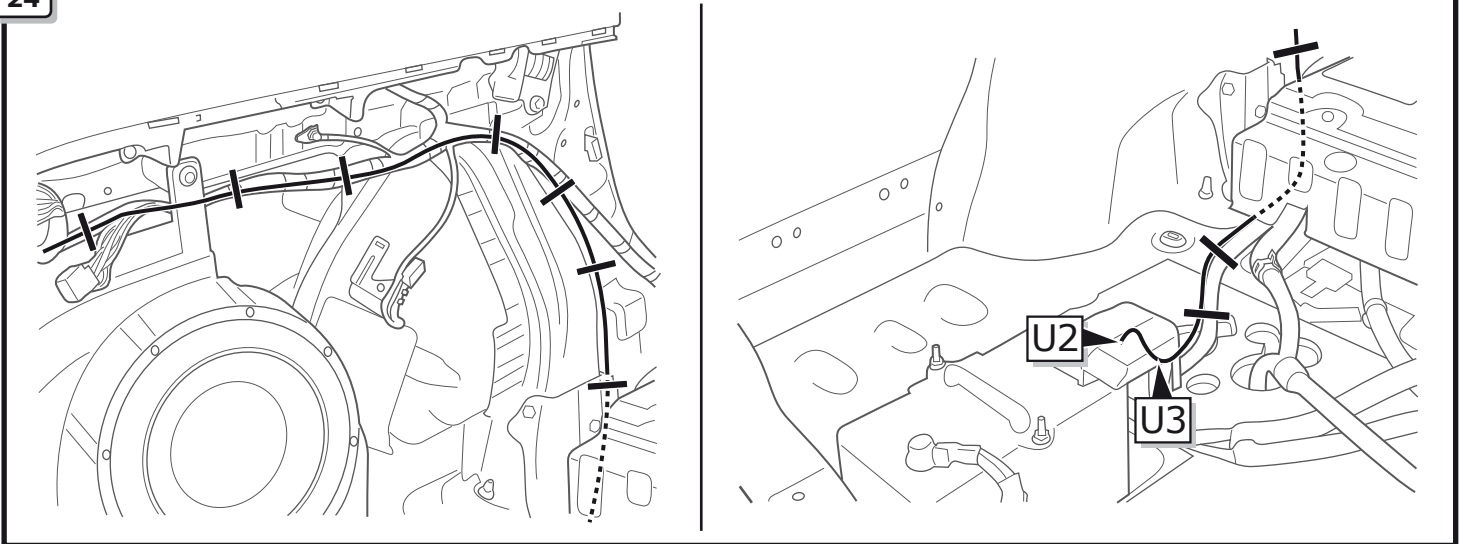
2x

3

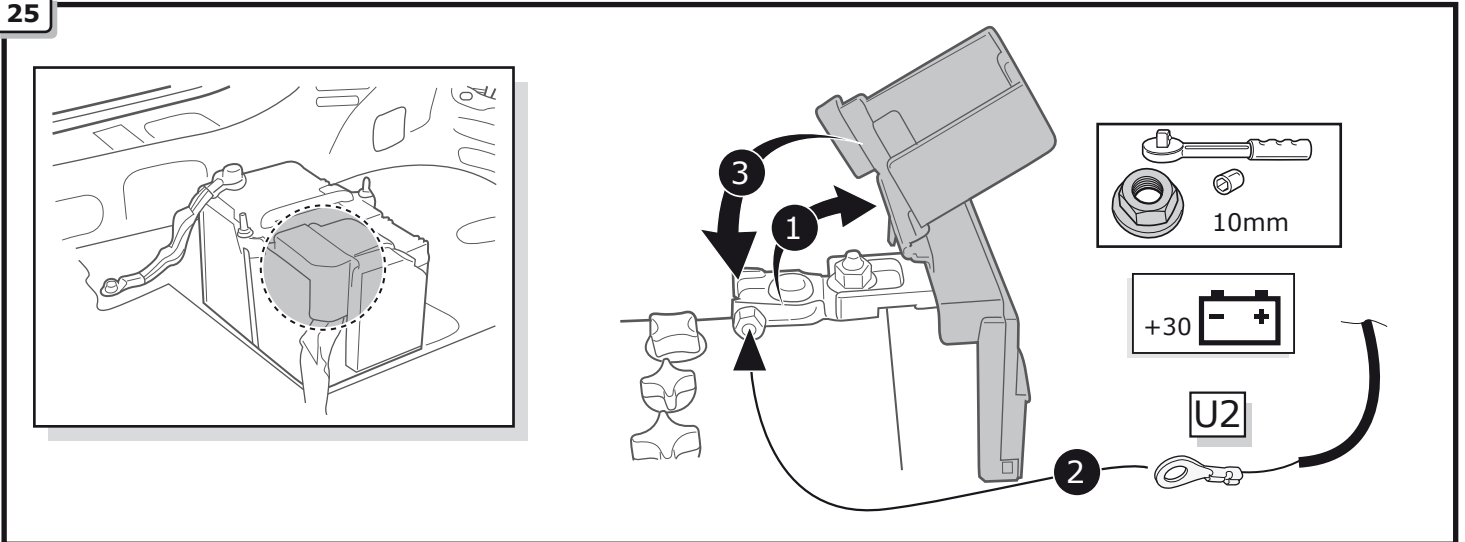
4

2x

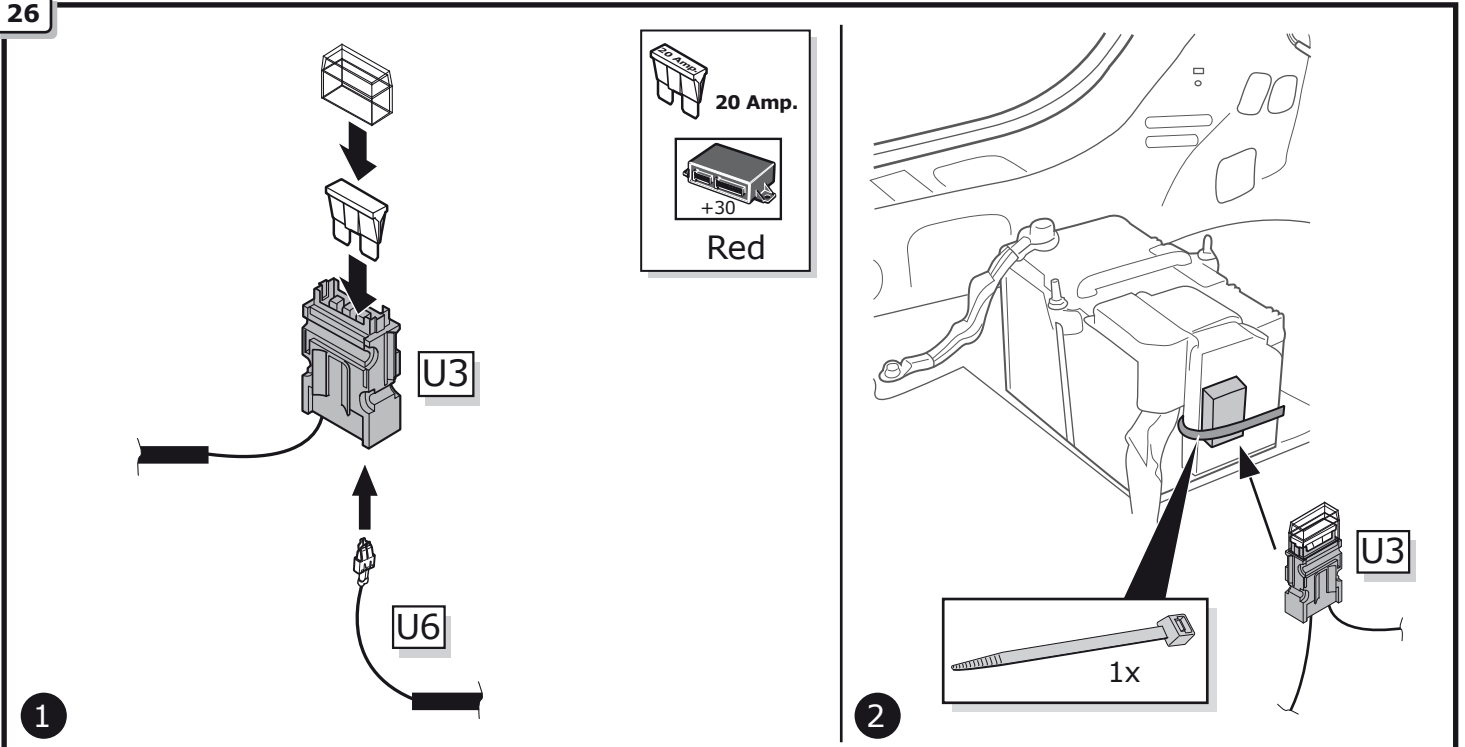
24



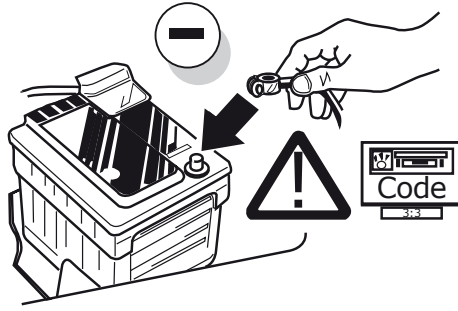
25



26



27



28

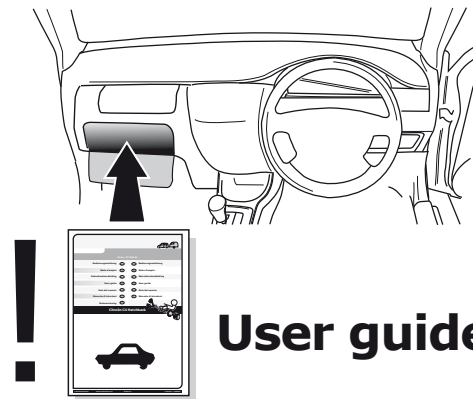


TEST ALL THE CIRCUITS WITH A TEST DEVICE WITH THE CORRECT POWER LOAD FOR EACH FUNCTION. A TEST DEVICE WITH LED'S CANNOT BE USED FOR THIS PURPOSE.

29

REINSTALL TRIM.

30



User guide

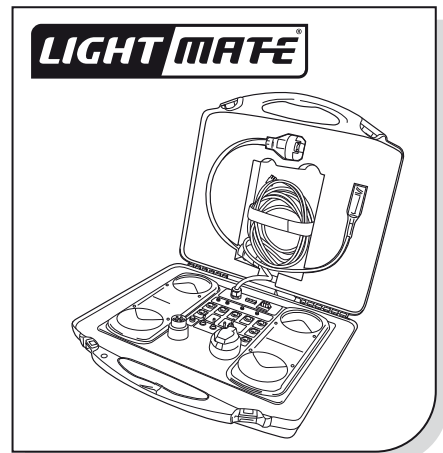
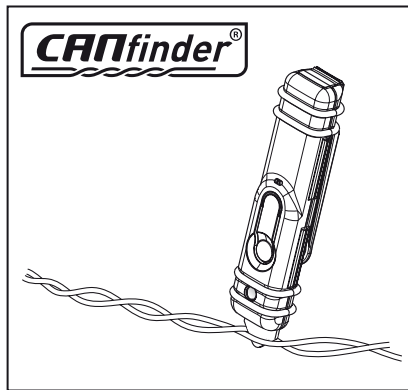
INFO

TECHNICAL SUPPORT

CALL 07440 202 052

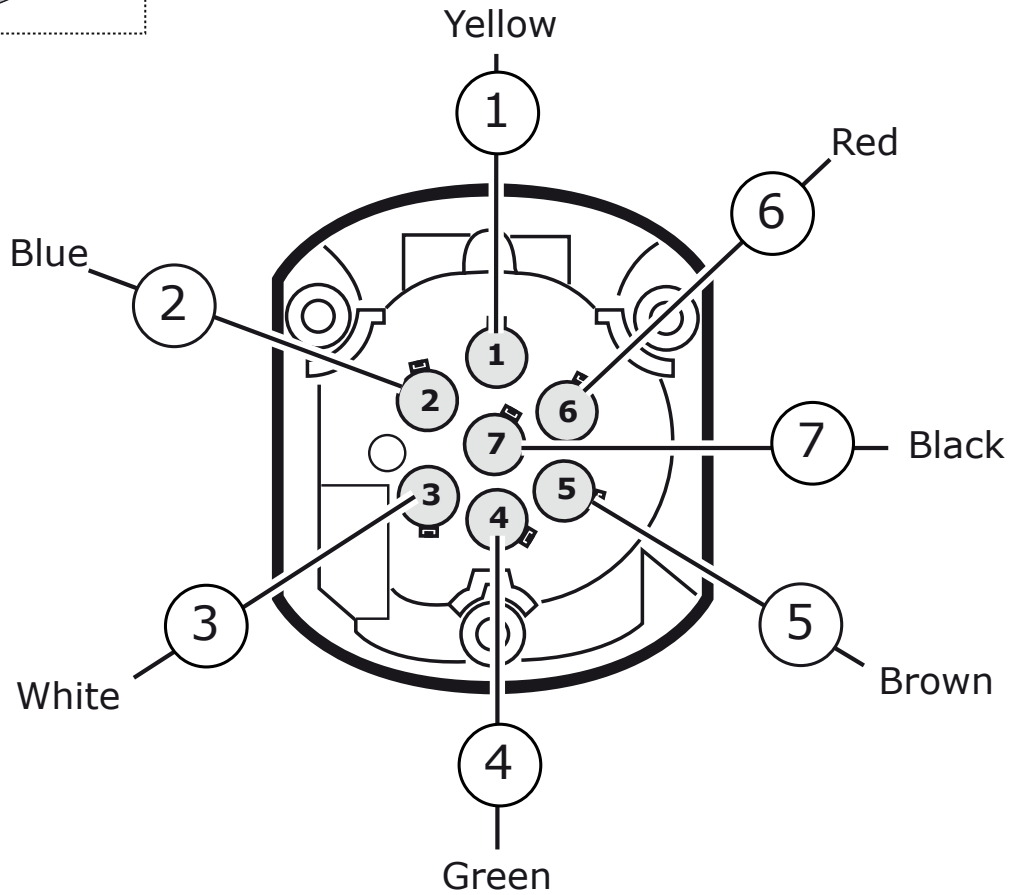
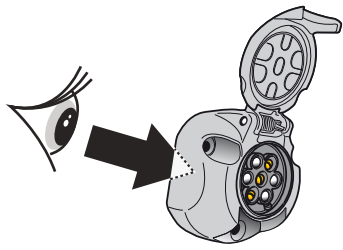
ECS ELECTRONICS MONDAY TO FRIDAY
08.00 - 11.00 am
12.00 - 05.00 pm
uks@ecs-electronics.com
www.ecs-electronicsuk.co.uk

Products & Service



http://www.ecs-electronics.nl/NL/catalogus/test_gereedschap

SOCKET CONNECTION

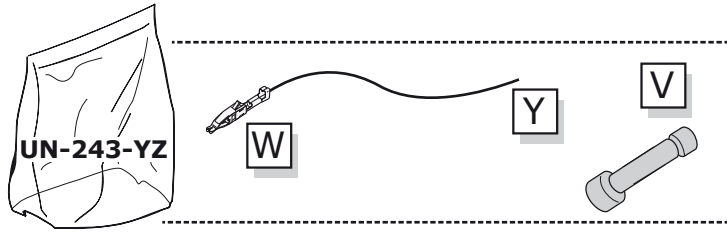


Socket connection

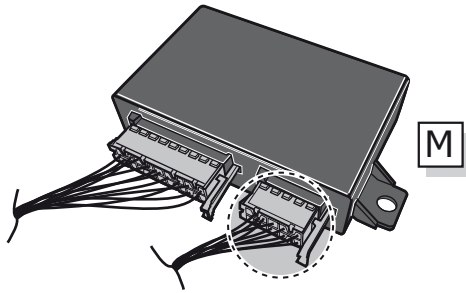
DIN/ISO 1724							
	1/L	2	3/31	4/R	5/58-R	6/54	7/58-L
P _{max}	21W	2x21W		21W	52W	3x21W	52W
Colour	Yellow	Blue	White	Green	Brown	Red	Black

UN-243-YZ Reverse lamp pre-wire extension

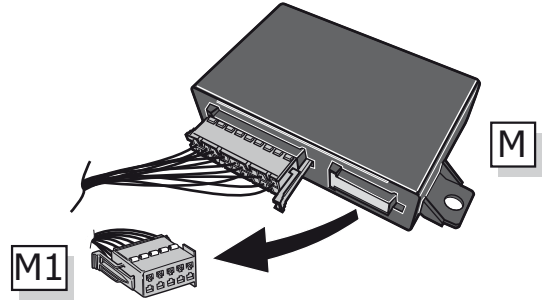
⚠ MAX = 21W



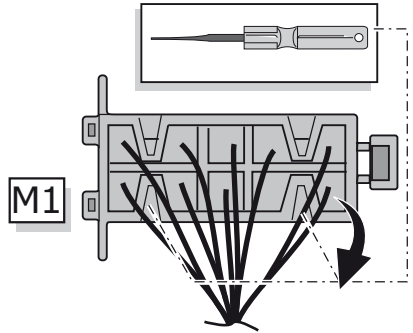
A



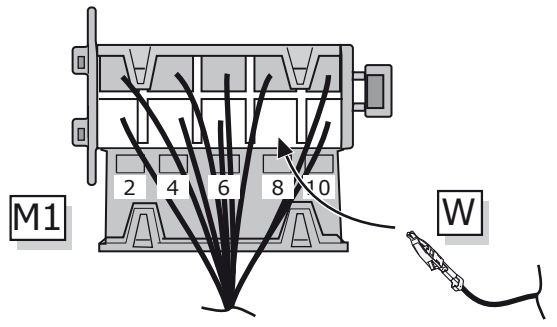
1



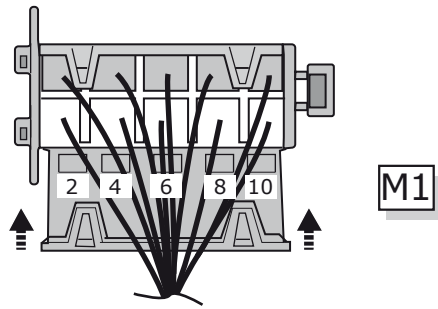
2



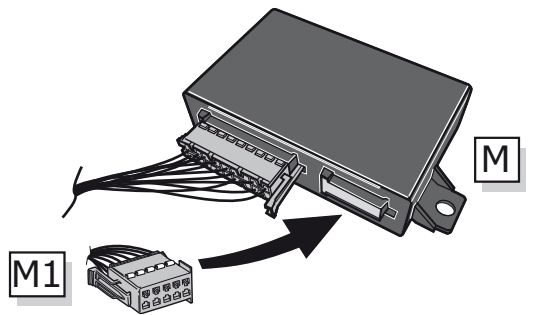
3



4



5



B

⚠ MAX = 21W

