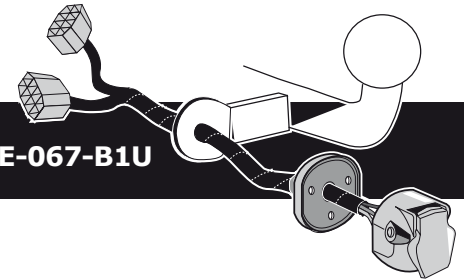


**Peugeot Expert 07/2016-
Peugeot Traveller 07/2016-
Toyota Pro Ace 02/2016-
Toyota Proace Verso 02/2016-
Citroën Dispatch 07/2016-
Citroën Space Tourer 07/2016-
Vauxhall Vivaro C 07/2019-
Vauxhall Vivaro Life 07/2019-**

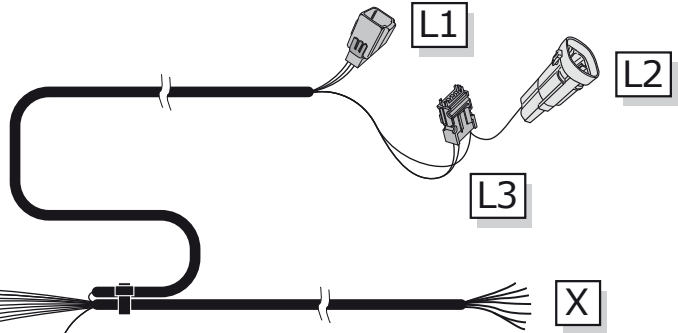
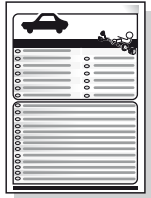
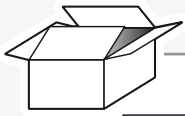
Partnr.: PE-067-B1U



- Fitting instructions electric wiring kit tow bar with 12-N socket up to DIN/ISO Norm 1724.
- We would expressly point out that assembly not carried out properly by a competent installer will result in cancellation of any right to damage compensation, in particular those arising by virtue of the product liability act.
- Contents of these kits and their fitting manuals are subject to alteration without notice, please ensure that these instructions are read and fully understood before commencing installation.
- Do not overload circuits; the maximum loads per connection are detailed in this manual.
- Attention! Before Installation, please read this manual carefully and inform your customer to consult the vehicle owners manual to check for any vehicle modifications required before towing.
- In the event of functional problems, troubleshooting must be limited to about 0.5 hours, contact the technical support:
t.skinner@ecs-electronics.com / 07440 202 052.



Part list



M

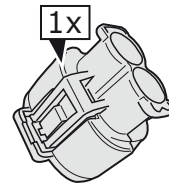
G I

Optional UN-243-YZ

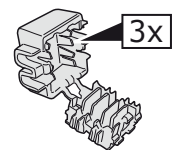
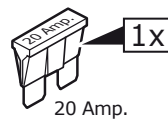
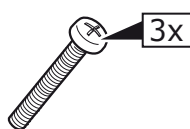
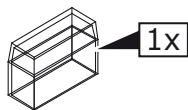
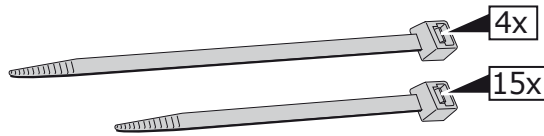
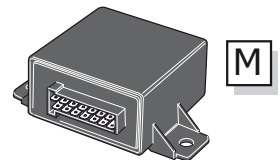
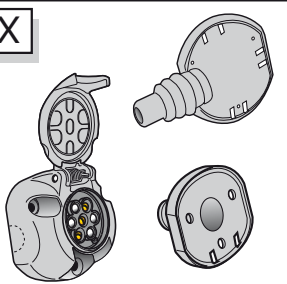
Reverse lamp pre-wire extension



Pag. 14



X



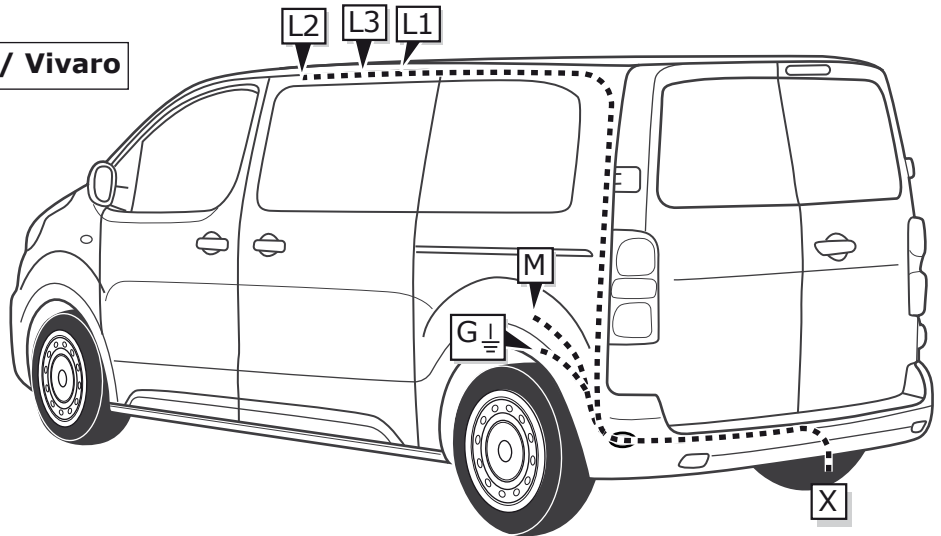
INFO



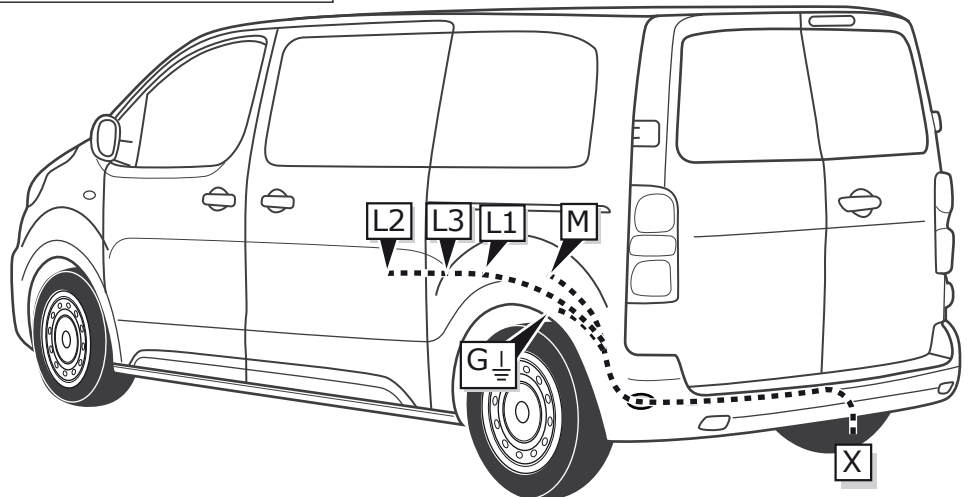
Vehicle MUST be coded for Trailer lights to function

ROUTING

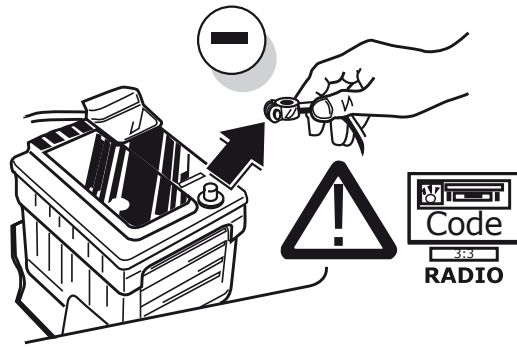
Dispatch / Expert / Pro Ace / Vivaro



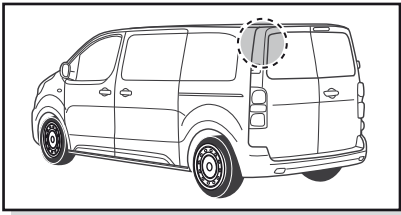
Traveller / Proace Verso/ Space Tourer / Vivaro



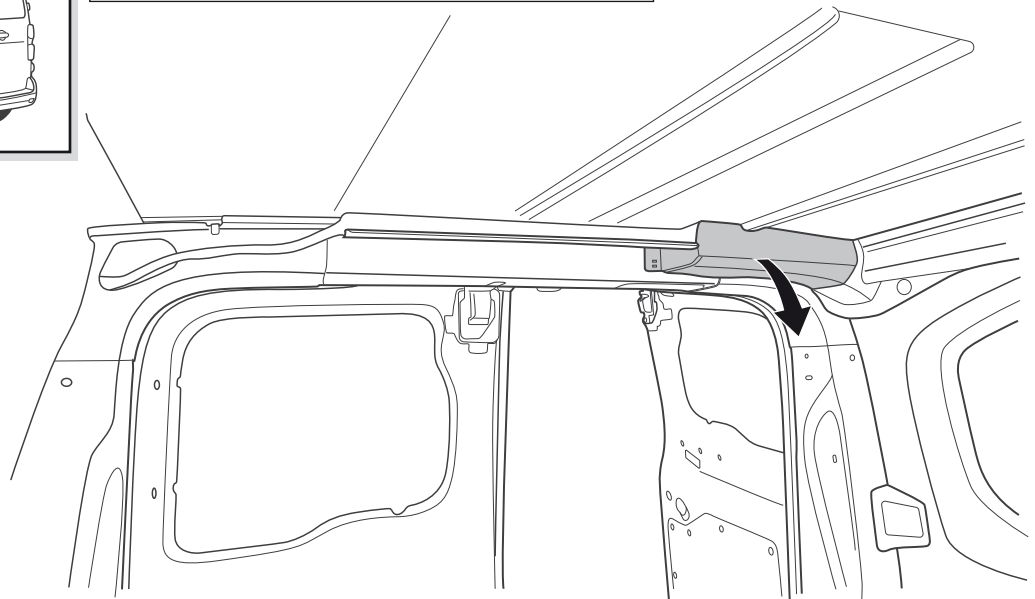
1



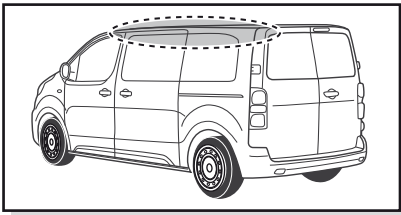
2



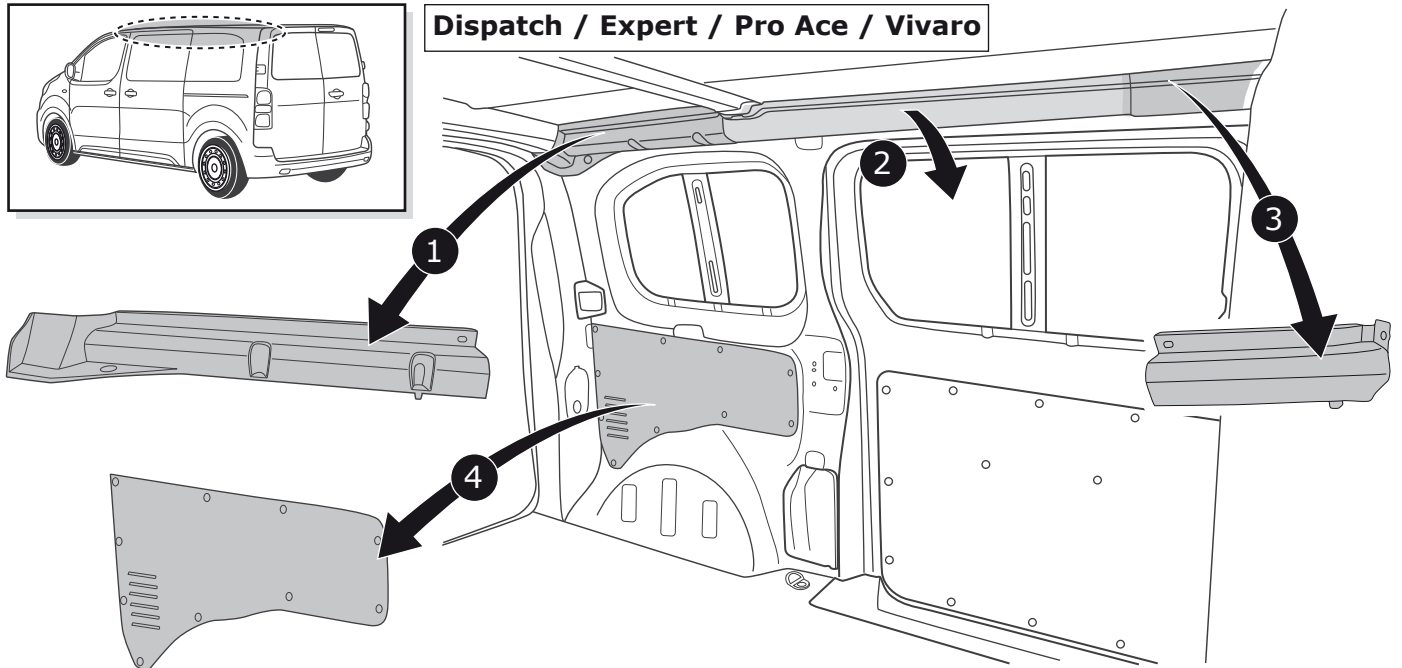
Dispatch / Expert / Pro Ace / Vivaro



3

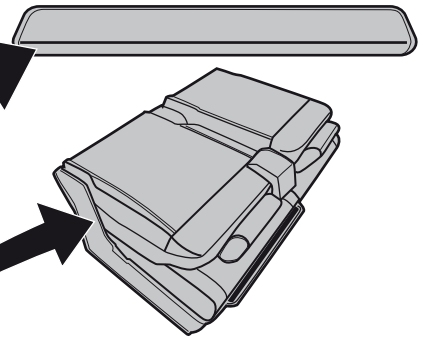
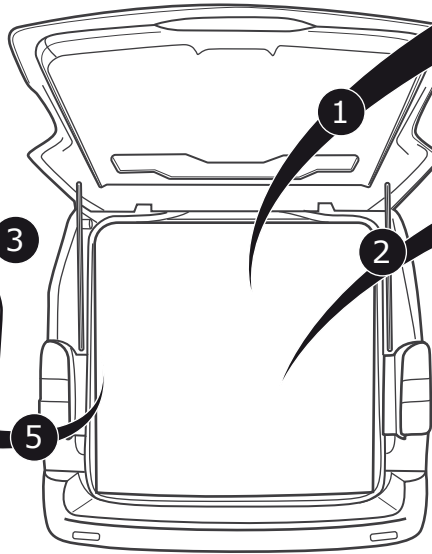
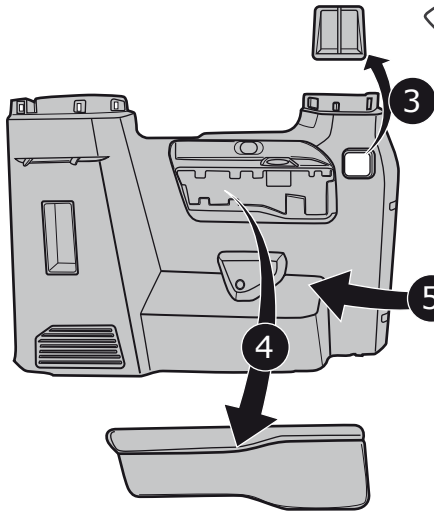
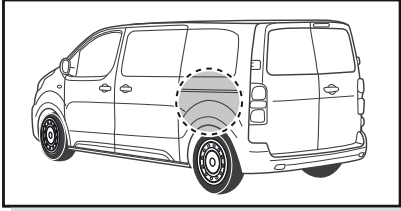


Dispatch / Expert / Pro Ace / Vivaro

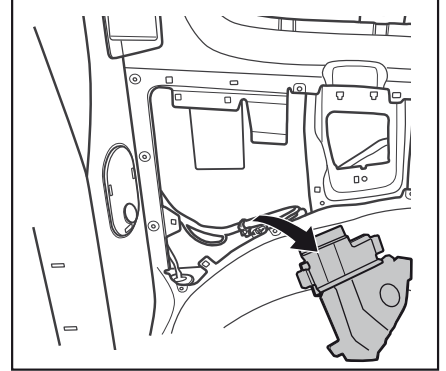


4

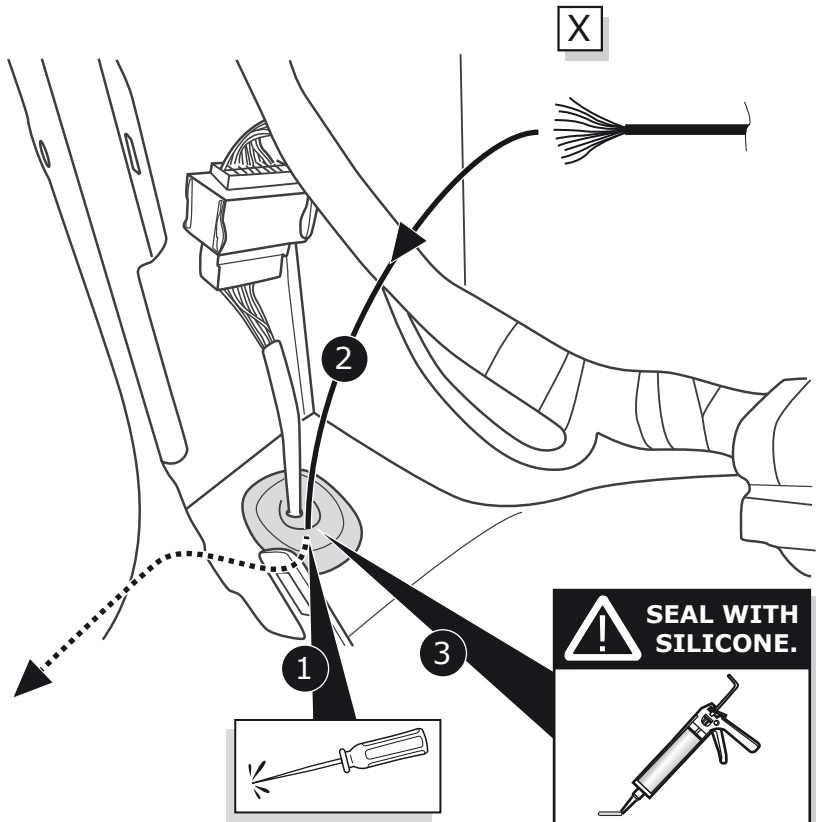
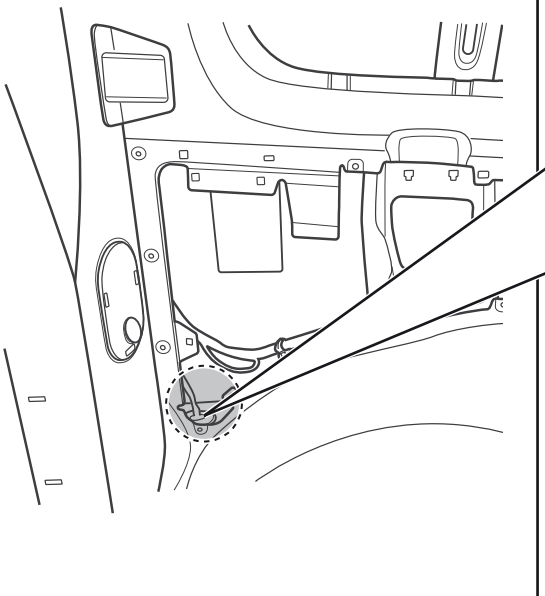
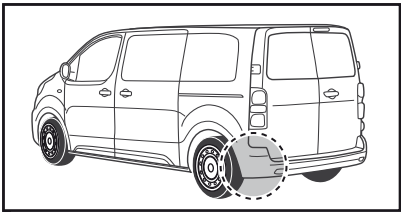
Traveller/ Proace Verso/ Space Tourer / Vivaro

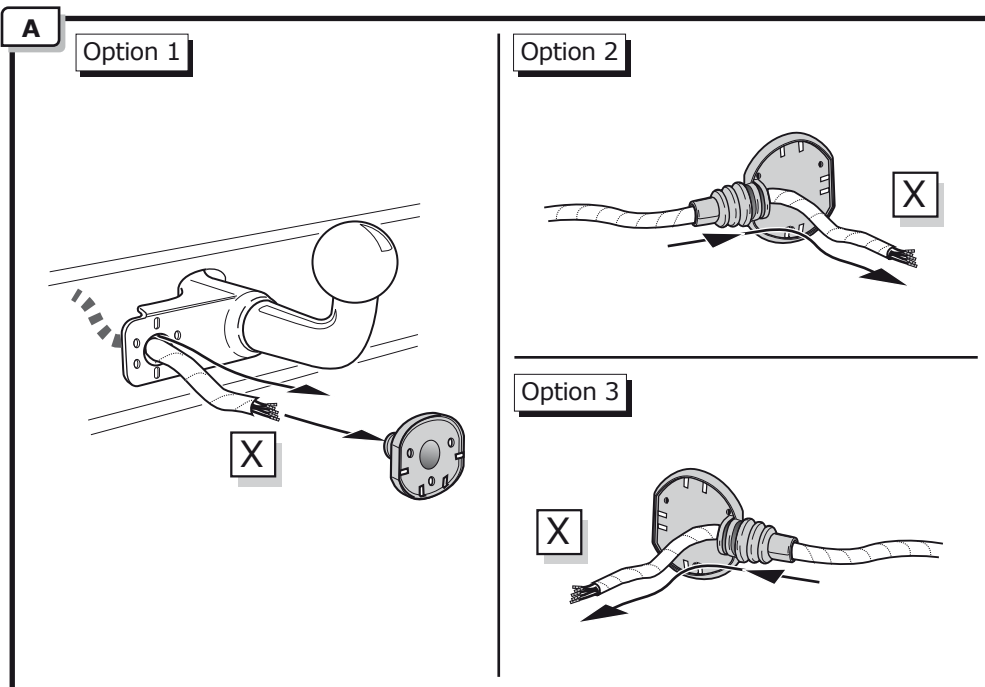


Optional



5

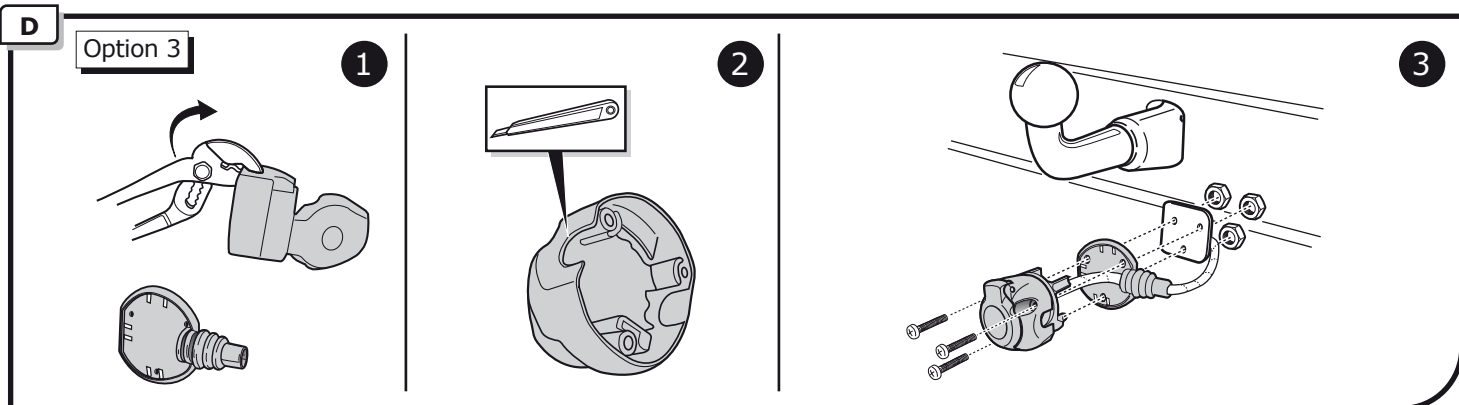
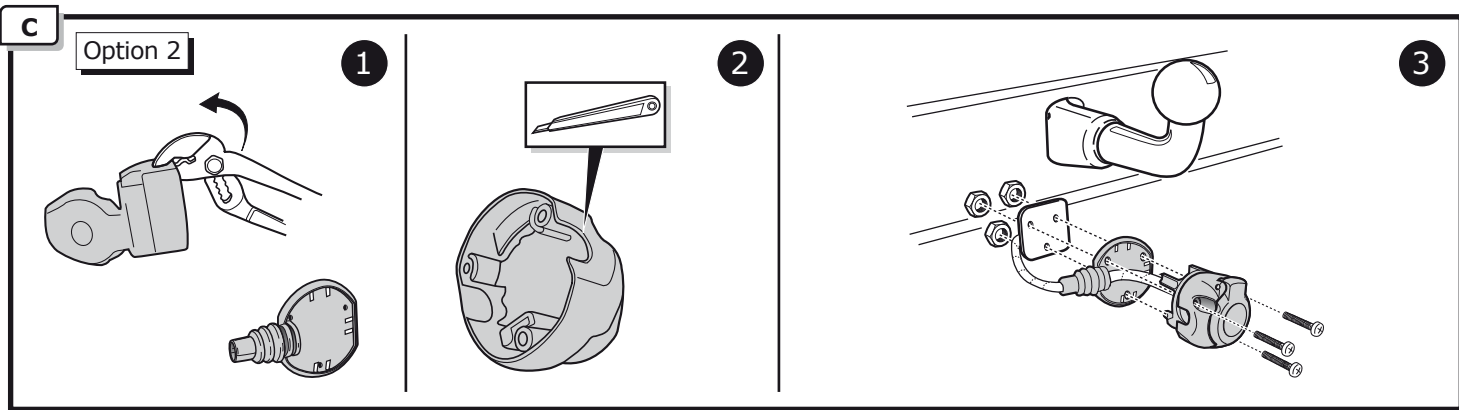
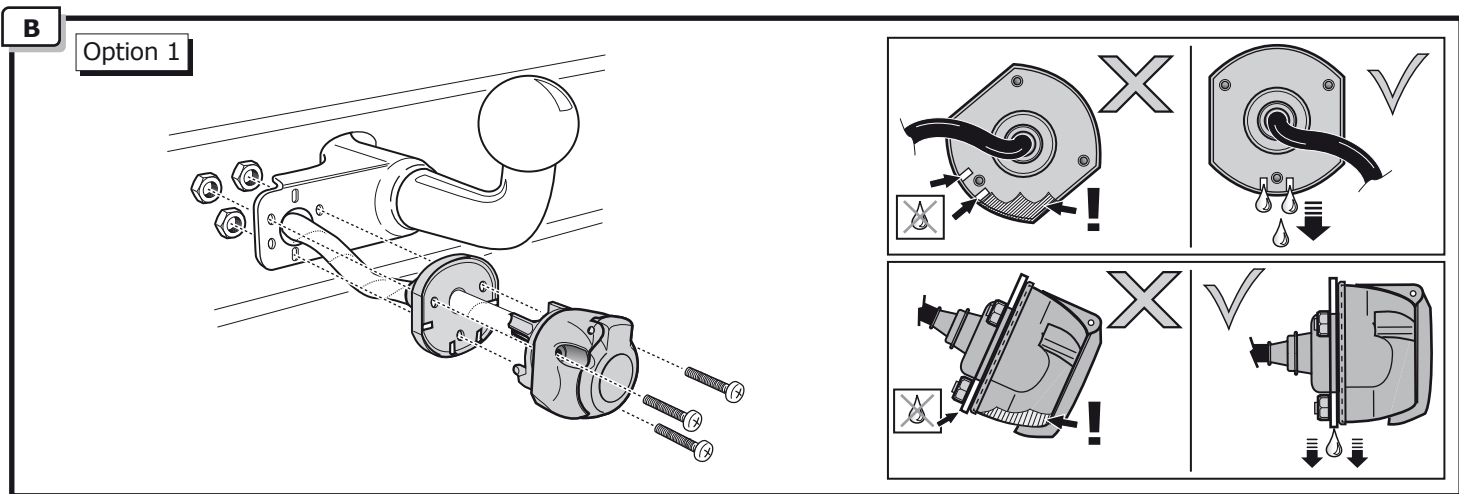




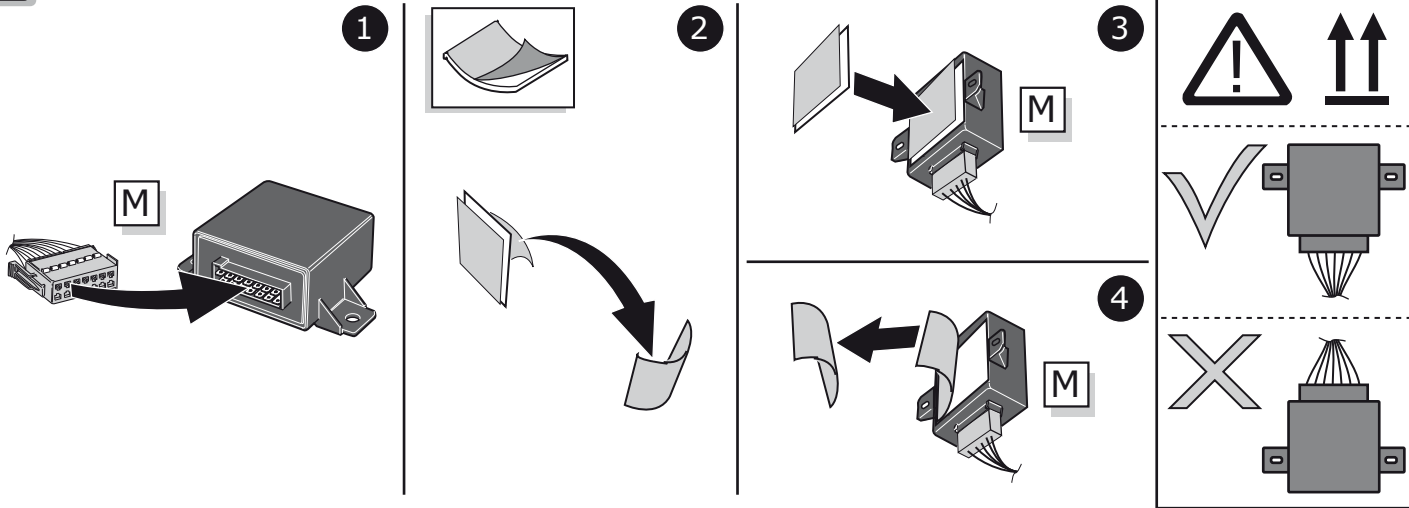
INFO

SOCKET CONNECTION

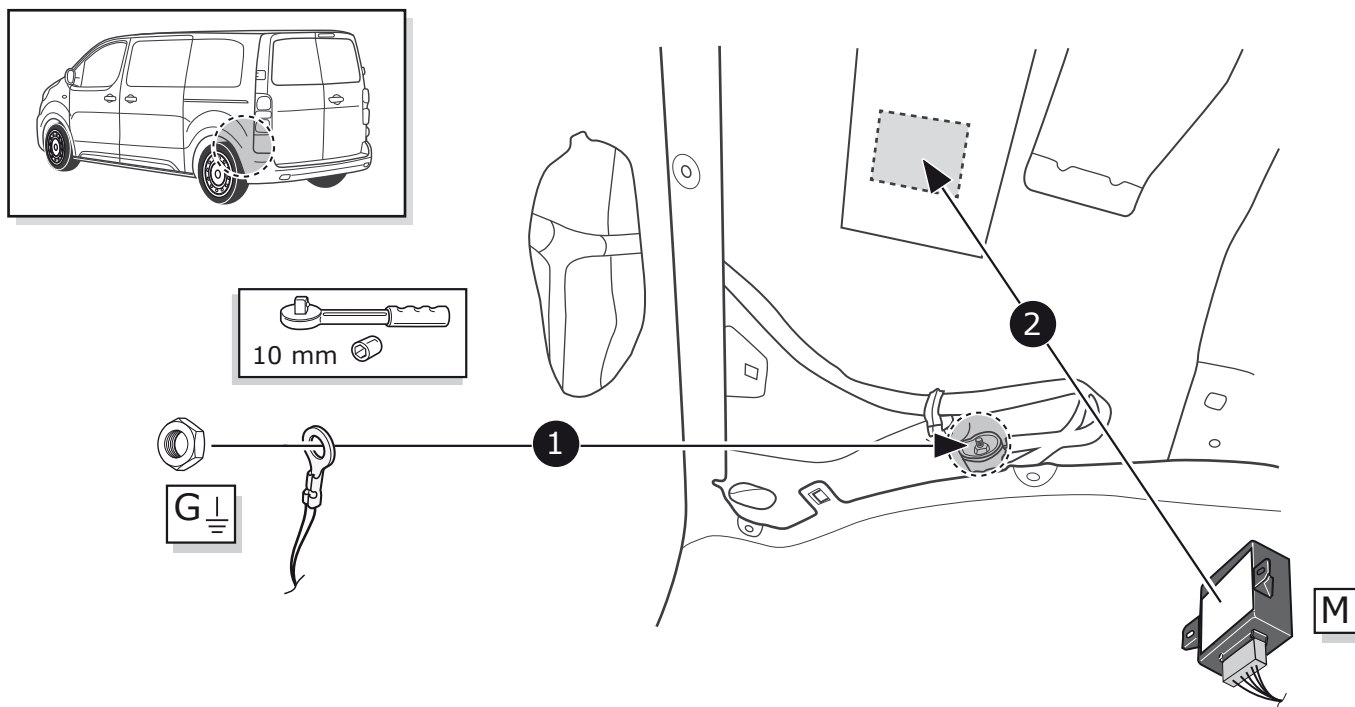
Pag. 15



6

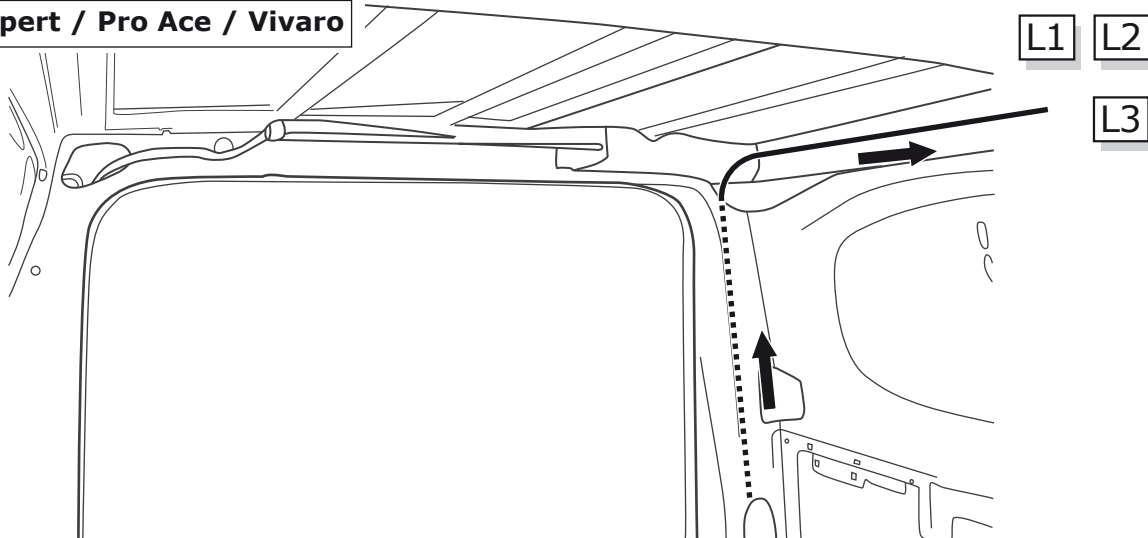


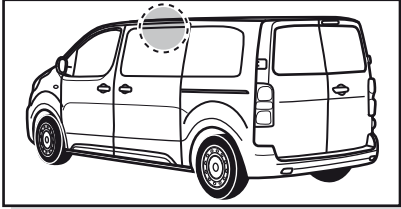
7



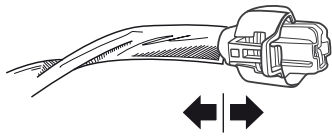
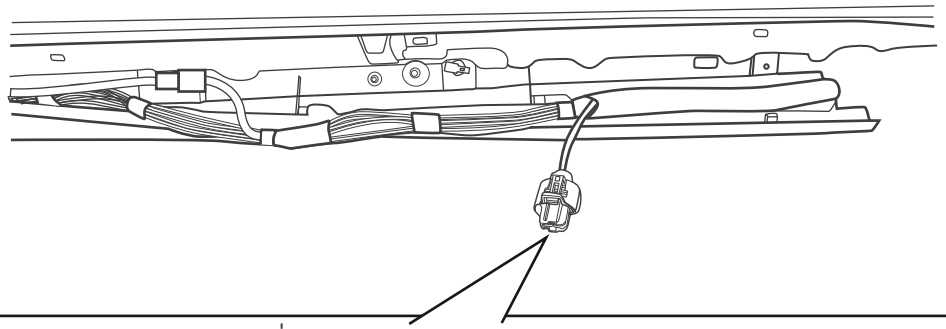
8

Dispatch / Expert / Pro Ace / Vivaro

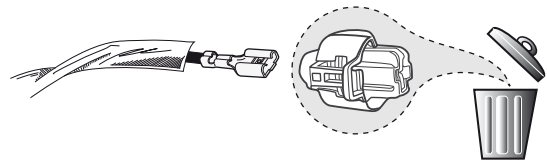




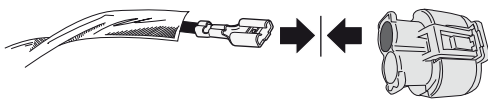
Dispatch / Expert / Pro Ace / Vivaro



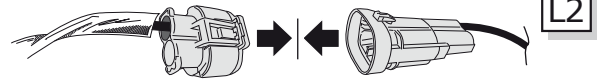
1



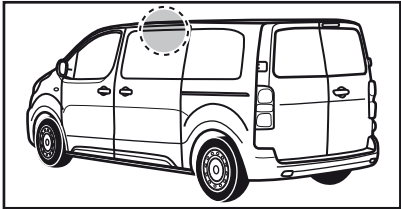
2



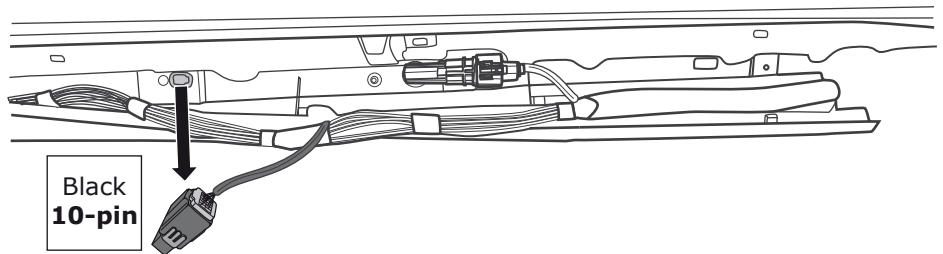
3



4



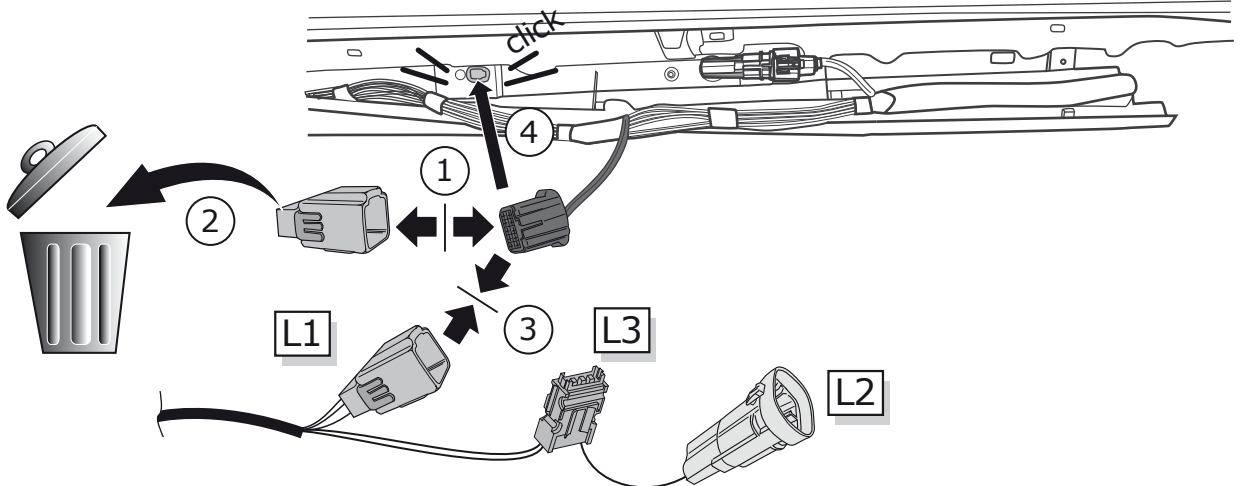
Dispatch / Expert / Pro Ace / Vivaro

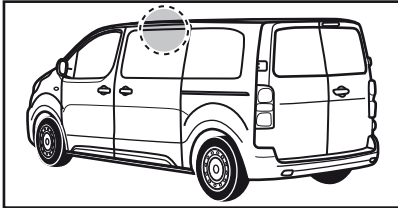


Option 1

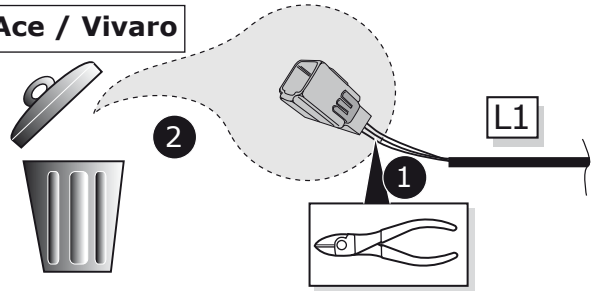
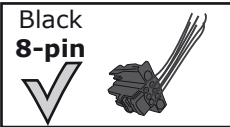
1

2

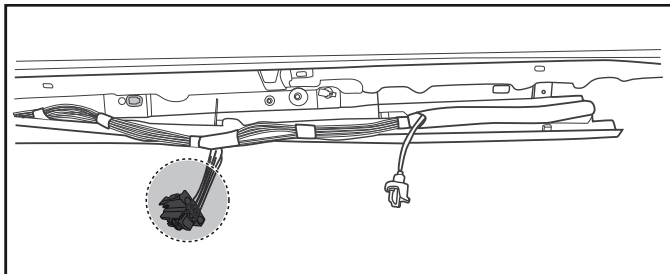




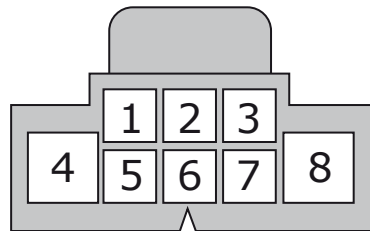
Dispatch / Expert / Pro Ace / Vivaro



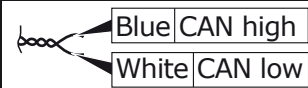
Option 2



Wire side view



CAN-Data Wire



3

1

2

3

4

5

6

7

8

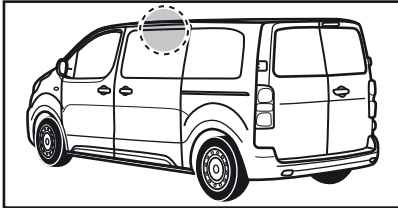
4

1

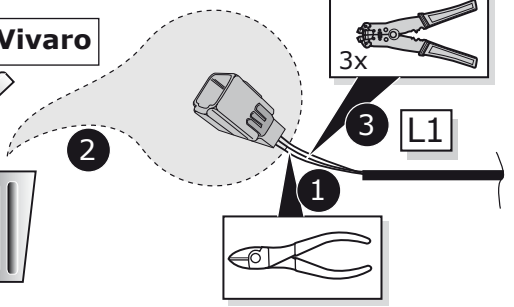
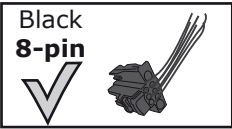
2

3

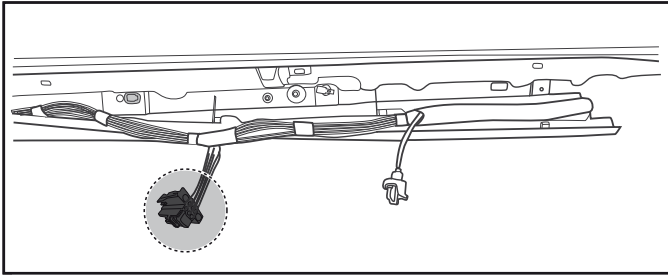
4



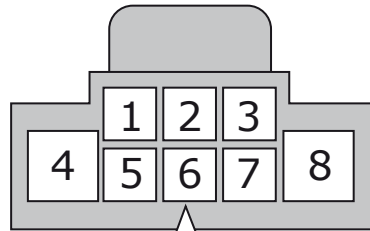
Dispatch / Expert / Pro Ace / Vivaro



Option 3



Wire side view



4

1 Blue Pos. 1

2

3

4 White Pos. 2

5

6

5

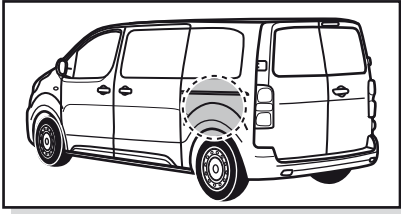
1 Pink 0,75mm² Pos. 5

54 STOP

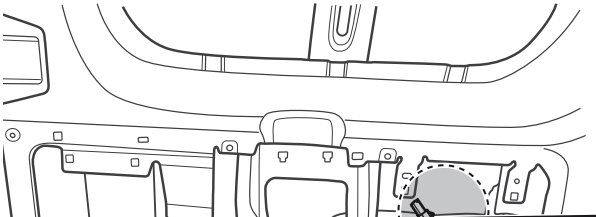
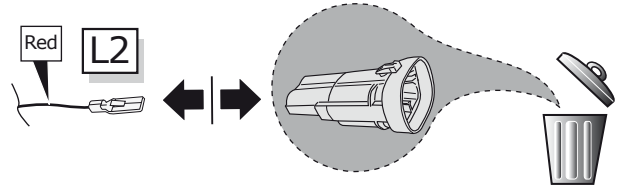
2

3

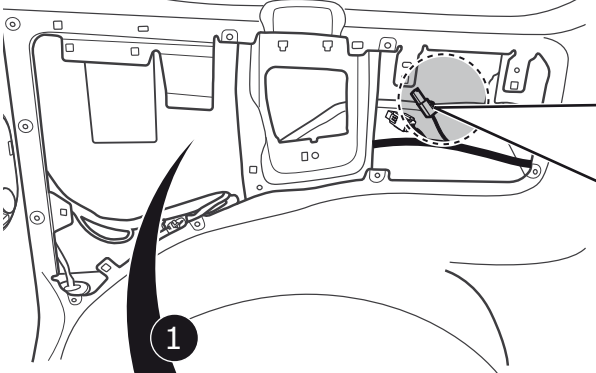
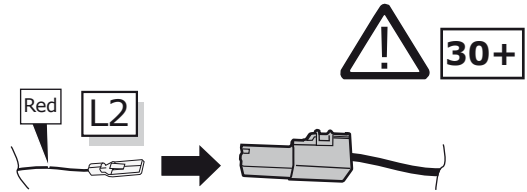
Traveller/ Proace Verso/ Space Tourer / Vivaro



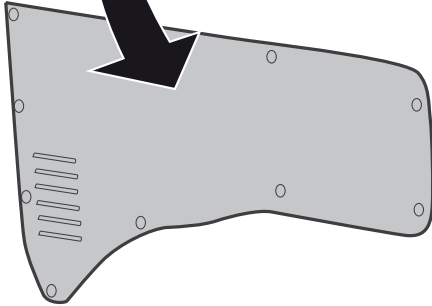
2



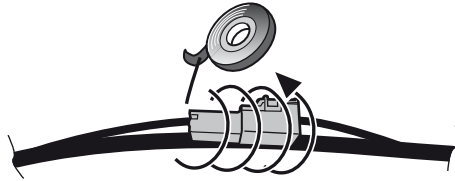
3



1



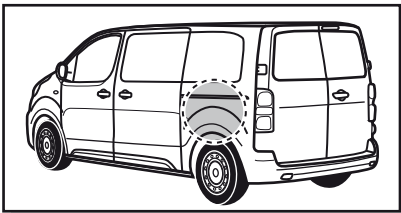
4



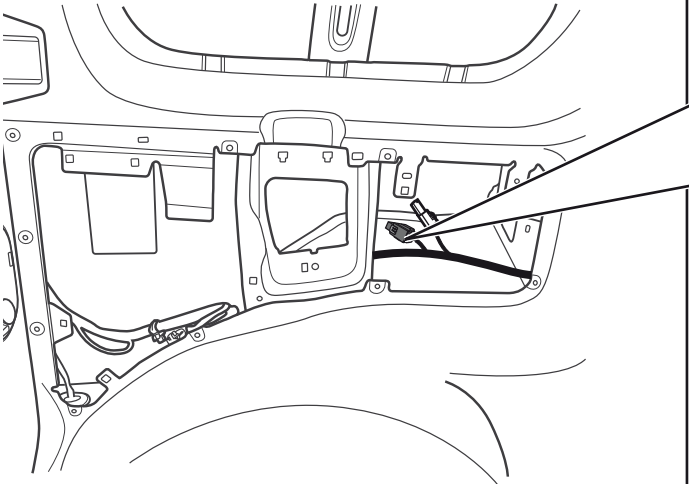
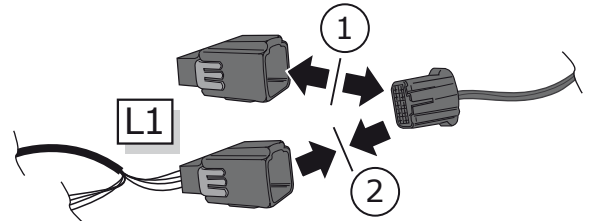
Traveller/ Proace Verso/ Space Tourer / Vivaro

Option 1

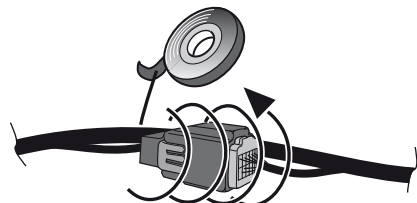
Black 10-pin

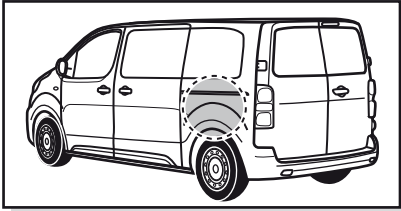


1

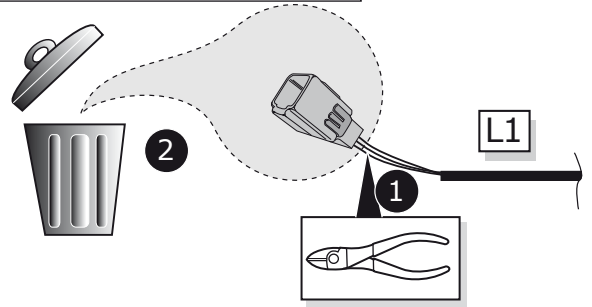
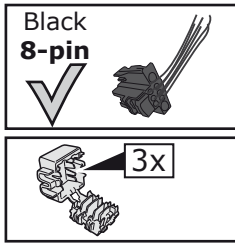


2

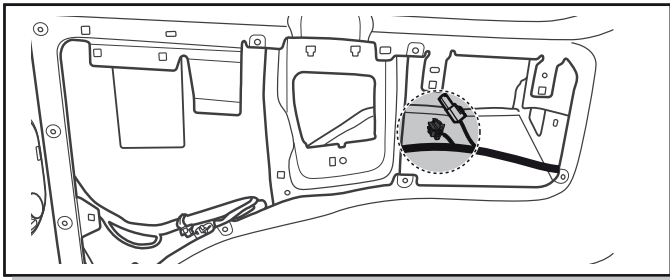




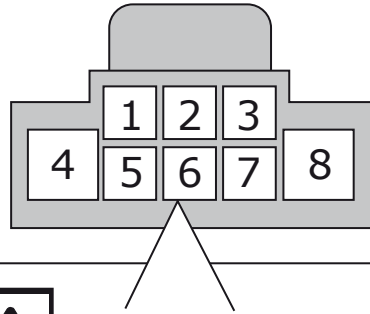
Traveller/ Proace Verso/ Space Tourer / Vivaro



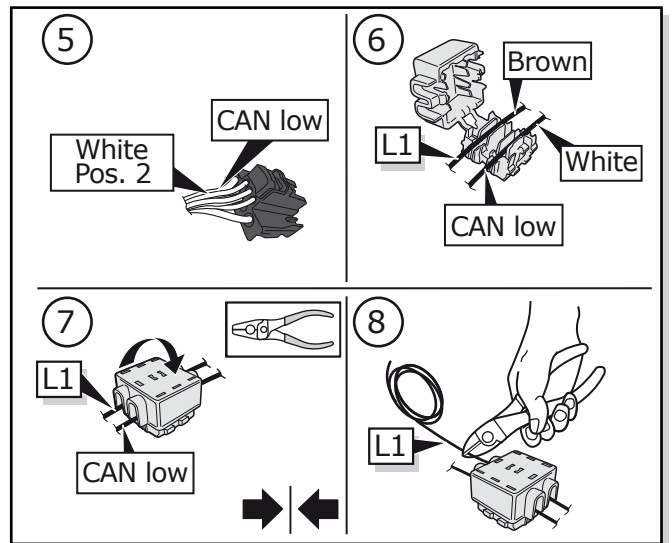
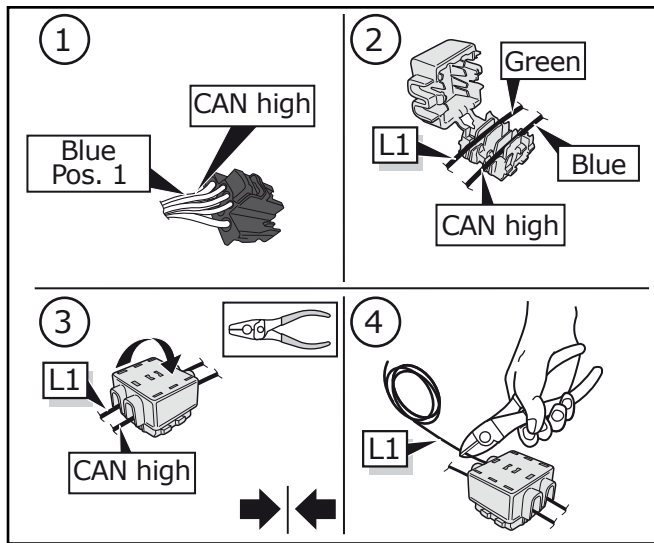
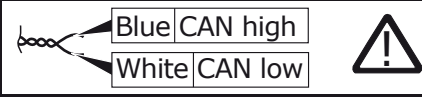
Option 2



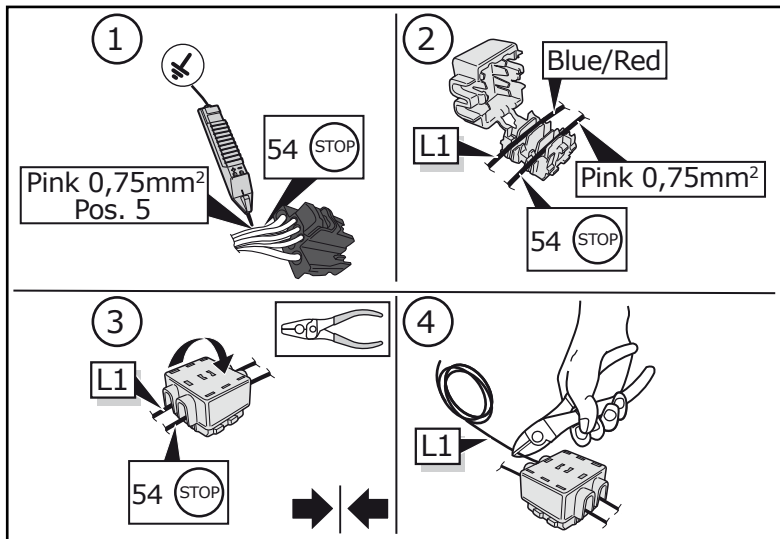
Wire side view



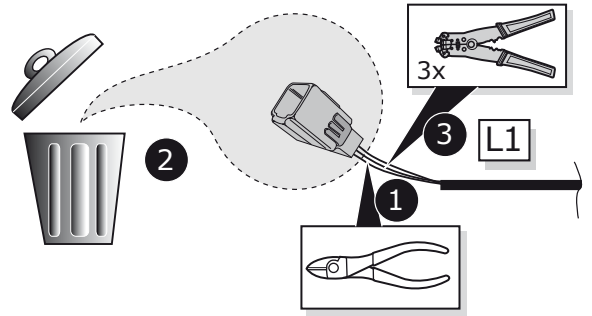
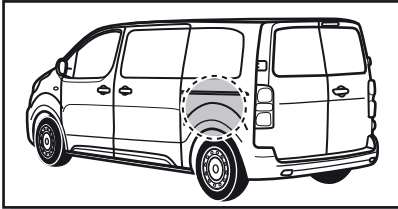
3 CAN-Data Wire



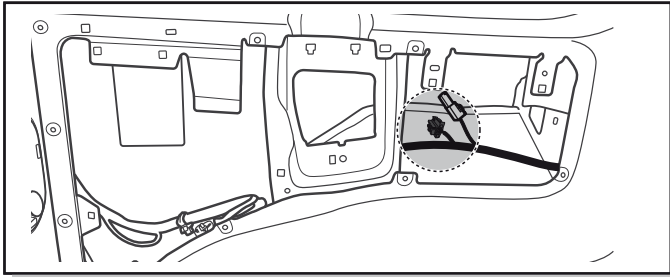
4



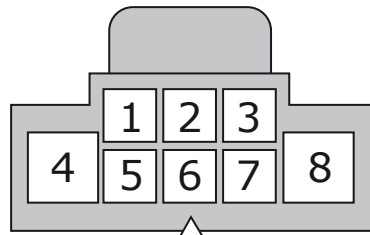
Traveller/ Proace Verso/ Space Tourer / Vivaro



Option 3



Wire side view



4

1 Blue Pos. 1

Green L1

2

3

4 White Pos. 2

Brown L1

5

6

5

1 Pink 0,75mm² Pos. 5

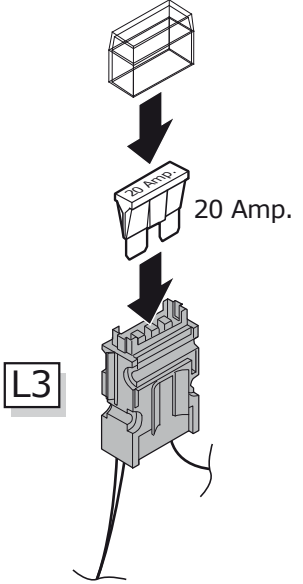
54 STOP

Blue/Red L1

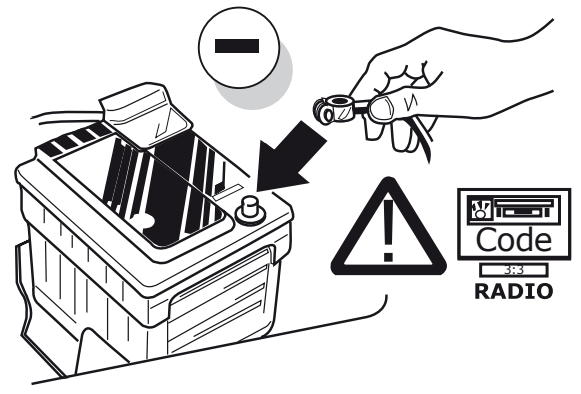
2

3

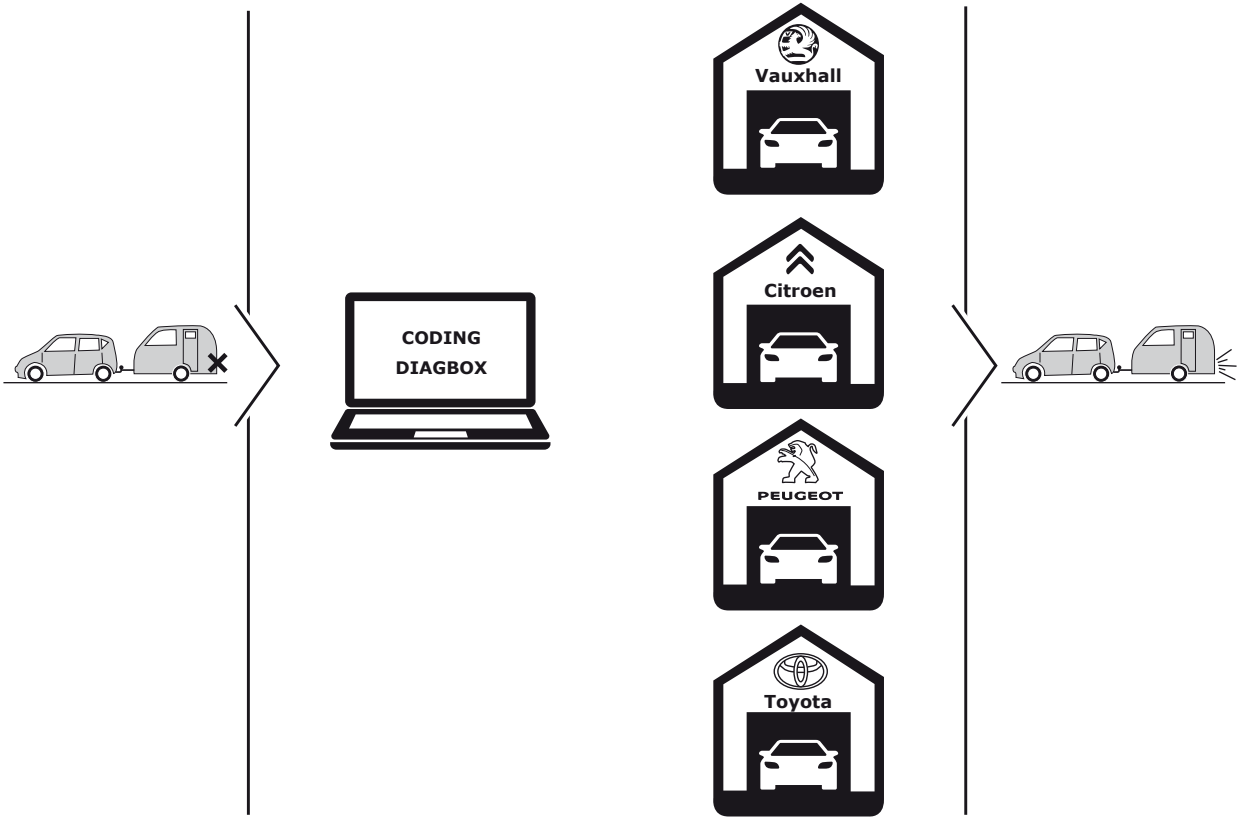
17



18



19



Vehicle MUST be coded for Trailer lights to function

20

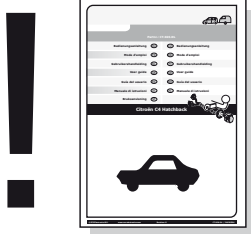
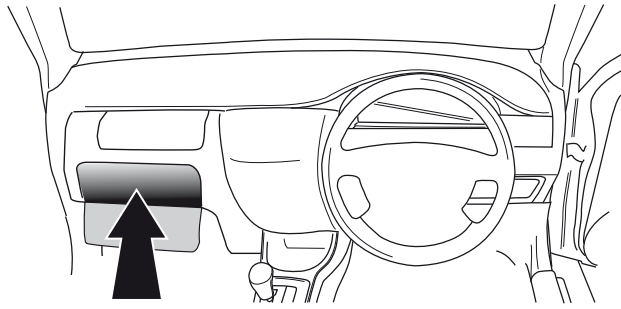


TEST ALL THE CIRCUITS WITH A TEST DEVICE WITH THE CORRECT POWER LOAD FOR EACH FUNCTION. A TEST DEVICE WITH LED'S CANNOT BE USED FOR THIS PURPOSE.

INFO

REINSTALL TRIM.

21



User guide



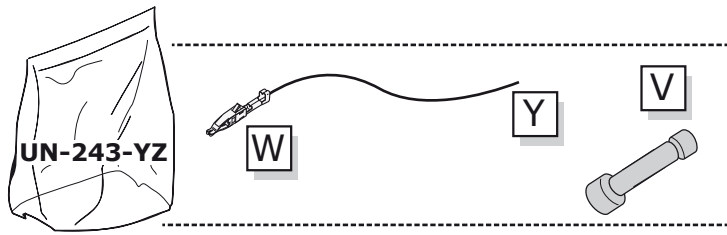
INFO

SOCKET CONNECTION

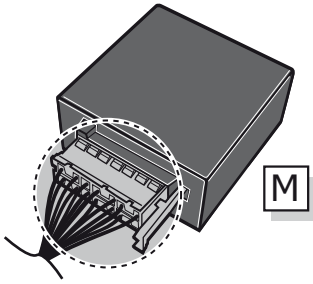
DIN/ISO 1724							
	1/L	2	3/31	4/R	5/58-R	6/54	7/58-L
Pmax	21W	2x21W		21W	52W	3x21W	52W
Colour	Yellow	Blue	White	Green	Brown	Red	Black

UN-243-YZ Reverse lamp pre-wire extension

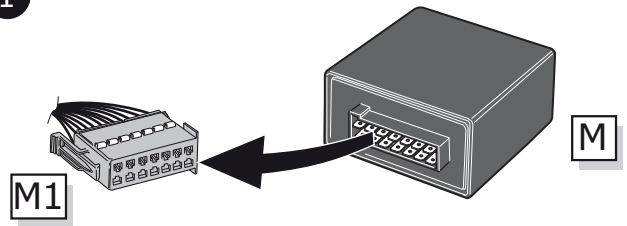
⚠ MAX = 21W



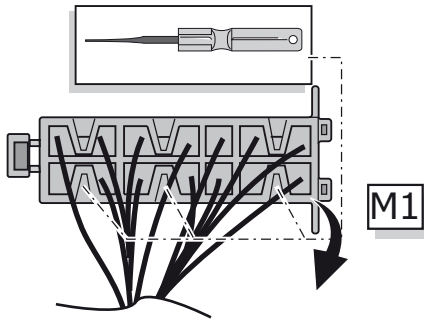
A



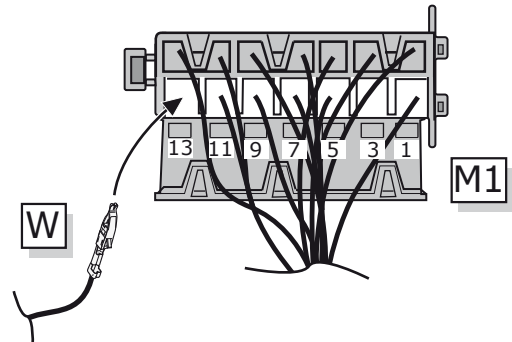
1



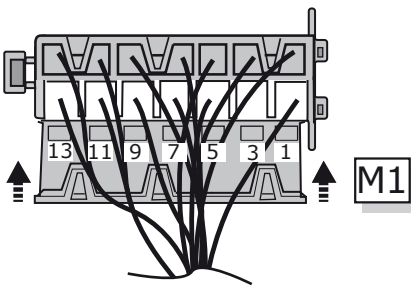
2



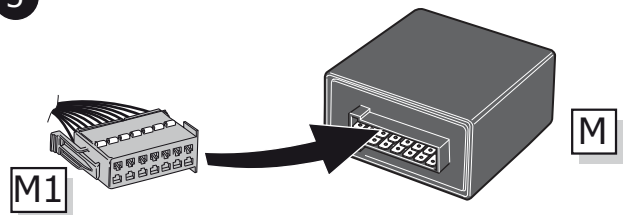
3



4



5



B

⚠ MAX = 21W

